

CONGRESS:HOUSE

Leadership & the Agenda

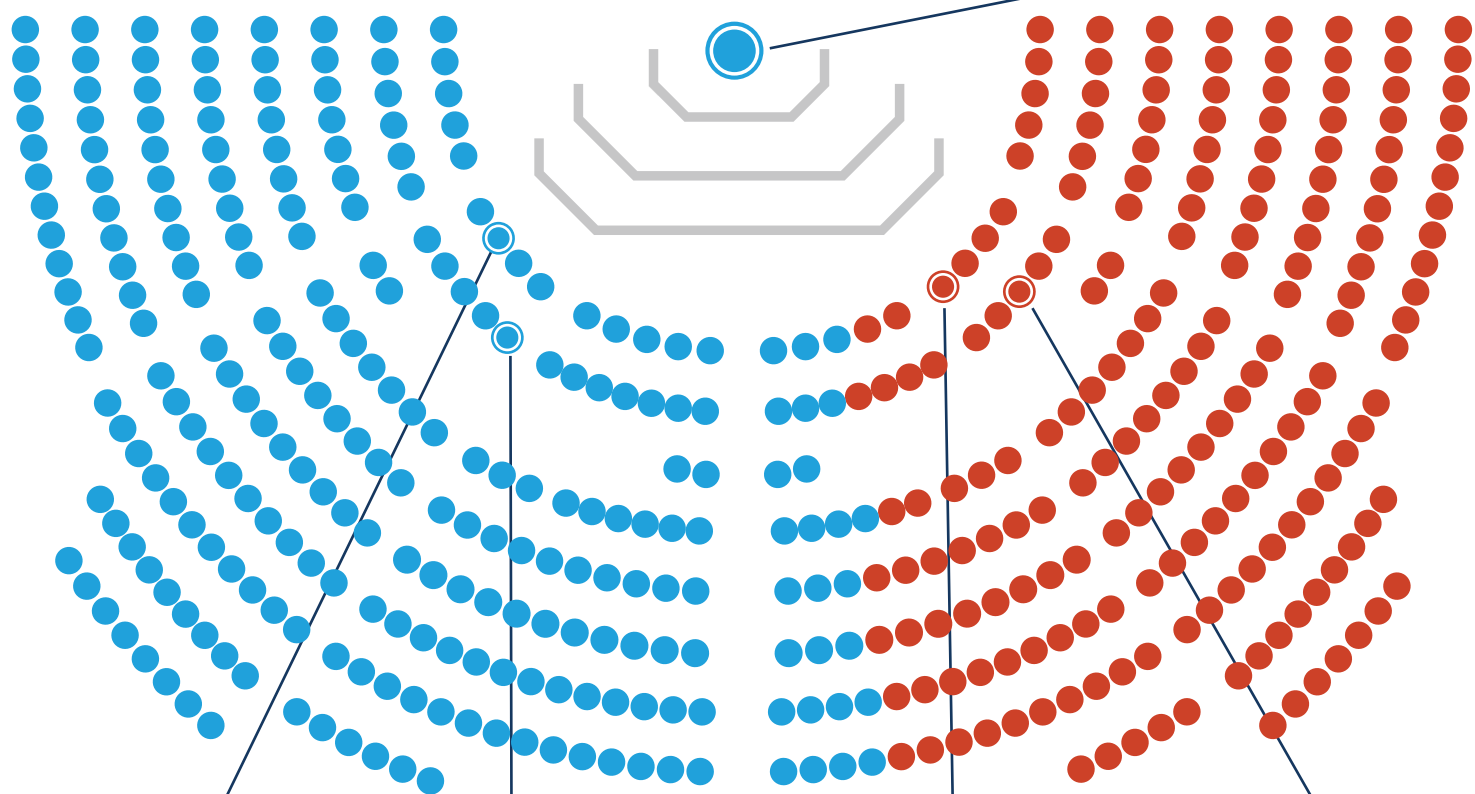
How does Congress decide which laws to work on during a session? They make a to-do list! It's called an **agenda**, and it covers a two-year session. Congressional leaders play a key role in shaping it, and each political party has a say.

- ✓ Infrastructure
- ✓ Economy
- ✓ Health
- ✓ Education
- ✓ Armed Services

HOUSE OF REPRESENTATIVES 435 MEMBERS



Speaker of the House
[CAPTAIN]
Sets agenda, schedules debates, assigns members to committees



Majority Leader
[ORGANIZER]
Helps Speaker with agenda, assigns party members to committees

Majority Whip
[PERSUADER]
Makes sure party members support the party's interests and agenda when voting

Minority Whip
[PERSUADER]
Makes sure party members support the party's interests and agenda when voting

Minority Leader
[STRATEGIST]
Contributes to agenda with party's point of view, assigns party members to committees

Without leaders to shape and direct members in moving an agenda forward, it would be difficult for Congress to get things done. Can you think of reasons why?

Majority Party = party represented with the most members in a congressional chamber
Minority Party = party represented by the fewest members in a congressional chamber



Visit [iCivics.org](https://www.icivics.org) to view our complete Legislative Branch unit.

CONGRESS: SENATE

Leadership & the Agenda

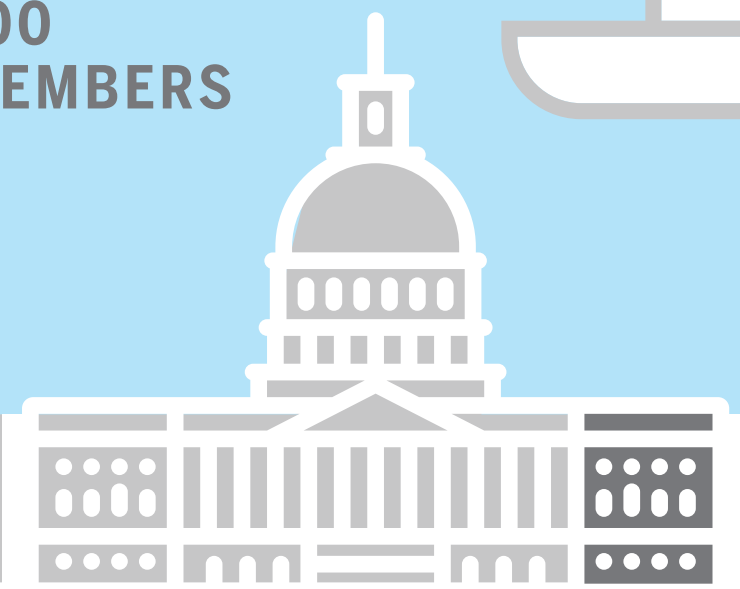
How does Congress decide which laws to work on during a session? They make a to-do list! It's called an **agenda**, and it covers a two-year session. Congressional leaders play a key role in shaping it, and each political party has a say.

- ✓ Infrastructure
- ✓ Economy
- ✓ Health
- ✓ Education
- ✓ Armed Services

SENATE 100 MEMBERS

President of the Senate*
[GUARDIAN]
THE VICE PRESIDENT, VP
Has no role in agenda setting, but can cast a tie-breaking vote when needed

President Pro Tempore*
[ALTERNATE]
Has no role in agenda setting, but does fill in for the VP when needed

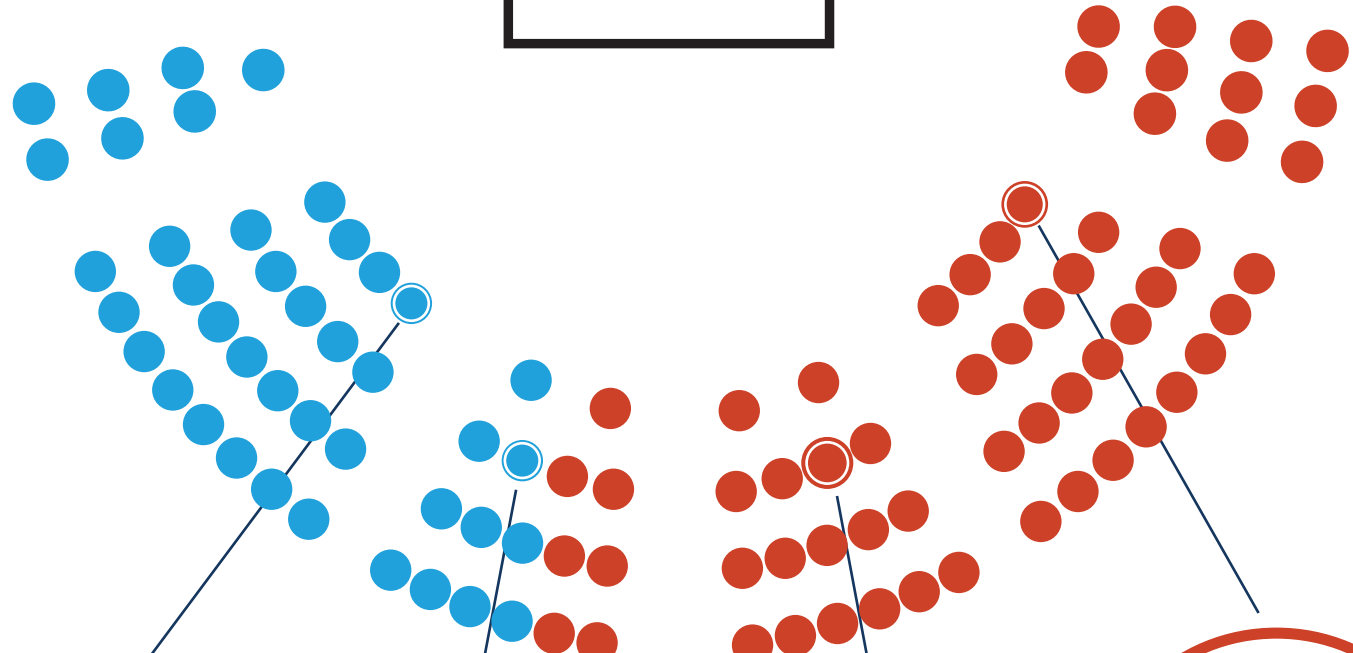


Minority Leader
[STRATEGIST]
Contributes to agenda with party's point of view, assigns party members to committees

Minority Whip
[PERSUADER]
Makes sure party members support the party's interests and agenda when voting

Majority Whip
[PERSUADER]
Makes sure party members support the party's interests and agenda when voting

Majority Leader
[CAPTAIN]
Sets agenda, schedules bills, assigns party members to committees



Without leaders to shape and direct members in moving an agenda forward, it would be difficult for Congress to get things done. Can you think of reasons why?

*Ceremonial Position

Majority Party = party represented with the most members in a congressional chamber

Minority Party = party represented by the fewest members in a congressional chamber



Visit [iCivics.org](https://www.icivics.org) to view our complete Legislative Branch unit.