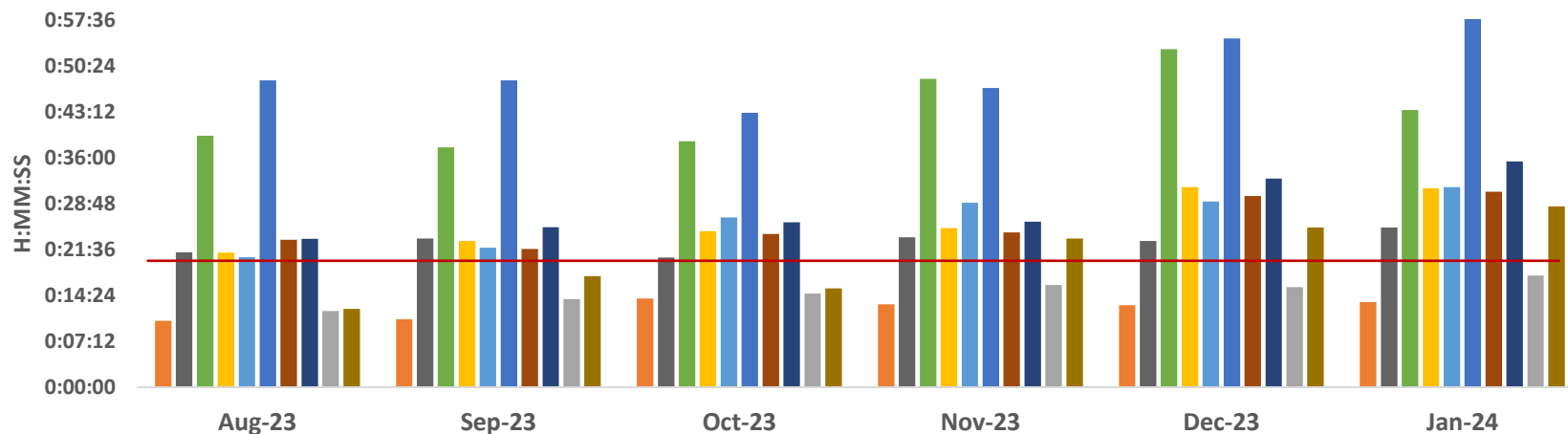


Ambulance Patient Offload Time (APOT) - 90th Percentile



	Aug-23	Sep-23	Oct-23	Nov-23	Dec-23	Jan-24
SHC	0:10:26	0:10:39	0:13:54	0:13:00	0:12:50	0:13:20
ECH	0:21:09	0:23:18	0:20:21	0:23:32	0:22:56	0:25:04
KSC	0:39:28	0:37:37	0:38:34	0:48:22	0:53:00	0:43:28
RMC	0:21:06	0:22:56	0:24:27	0:24:57	0:31:22	0:31:11
OCH	0:20:23	0:21:54	0:26:39	0:28:57	0:29:08	0:31:23
VMC	0:48:09	0:48:08	0:43:03	0:46:57	0:54:41	1:07:24
GSH	0:23:08	0:21:40	0:24:03	0:24:17	0:30:00	0:30:41
KSJ	0:23:17	0:25:05	0:25:53	0:25:57	0:32:44	0:35:25
SLH	0:11:58	0:13:48	0:14:42	0:16:02	0:15:42	0:17:31
LGH	0:12:16	0:17:24	0:15:30	0:23:18	0:25:03	0:28:21

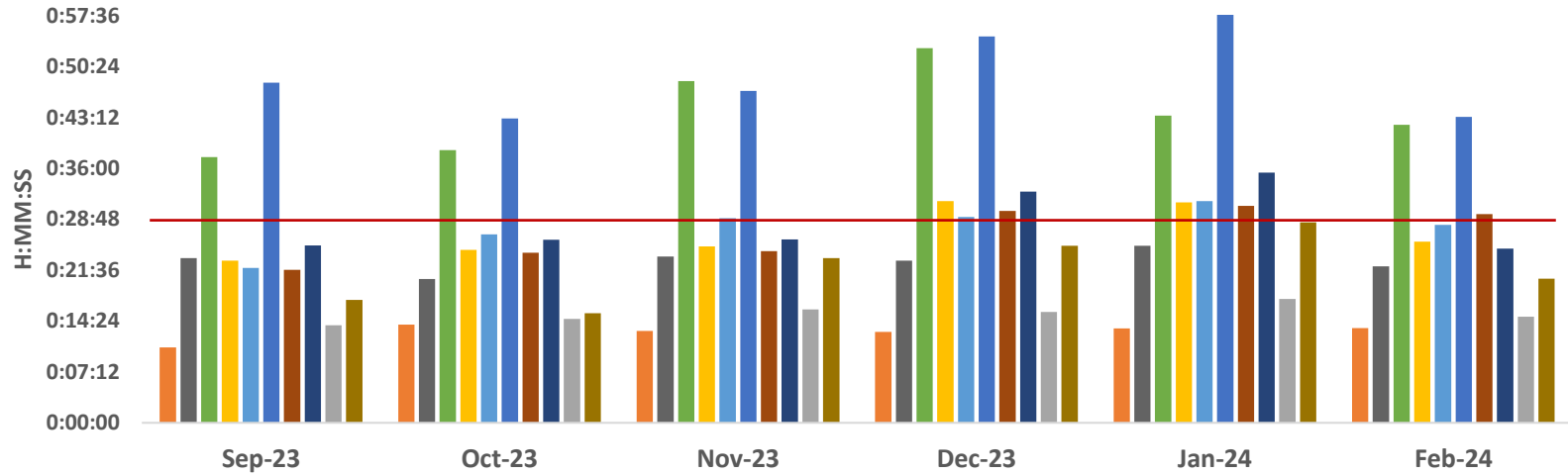
SHC ECH KSC RMC OCH VMC GSH KSJ SLH LGH

	SHC	ECH	KSC	RMC	OCH	VMC	GSH	KSJ	SLH	LGH
Aug-23	0:10:26	0:21:09	0:39:28	0:21:06	0:20:23	0:48:09	0:23:08	0:23:17	0:11:58	0:12:16
Sep-23	0:10:39	0:23:18	0:37:37	0:22:56	0:21:54	0:48:08	0:21:40	0:25:05	0:13:48	0:17:24
Oct-23	0:13:54	0:20:21	0:38:34	0:24:27	0:26:39	0:43:03	0:24:03	0:25:53	0:14:42	0:15:30
Nov-23	0:13:00	0:23:32	0:48:22	0:24:57	0:28:57	0:46:57	0:24:17	0:25:57	0:16:02	0:23:18
Dec-23	0:12:50	0:22:56	0:53:00	0:31:22	0:29:08	0:54:41	0:30:00	0:32:44	0:15:42	0:25:03
Jan-24	0:13:20	0:25:04	0:43:28	0:31:11	0:31:23	1:07:24	0:30:41	0:35:25	0:17:31	0:28:21

APOT 2 - Jan 2024

	≤ 20 minutes	21-60 minutes	61-120 minutes	121-180 minutes	>180 minutes	Total Patients
SHC	662 97.5%	17 2.5%	0 0.0%	0 0.0%	0 0.0%	679
ECH	778 85.3%	134 14.7%	0 0.0%	0 0.0%	0 0.0%	912
KSC	495 56.4%	339 38.6%	41 4.7%	3 0.3%	0 0.0%	878
RMC	1046 80.0%	223 17.1%	32 2.4%	6 0.5%	0 0.0%	1307
OCH	938 78.2%	245 20.4%	16 1.3%	1 0.1%	0 0.0%	1200
VMC	684 62.3%	287 26.1%	88 8.0%	34 3.1%	5 0.5%	1098
GSH	782 75.3%	240 23.1%	14 1.3%	1 0.1%	1 0.1%	1038
KSJ	604 71.7%	216 25.7%	21 2.5%	1 0.1%	0 0.0%	842
SLH	404 93.5%	27 6.3%	1 0.2%	0 0.0%	0 0.0%	432
LGH	178 84.8%	26 12.4%	6 2.9%	0 0.0%	0 0.0%	210
TOTAL	6571 76.4%	1754 20.4%	219 2.5%	46 0.5%	6 0.1%	8596

Ambulance Patient Offload Time (APOT) - 90th Percentile



	Sep-23	Oct-23	Nov-23	Dec-23	Jan-24	Feb-24
SHC	0:10:39	0:13:54	0:13:00	0:12:50	0:13:20	0:13:24
ECH	0:23:18	0:20:21	0:23:32	0:22:56	0:25:04	0:22:09
KSC	0:37:37	0:38:34	0:48:22	0:53:00	0:43:28	0:42:10
RMC	0:22:56	0:24:27	0:24:57	0:31:22	0:31:11	0:25:39
OCH	0:21:54	0:26:39	0:28:57	0:29:08	0:31:23	0:28:00
VMC	0:48:08	0:43:03	0:46:57	0:54:41	1:07:24	0:43:16
GSH	0:21:40	0:24:03	0:24:17	0:30:00	0:30:41	0:29:31
KSJ	0:25:05	0:25:53	0:25:57	0:32:44	0:35:25	0:24:40
SLH	0:13:48	0:14:42	0:16:02	0:15:42	0:17:31	0:15:00
LGH	0:17:24	0:15:30	0:23:18	0:25:03	0:28:21	0:20:24

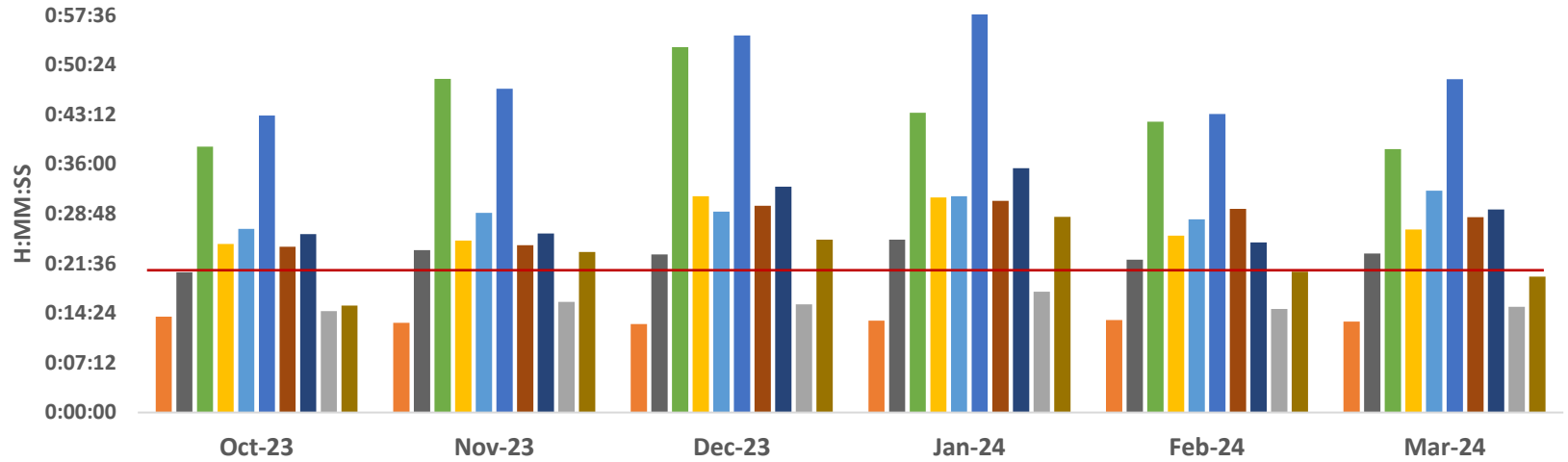
■ SHC
 ■ ECH
 ■ KSC
 ■ RMC
 ■ OCH
 ■ VMC
 ■ GSH
 ■ KSJ
 ■ SLH
 ■ LGH

	SHC	ECH	KSC	RMC	OCH	VMC	GSH	KSJ	SLH	LGH
Sep-23	0:10:39	0:23:18	0:37:37	0:22:56	0:21:54	0:48:08	0:21:40	0:25:05	0:13:48	0:17:24
Oct-23	0:13:54	0:20:21	0:38:34	0:24:27	0:26:39	0:43:03	0:24:03	0:25:53	0:14:42	0:15:30
Nov-23	0:13:00	0:23:32	0:48:22	0:24:57	0:28:57	0:46:57	0:24:17	0:25:57	0:16:02	0:23:18
Dec-23	0:12:50	0:22:56	0:53:00	0:31:22	0:29:08	0:54:41	0:30:00	0:32:44	0:15:42	0:25:03
Jan-24	0:13:20	0:25:04	0:43:28	0:31:11	0:31:23	1:07:24	0:30:41	0:35:25	0:17:31	0:28:21
Feb-24	0:13:24	0:22:09	0:42:10	0:25:39	0:28:00	0:43:16	0:29:31	0:24:40	0:15:00	0:20:24

APOT 2 - Feb 2024

	≤ 20 minutes	21-60 minutes	61-120 minutes	121-180 minutes	>180 minutes	Total Patients
SHC	609 98.1%	11 1.8%	0 0.0%	1 0.2%	0 0.0%	621
ECH	761 88.8%	92 10.7%	4 0.5%	0 0.0%	0 0.0%	857
KSC	390 56.1%	279 40.1%	26 3.7%	0 0.0%	0 0.0%	695
RMC	992 82.9%	196 16.4%	9 0.8%	0 0.0%	0 0.0%	1197
OCH	877 80.2%	212 19.4%	4 0.4%	1 0.1%	0 0.0%	1094
VMC	734 68.8%	266 24.9%	62 5.8%	5 0.5%	0 0.0%	1067
GSH	737 77.5%	210 22.1%	4 0.4%	0 0.0%	0 0.0%	951
KSJ	681 83.9%	129 15.9%	2 0.2%	0 0.0%	0 0.0%	812
SLH	404 95.7%	18 4.3%	0 0.0%	0 0.0%	0 0.0%	422
LGH	160 90.4%	15 8.5%	2 1.1%	0 0.0%	0 0.0%	177
TOTAL	6345 80.4%	1428 18.1%	113 1.4%	7 0.1%	0 0.0%	7893

Ambulance Patient Offload Time (APOT) - 90th Percentile



	Oct-23	Nov-23	Dec-23	Jan-24	Feb-24	Mar-24
SHC	0:13:54	0:13:00	0:12:50	0:13:20	0:13:24	0:13:10
ECH	0:20:21	0:23:32	0:22:56	0:25:04	0:22:09	0:23:03
KSC	0:38:34	0:48:22	0:53:00	0:43:28	0:42:10	0:38:12
RMC	0:24:27	0:24:57	0:31:22	0:31:11	0:25:39	0:26:33
OCH	0:26:39	0:28:57	0:29:08	0:31:23	0:28:00	0:32:10
VMC	0:43:03	0:46:57	0:54:41	1:07:24	0:43:16	0:48:19
GSH	0:24:03	0:24:17	0:30:00	0:30:41	0:29:31	0:28:20
KSJ	0:25:53	0:25:57	0:32:44	0:35:25	0:24:40	0:29:27
SLH	0:14:42	0:16:02	0:15:42	0:17:31	0:15:00	0:15:19
LGH	0:15:30	0:23:18	0:25:03	0:28:21	0:20:24	0:19:42

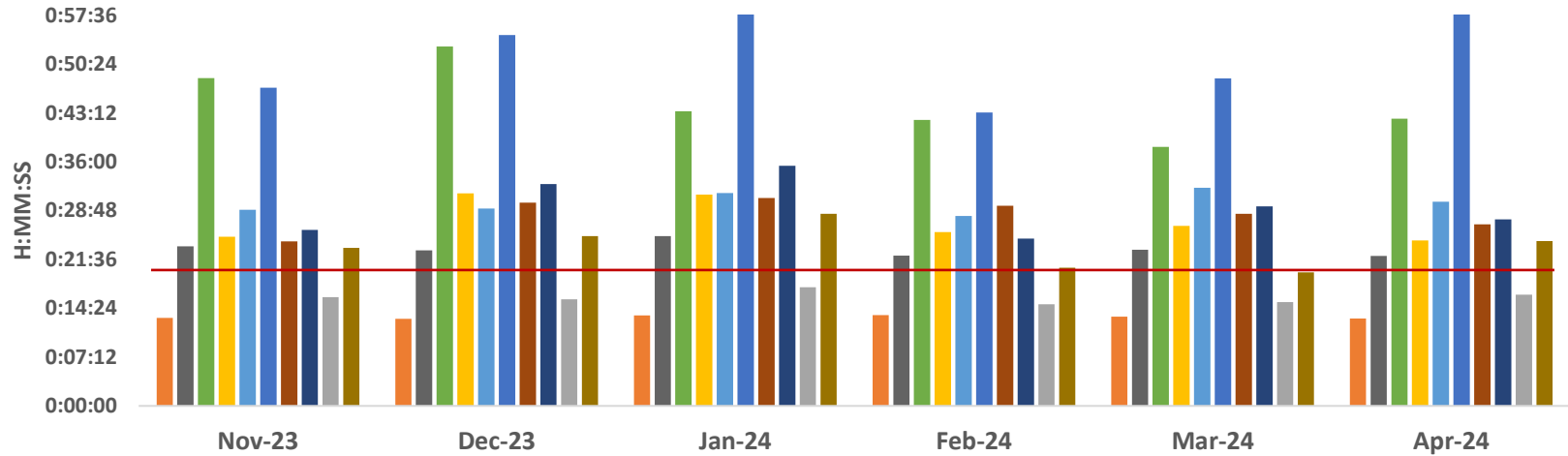
SHC ECH KSC RMC OCH VMC GSH KSJ SLH LGH

	SHC	ECH	KSC	RMC	OCH	VMC	GSH	KSJ	SLH	LGH
Oct-23	0:13:54	0:20:21	0:38:34	0:24:27	0:26:39	0:43:03	0:24:03	0:25:53	0:14:42	0:15:30
Nov-23	0:13:00	0:23:32	0:48:22	0:24:57	0:28:57	0:46:57	0:24:17	0:25:57	0:16:02	0:23:18
Dec-23	0:12:50	0:22:56	0:53:00	0:31:22	0:29:08	0:54:41	0:30:00	0:32:44	0:15:42	0:25:03
Jan-24	0:13:20	0:25:04	0:43:28	0:31:11	0:31:23	1:07:24	0:30:41	0:35:25	0:17:31	0:28:21
Feb-24	0:13:24	0:22:09	0:42:10	0:25:39	0:28:00	0:43:16	0:29:31	0:24:40	0:15:00	0:20:24
Mar-24	0:13:10	0:23:03	0:38:12	0:26:33	0:32:10	0:48:19	0:28:20	0:29:27	0:15:19	0:19:42

APOT 2 - Mar 2024

	≤ 20 minutes	21-60 minutes	61-120 minutes	121-180 minutes	>180 minutes	Total Patients
SHC	659 96.9%	19 2.8%	2 0.3%	0 0.0%	0 0.0%	680
ECH	799 86.2%	126 13.6%	2 0.2%	0 0.0%	0 0.0%	927
KSC	471 57.9%	321 39.5%	21 2.6%	0 0.0%	0 0.0%	813
RMC	960 83.6%	174 15.1%	15 1.3%	0 0.0%	0 0.0%	1149
OCH	955 75.7%	285 22.6%	21 1.7%	0 0.0%	0 0.0%	1261
VMC	729 65.6%	302 27.2%	68 6.1%	12 1.1%	1 0.1%	1112
GSH	810 80.9%	181 18.1%	10 1.0%	0 0.0%	0 0.0%	1001
KSJ	611 78.4%	163 20.9%	5 0.6%	0 0.0%	0 0.0%	779
SLH	416 95.4%	20 4.6%	0 0.0%	0 0.0%	0 0.0%	436
LGH	154 91.7%	13 7.7%	1 0.6%	0 0.0%	0 0.0%	168
TOTAL	6564 78.8%	1604 19.3%	145 1.7%	12 0.1%	1 0.0%	8326

Ambulance Patient Offload Time (APOT) - 90th Percentile



	Nov-23	Dec-23	Jan-24	Feb-24	Mar-24	Apr-24
SHC	0:13:00	0:12:50	0:13:20	0:13:24	0:13:10	0:12:53
ECH	0:23:32	0:22:56	0:25:04	0:22:09	0:23:03	0:22:07
KSC	0:48:22	0:53:00	0:43:28	0:42:10	0:38:12	0:42:22
RMC	0:24:57	0:31:22	0:31:11	0:25:39	0:26:33	0:24:23
OCH	0:28:57	0:29:08	0:31:23	0:28:00	0:32:10	0:30:06
VMC	0:46:57	0:54:41	1:07:24	0:43:16	0:48:19	0:58:57
GSH	0:24:17	0:30:00	0:30:41	0:29:31	0:28:20	0:26:47
KSJ	0:25:57	0:32:44	0:35:25	0:24:40	0:29:27	0:27:31
SLH	0:16:02	0:15:42	0:17:31	0:15:00	0:15:19	0:16:24
LGH	0:23:18	0:25:03	0:28:21	0:20:24	0:19:42	0:24:19

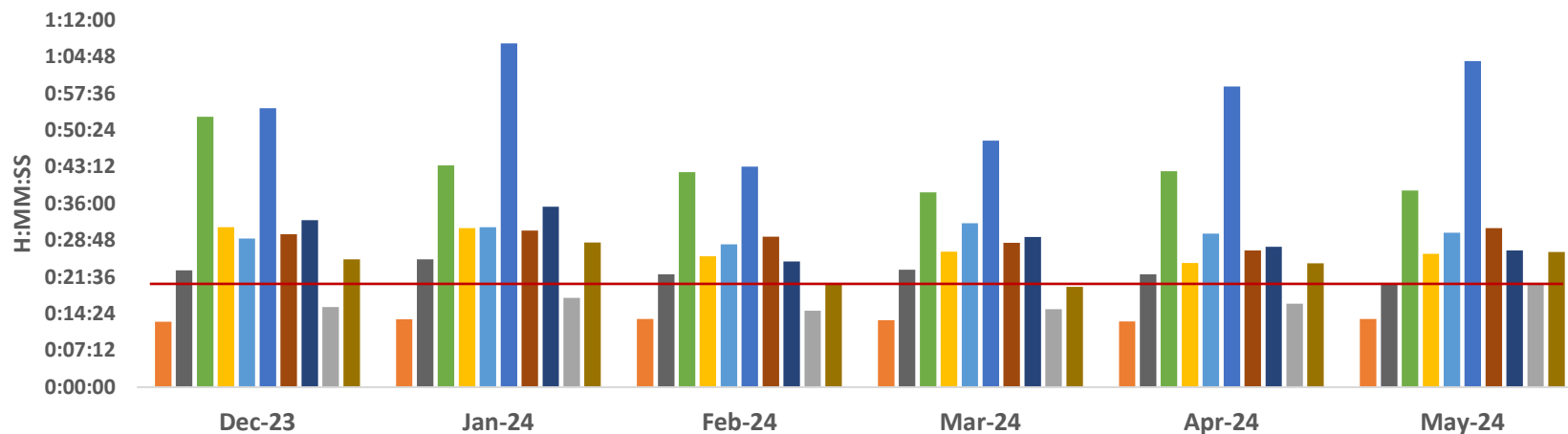
SHC ECH KSC RMC OCH VMC GSH KSJ SLH LGH

	SHC	ECH	KSC	RMC	OCH	VMC	GSH	KSJ	SLH	LGH
Nov-23	0:13:00	0:23:32	0:48:22	0:24:57	0:28:57	0:46:57	0:24:17	0:25:57	0:16:02	0:23:18
Dec-23	0:12:50	0:22:56	0:53:00	0:31:22	0:29:08	0:54:41	0:30:00	0:32:44	0:15:42	0:25:03
Jan-24	0:13:20	0:25:04	0:43:28	0:31:11	0:31:23	1:07:24	0:30:41	0:35:25	0:17:31	0:28:21
Feb-24	0:13:24	0:22:09	0:42:10	0:25:39	0:28:00	0:43:16	0:29:31	0:24:40	0:15:00	0:20:24
Mar-24	0:13:10	0:23:03	0:38:12	0:26:33	0:32:10	0:48:19	0:28:20	0:29:27	0:15:19	0:19:42
Apr-24	0:12:53	0:22:07	0:42:22	0:24:23	0:30:06	0:58:57	0:26:47	0:27:31	0:16:24	0:24:19

APOT 2 - Apr 2024

	≤ 20 minutes	21-60 minutes	61-120 minutes	121-180 minutes	>180 minutes	Total Patients
SHC	648 97.3%	18 2.7%	0 0.0%	0 0.0%	0 0.0%	666
ECH	761 88.4%	100 11.6%	0 0.0%	0 0.0%	0 0.0%	861
KSC	437 55.4%	330 41.8%	22 2.8%	0 0.0%	0 0.0%	789
RMC	1007 85.8%	160 13.6%	7 0.6%	0 0.0%	0 0.0%	1174
OCH	920 79.6%	229 19.8%	7 0.6%	0 0.0%	0 0.0%	1156
VMC	726 64.6%	293 26.1%	75 6.7%	22 2.0%	7 0.6%	1123
GSH	803 81.4%	184 18.6%	0 0.0%	0 0.0%	0 0.0%	987
KSJ	689 80.0%	171 19.9%	1 0.1%	0 0.0%	0 0.0%	861
SLH	401 94.1%	25 5.9%	0 0.0%	0 0.0%	0 0.0%	426
LGH	138 89.0%	14 9.0%	3 1.9%	0 0.0%	0 0.0%	155
TOTAL	6530 79.7%	1524 18.6%	115 1.4%	22 0.3%	7 0.1%	8198

Ambulance Patient Offload Time (APOT) - 90th Percentile



	Dec-23	Jan-24	Feb-24	Mar-24	Apr-24	May-24
SHC	0:12:50	0:13:20	0:13:24	0:13:10	0:12:53	0:13:21
ECH	0:22:56	0:25:04	0:22:09	0:23:03	0:22:07	0:20:13
KSC	0:53:00	0:43:28	0:42:10	0:38:12	0:42:22	0:38:34
RMC	0:31:22	0:31:11	0:25:39	0:26:33	0:24:23	0:26:10
OCH	0:29:08	0:31:23	0:28:00	0:32:10	0:30:06	0:30:17
VMC	0:54:41	1:07:24	0:43:16	0:48:19	0:58:57	1:03:56
GSH	0:30:00	0:30:41	0:29:31	0:28:20	0:26:47	0:31:13
KSJ	0:32:44	0:35:25	0:24:40	0:29:27	0:27:31	0:26:50
SLH	0:15:42	0:17:31	0:15:00	0:15:19	0:16:24	0:20:11
LGH	0:25:03	0:28:21	0:20:24	0:19:42	0:24:19	0:26:31

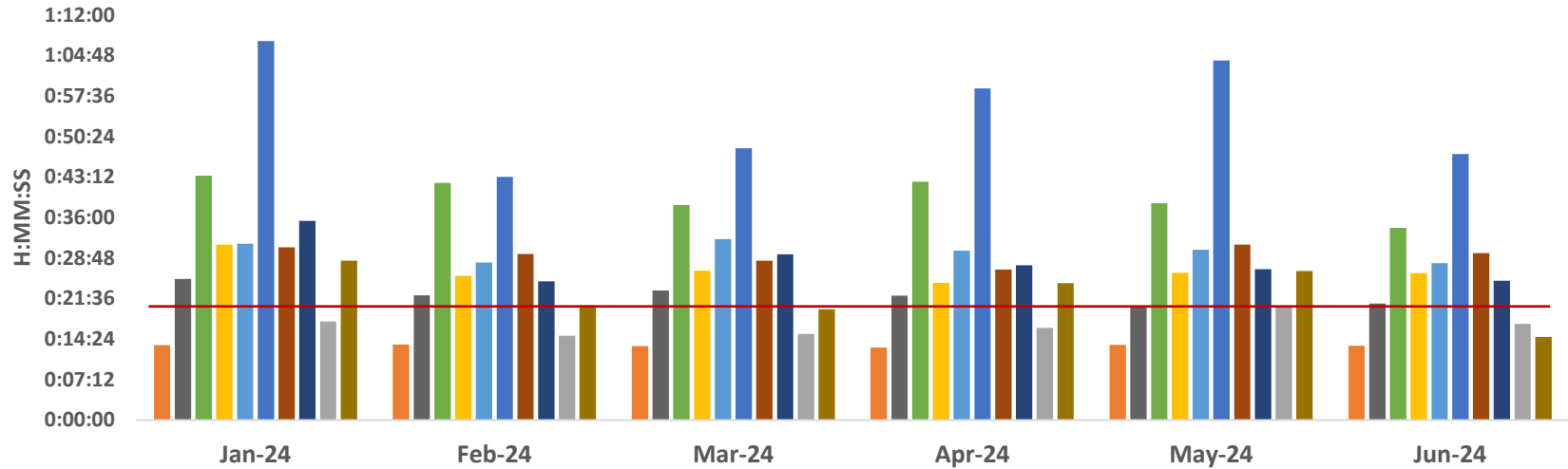
SHC ECH KSC RMC OCH VMC GSH KSJ SLH LGH

	SHC	ECH	KSC	RMC	OCH	VMC	GSH	KSJ	SLH	LGH
Dec-23	0:12:50	0:22:56	0:53:00	0:31:22	0:29:08	0:54:41	0:30:00	0:32:44	0:15:42	0:25:03
Jan-24	0:13:20	0:25:04	0:43:28	0:31:11	0:31:23	1:07:24	0:30:41	0:35:25	0:17:31	0:28:21
Feb-24	0:13:24	0:22:09	0:42:10	0:25:39	0:28:00	0:43:16	0:29:31	0:24:40	0:15:00	0:20:24
Mar-24	0:13:10	0:23:03	0:38:12	0:26:33	0:32:10	0:48:19	0:28:20	0:29:27	0:15:19	0:19:42
Apr-24	0:12:53	0:22:07	0:42:22	0:24:23	0:30:06	0:58:57	0:26:47	0:27:31	0:16:24	0:24:19
May-24	0:13:21	0:20:13	0:38:34	0:26:10	0:30:17	1:03:56	0:31:13	0:26:50	0:20:11	0:26:31

APOT 2 - May 2024

	≤ 20 minutes	21-60 minutes	61-120 minutes	121-180 minutes	>180 minutes	Total Patients
SHC	676 96.8%	21 3.0%	1 0.1%	0 0.0%	0 0.0%	698
ECH	837 91.3%	80 8.7%	0 0.0%	0 0.0%	0 0.0%	917
KSC	500 60.4%	316 38.2%	12 1.4%	0 0.0%	0 0.0%	828
RMC	1097 83.9%	197 15.1%	13 1.0%	0 0.0%	0 0.0%	1307
OCH	916 77.2%	261 22.0%	7 0.6%	2 0.2%	0 0.0%	1186
VMC	774 64.7%	288 24.1%	116 9.7%	15 1.3%	4 0.3%	1197
GSH	811 77.7%	223 21.4%	10 1.0%	0 0.0%	0 0.0%	1044
KSJ	720 82.1%	155 17.7%	2 0.2%	0 0.0%	0 0.0%	877
SLH	376 90.4%	40 9.6%	0 0.0%	0 0.0%	0 0.0%	416
LGH	141 86.5%	18 11.0%	4 2.5%	0 0.0%	0 0.0%	163
TOTAL	6848 79.3%	1599 18.5%	165 1.9%	17 0.2%	4 0.0%	8633

Ambulance Patient Offload Time (APOT) - 90th Percentile



	Jan-24	Feb-24	Mar-24	Apr-24	May-24	Jun-24
SHC	0:13:20	0:13:24	0:13:10	0:12:53	0:13:21	0:13:13
ECH	0:25:04	0:22:09	0:23:03	0:22:07	0:20:13	0:20:44
KSC	0:43:28	0:42:10	0:38:12	0:42:22	0:38:34	0:34:10
RMC	0:31:11	0:25:39	0:26:33	0:24:23	0:26:10	0:26:08
OCH	0:31:23	0:28:00	0:32:10	0:30:06	0:30:17	0:27:54
VMC	1:07:24	0:43:16	0:48:19	0:58:57	1:03:56	0:47:16
GSH	0:30:41	0:29:31	0:28:20	0:26:47	0:31:13	0:29:40
KSJ	0:35:25	0:24:40	0:29:27	0:27:31	0:26:50	0:24:45
SLH	0:17:31	0:15:00	0:15:19	0:16:24	0:20:11	0:17:06
LGH	0:28:21	0:20:24	0:19:42	0:24:19	0:26:31	0:14:46

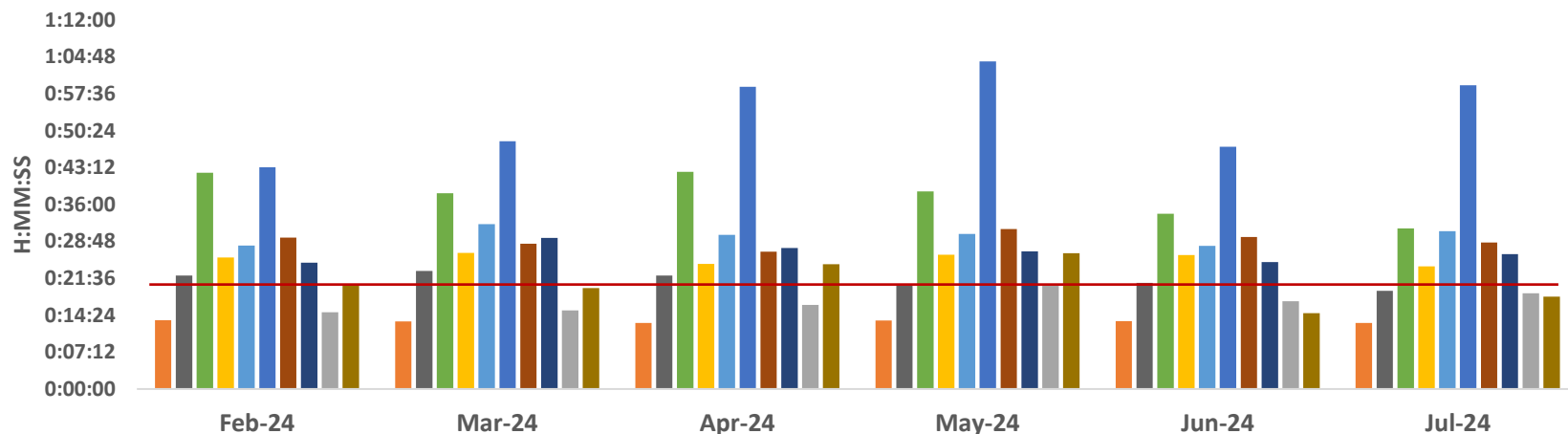
SHC ECH KSC RMC OCH VMC GSH KSJ SLH LGH

	SHC	ECH	KSC	RMC	OCH	VMC	GSH	KSJ	SLH	LGH
Jan-24	0:13:20	0:25:04	0:43:28	0:31:11	0:31:23	1:07:24	0:30:41	0:35:25	0:17:31	0:28:21
Feb-24	0:13:24	0:22:09	0:42:10	0:25:39	0:28:00	0:43:16	0:29:31	0:24:40	0:15:00	0:20:24
Mar-24	0:13:10	0:23:03	0:38:12	0:26:33	0:32:10	0:48:19	0:28:20	0:29:27	0:15:19	0:19:42
Apr-24	0:12:53	0:22:07	0:42:22	0:24:23	0:30:06	0:58:57	0:26:47	0:27:31	0:16:24	0:24:19
May-24	0:13:21	0:20:13	0:38:34	0:26:10	0:30:17	1:03:56	0:31:13	0:26:50	0:20:11	0:26:31
Jun-24	0:13:13	0:20:44	0:34:10	0:26:08	0:27:54	0:47:16	0:29:40	0:24:45	0:17:06	0:14:46

APOT 2 - June 2024

	≤ 20 minutes	21-60 minutes	61-120 minutes	121-180 minutes	>180 minutes	Total Patients
SHC	638 97.1%	18 2.7%	1 0.2%	0 0.0%	0 0.0%	657
ECH	785 90.6%	80 9.2%	1 0.1%	0 0.0%	0 0.0%	866
KSC	574 67.9%	262 31.0%	9 1.1%	0 0.0%	0 0.0%	845
RMC	967 83.8%	175 15.2%	10 0.9%	2 0.2%	0 0.0%	1154
OCH	944 81.7%	209 18.1%	2 0.2%	0 0.0%	0 0.0%	1155
VMC	822 71.6%	252 22.0%	66 5.7%	6 0.5%	2 0.2%	1148
GSH	723 75.5%	219 22.9%	16 1.7%	0 0.0%	0 0.0%	958
KSJ	694 84.1%	128 15.5%	3 0.4%	0 0.0%	0 0.0%	825
SLH	384 93.0%	29 7.0%	0 0.0%	0 0.0%	0 0.0%	413
LGH	147 93.0%	9 5.7%	2 1.3%	0 0.0%	0 0.0%	158
TOTAL	6678 81.6%	1381 16.9%	110 1.3%	8 0.1%	2 0.0%	8179

Ambulance Patient Offload Time (APOT) - 90th Percentile



	Feb-24	Mar-24	Apr-24	May-24	Jun-24	Jul-24
SHC	0:13:24	0:13:10	0:12:53	0:13:21	0:13:13	0:12:52
ECH	0:22:09	0:23:03	0:22:07	0:20:13	0:20:44	0:19:09
KSC	0:42:10	0:38:12	0:42:22	0:38:34	0:34:10	0:31:20
RMC	0:25:39	0:26:33	0:24:23	0:26:10	0:26:08	0:23:55
OCH	0:28:00	0:32:10	0:30:06	0:30:17	0:27:54	0:30:46
VMC	0:43:16	0:48:19	0:58:57	1:03:56	0:47:16	0:59:17
GSH	0:29:31	0:28:20	0:26:47	0:31:13	0:29:40	0:28:34
KSJ	0:24:40	0:29:27	0:27:31	0:26:50	0:24:45	0:26:18
SLH	0:15:00	0:15:19	0:16:24	0:20:11	0:17:06	0:18:42
LGH	0:20:24	0:19:42	0:24:19	0:26:31	0:14:46	0:18:01

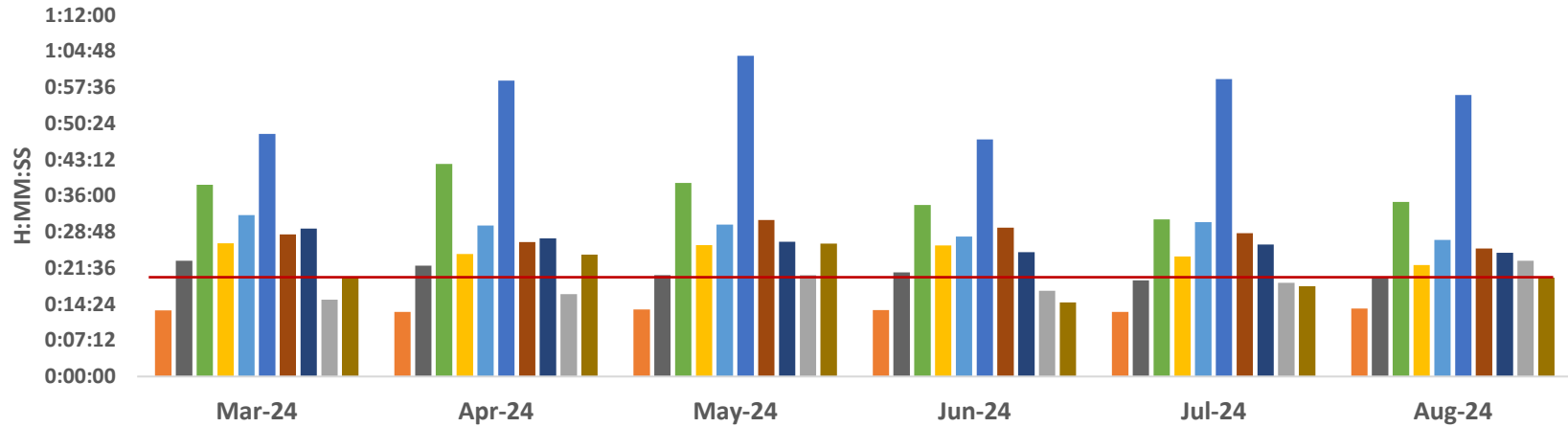
SHC ECH KSC RMC OCH VMC GSH KSJ SLH LGH

	SHC	ECH	KSC	RMC	OCH	VMC	GSH	KSJ	SLH	LGH
Feb-24	0:13:24	0:22:09	0:42:10	0:25:39	0:28:00	0:43:16	0:29:31	0:24:40	0:15:00	0:20:24
Mar-24	0:13:10	0:23:03	0:38:12	0:26:33	0:32:10	0:48:19	0:28:20	0:29:27	0:15:19	0:19:42
Apr-24	0:12:53	0:22:07	0:42:22	0:24:23	0:30:06	0:58:57	0:26:47	0:27:31	0:16:24	0:24:19
May-24	0:13:21	0:20:13	0:38:34	0:26:10	0:30:17	1:03:56	0:31:13	0:26:50	0:20:11	0:26:31
Jun-24	0:13:13	0:20:44	0:34:10	0:26:08	0:27:54	0:47:16	0:29:40	0:24:45	0:17:06	0:14:46
Jul-24	0:12:52	0:19:09	0:31:20	0:23:55	0:30:46	0:59:17	0:28:34	0:26:18	0:18:42	0:18:01

APOT 2 - July 2024

	≤ 20 minutes	21-60 minutes	61-120 minutes	121-180 minutes	>180 minutes	Total Patients
SHC	612 98.1%	10 1.6%	2 0.3%	0 0.0%	0 0.0%	624
ECH	806 92.9%	62 7.1%	0 0.0%	0 0.0%	0 0.0%	868
KSC	596 71.3%	233 27.9%	7 0.8%	0 0.0%	0 0.0%	836
RMC	1106 86.9%	164 12.9%	3 0.2%	0 0.0%	0 0.0%	1273
OCH	978 75.2%	314 24.2%	7 0.5%	1 0.1%	0 0.0%	1300
VMC	793 65.7%	298 24.7%	92 7.6%	17 1.4%	7 0.6%	1207
GSH	789 77.1%	225 22.0%	10 1.0%	0 0.0%	0 0.0%	1024
KSJ	707 82.5%	147 17.2%	3 0.4%	0 0.0%	0 0.0%	857
SLH	438 91.3%	41 8.5%	1 0.2%	0 0.0%	0 0.0%	480
LGH	139 90.8%	12 7.8%	2 1.3%	0 0.0%	0 0.0%	153
TOTAL	6964 80.8%	1506 17.5%	127 1.5%	18 0.2%	7 0.1%	8622

Ambulance Patient Offload Time (APOT) - 90th Percentile



	Mar-24	Apr-24	May-24	Jun-24	Jul-24	Aug-24
SHC	0:13:10	0:12:53	0:13:21	0:13:13	0:12:52	0:13:34
ECH	0:23:03	0:22:07	0:20:13	0:20:44	0:19:09	0:19:44
KSC	0:38:12	0:42:22	0:38:34	0:34:10	0:31:20	0:34:49
RMC	0:26:33	0:24:23	0:26:10	0:26:08	0:23:55	0:22:14
OCH	0:32:10	0:30:06	0:30:17	0:27:54	0:30:46	0:27:15
VMC	0:48:19	0:58:57	1:03:56	0:47:16	0:59:17	0:56:06
GSH	0:28:20	0:26:47	0:31:13	0:29:40	0:28:34	0:25:30
KSJ	0:29:27	0:27:31	0:26:50	0:24:45	0:26:18	0:24:38
SLH	0:15:19	0:16:24	0:20:11	0:17:06	0:18:42	0:23:04
LGH	0:19:42	0:24:19	0:26:31	0:14:46	0:18:01	0:19:44

SHC ECH KSC RMC OCH VMC GSH KSJ SLH LGH

	SHC	ECH	KSC	RMC	OCH	VMC	GSH	KSJ	SLH	LGH
Mar-24	0:13:10	0:23:03	0:38:12	0:26:33	0:32:10	0:48:19	0:28:20	0:29:27	0:15:19	0:19:42
Apr-24	0:12:53	0:22:07	0:42:22	0:24:23	0:30:06	0:58:57	0:26:47	0:27:31	0:16:24	0:24:19
May-24	0:13:21	0:20:13	0:38:34	0:26:10	0:30:17	1:03:56	0:31:13	0:26:50	0:20:11	0:26:31
Jun-24	0:13:13	0:20:44	0:34:10	0:26:08	0:27:54	0:47:16	0:29:40	0:24:45	0:17:06	0:14:46
Jul-24	0:12:52	0:19:09	0:31:20	0:23:55	0:30:46	0:59:17	0:28:34	0:26:18	0:18:42	0:18:01
Aug-24	0:13:34	0:19:44	0:34:49	0:22:14	0:27:15	0:56:06	0:25:30	0:24:38	0:23:04	0:19:44

APOT 2 - Aug 2024

	≤ 20 minutes	21-60 minutes	61-120 minutes	121-180 minutes	>180 minutes	Total Patients
SHC	639 97.9%	14 2.1%	0 0.0%	0 0.0%	0 0.0%	653
ECH	864 92.3%	72 7.7%	0 0.0%	0 0.0%	0 0.0%	936
KSC	565 68.0%	251 30.2%	15 1.8%	0 0.0%	0 0.0%	831
RMC	948 88.6%	119 11.1%	3 0.3%	0 0.0%	0 0.0%	1070
OCH	984 81.4%	225 18.6%	0 0.0%	0 0.0%	0 0.0%	1209
VMC	868 68.3%	294 23.1%	96 7.6%	10 0.8%	3 0.2%	1271
GSH	806 83.4%	160 16.5%	1 0.1%	0 0.0%	0 0.0%	967
KSJ	703 86.5%	106 13.0%	4 0.5%	0 0.0%	0 0.0%	813
SLH	377 87.7%	53 12.3%	0 0.0%	0 0.0%	0 0.0%	430
LGH	135 90.6%	12 8.1%	2 1.3%	0 0.0%	0 0.0%	149
TOTAL	6889 82.7%	1306 15.7%	121 1.5%	10 0.1%	3 0.0%	8329