

GIS IN THE ASSESSOR'S OFFICE



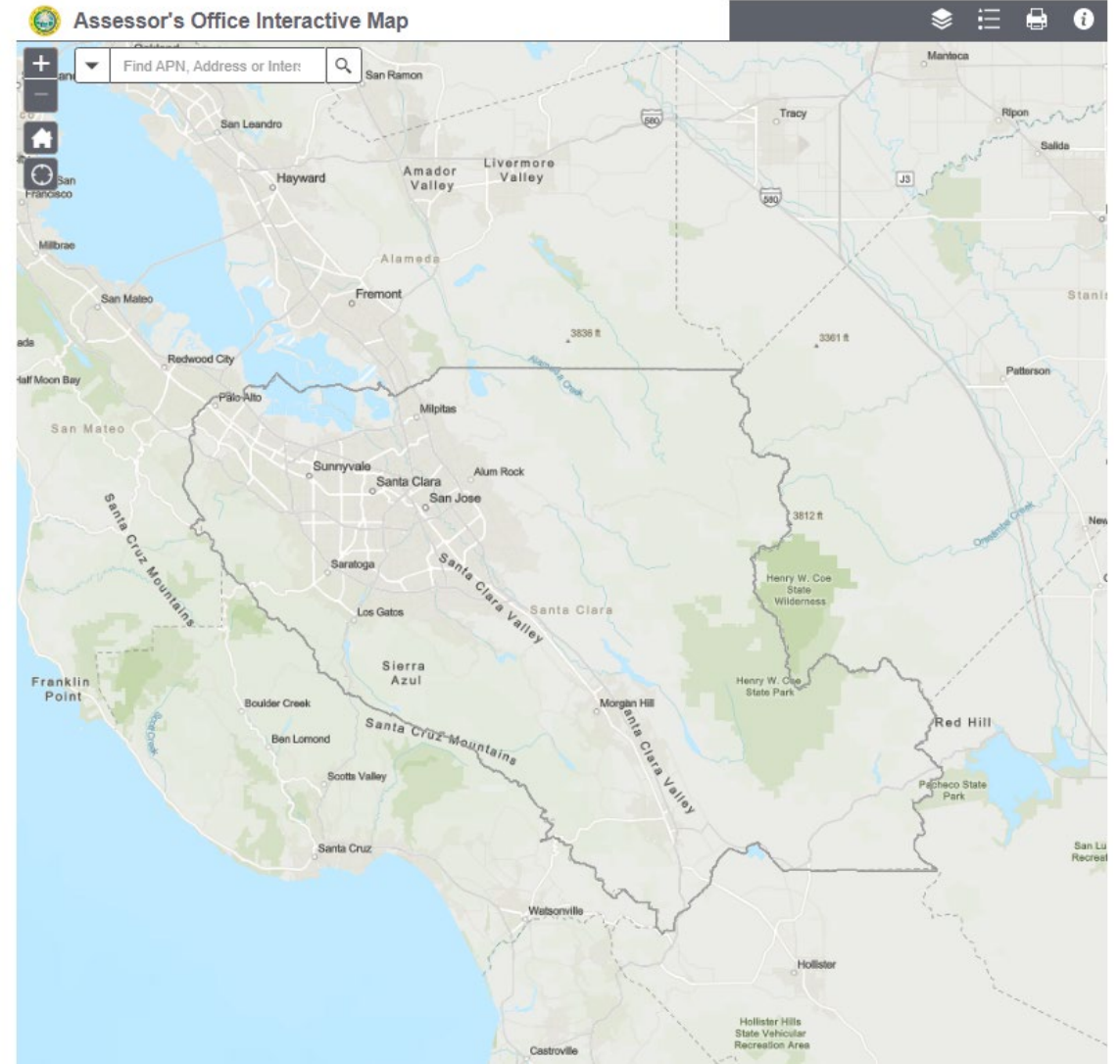
County of Santa Clara

Geographic Information Services

JENNIFER PARRA-MACDOUGALL & LYNN ZHANG

AGENDA

- INTRODUCTION
- DEMO
- HOW WE USE IT INTERNALLY
- QUESTIONS





INTRODUCTION

- Why is Mapping Important?
- What is GIS?
- Why the Assessor's Office utilizes GIS.





DEMO

ASSESSOR'S
OFFICE

INTERACTIVE
MAP



Home

Online Services ▾

Property Information ▾

Tax Savings ▾

Forms and Publications ▾

About Us ▾

FAQ ▾

Member Services ▾

Customer Survey

Property Search

Decline In Value

Member Services

Assessment Look-up

- Real Property Search

- Decline in Value Request

- Create Account

- Notification of Assessed Value

- **Search by Map**

- Important Information about Prop 8

- Log-In

- Appraisal and Comparable Sales

- Searching Records, Buying Maps

Business e-Filing

Exemptions

Supplemental Tax Estimator

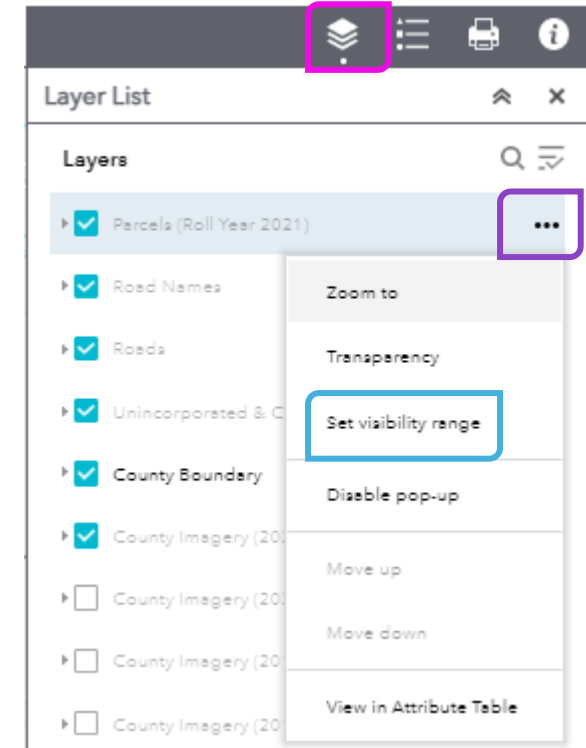
- Mobile Home Property Search

NAVIGATING TO GIS MAP

- Assessor's Office Main Page - [Santa Clara County Assessor's Public Portal \(sccassessor.org\)](http://sccassessor.org)
- Interactive Web Map - [Search by Map \(sccassessor.org\)](http://sccassessor.org)

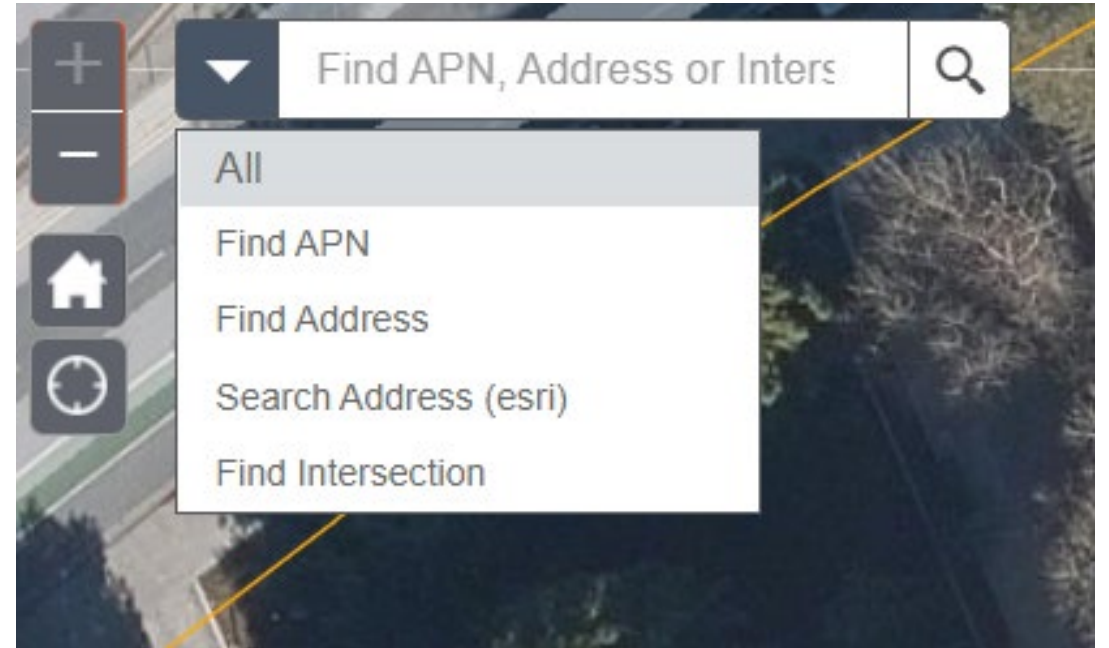
LAYERS FUNCTIONALITY

- Click on the far-left **icon** to open the Layer List
- Click on the **ellipsis** to open options for a specific layer
- Greyed out layers are not visible at the current zoom extent
 - This can be changed using the **Set visibility range**
- Use the check marks to turn layers on and off
- Use arrow \approx to minimize/maximize Layer List panel



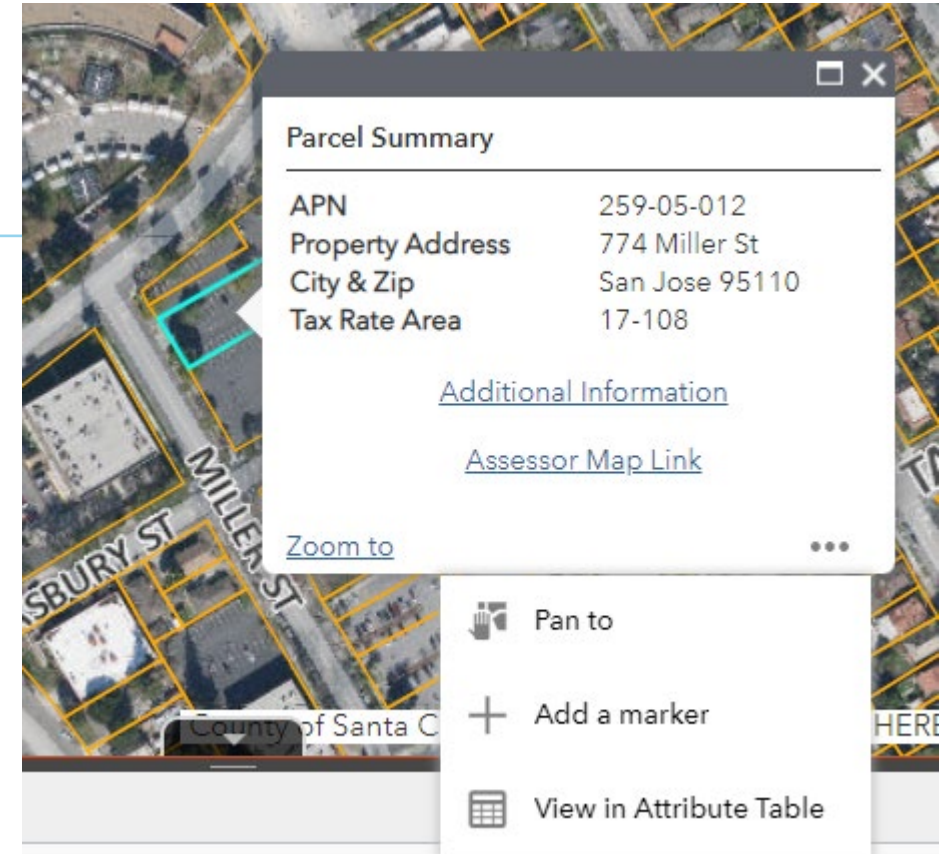
SEARCHING

- Default and easiest option is to search by All options.
- When searching by APN make sure to leave out dashes
- Search Address (esri) will give you suggestions of addresses that might match your query
- Will automatically zoom to the location of the result



- Pop-up will automatically appear after searching
- Can also click on a parcel and the window will pop up
- Additional Information Link will take you to the Property Information Page
- Assessor Map Link will download a PDF of the most recent Roll Year page that the parcel is associated with
- Ellipses options in the bottom right corner

POP-UP





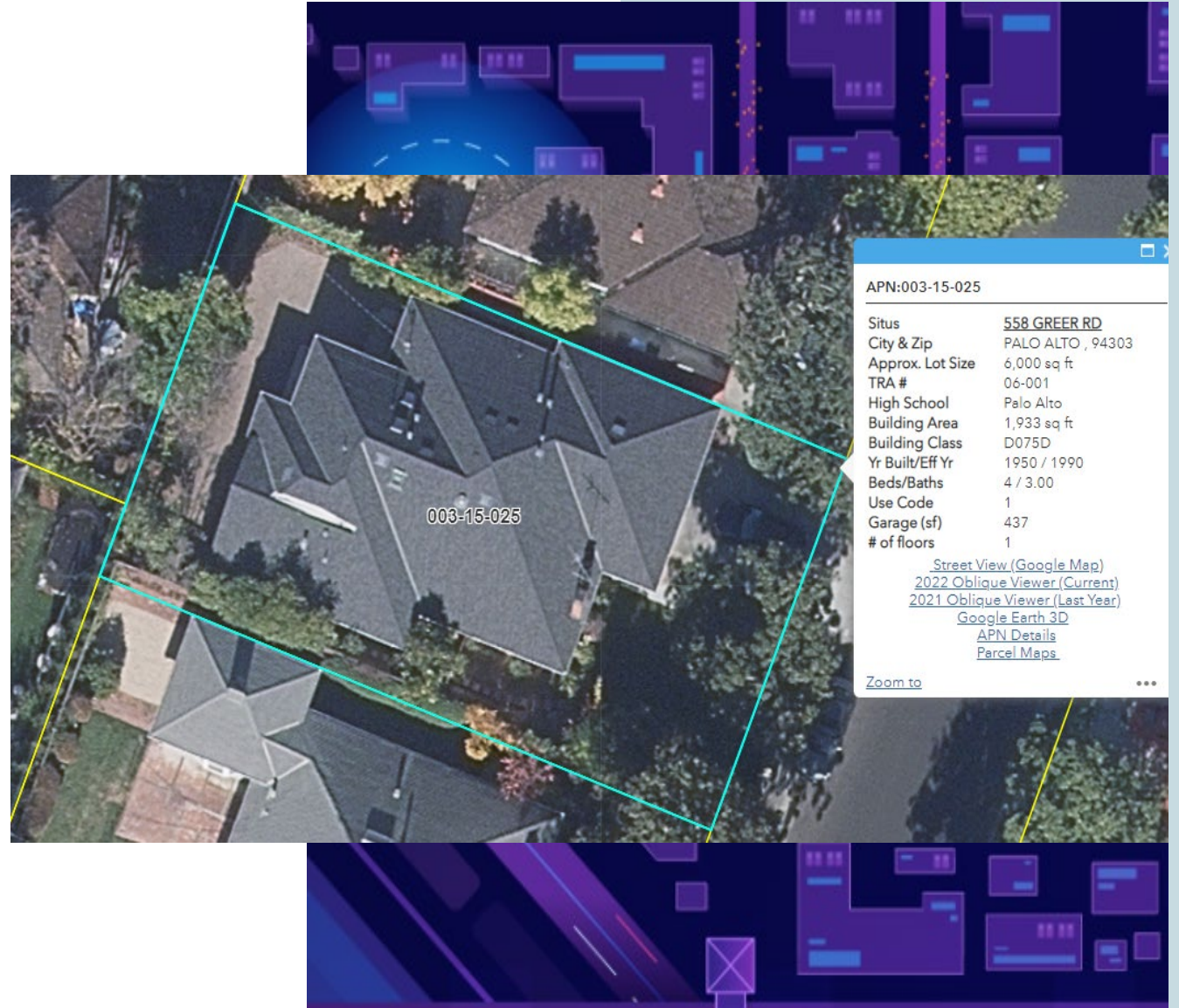
ASR GIS MAP – WORKFLOW INTEGRATION

- Visualizes our data: weekly updated APNs, Book, Page, Inactive layers, Assignments, High school boundary, TRA, District, City, Unincorporated area, Williamson act, Slope, & Images with a pop up in a meaningful way.
- Links to open internal database/ APN details, parcel maps, google street views, 3D, Sanborn high resolution oblique viewer, Recorder's office, and Surveyor's tract maps.
- Rich functions such as search, show different views at the same time, draw, query/select, export to csv/PDF, and print to facilitate daily work.

ASR GIS MAP

ASR GIS MAP APPLICATION - DEMO

- INTEGRATED APPLICATION FOR ASSESSOR'S OFFICE DAILY WORK
- ACCURACY (DATA UPDATE FREQUENCY):
 - Every Monday morning see last Friday's APN /parcel update
- PAGE/ INACTIVE APN LAYER MONTHLY;
- TRA/ ASSIGNMENTS/WILLIAMSON ACT ECT. ANNUALLY



TAKE AWAYS

The Assessor's Office strives to maintain a high level of accuracy and efficiency while producing the annual assessment roll. Paired with that mission, is a need for information transparency when providing assessment-related information to the public. Our GIS web map application is the Assessor's Office direct link to the public. This tool is a step towards making information more accessible and a move forward technologically for the office.





THANK YOU

JENNIFER PARRA-MACDOUGALL | LYNN ZHANG
JENNIFER.PARRA@ASR.SCCGOV.ORG | LYNN.ZHANG@ASR.SCCGOV.ORG

Questions	Answers
Do you anticipate continuing the paper maps or are you going all digital	Currently the Assessor's Office produces all their maps digitally in CAD and then they are converted to our online GIS platform. Both digital copies, form CAD and the GIS Polygons, can be printed in PDF format. We currently only produce paper copies on request. If you would like a paper copy of the Assessor Book/Page, , you can always print a free copy from your home or office or come to our office to request a printed paper copy for a small fee.
What advice would you give to a county that has been using AutoCAD to create the assessors map but is considering moving to GIS?	We are currently utilizing both AutoCAD and a GIS. Our maps are initially drawn in AutoCAD and then we pull the parcel boundary data to generate a shapefile which is then appended to our GIS database. Our GIS is mainly used for internal projects and to make the information more attainable for the public on our external website. If you are considering moving to GIS, the best place to start, is to look into the budget of your department and potentially work with a vendor to tailor the functionality specifically to your needs. The conversion of AutoCAD data to a GIS can be a lengthy process and having some of that work completed by a third party can help with time/work constraints. If you are currently not using GIS in any capacity, we would recommend moving directly to a parcel fabric framework as opposed to converting your AutoCAD polygons to a geodatabase and then compiling information into a parcel fabric later. By doing the conversion to parcel fabric all at once, it saves on time and potentially funding.
Thank you! That was great presentation. Could you post the link of this web application?	https://www.sccassessor.org/online-services/property-search/search-by-map is for public. Lynn's demo is an internal application, and not available to the public.

Q & A