



PRCS / 1170h MS Released 2011-10 to 2017-03

Month	By Month/Supervision						Total
	1170(H)MS			PRCS			
	F	M	Total	F	M	Total	
2011-10	1	5	6	12	107	119	125
2011-11	1	2	3	20	116	136	139
2011-12	4	9	13	22	122	144	157
2012-01	1	6	7	17	87	104	111
2012-02	1	10	11	10	74	84	95
2012-03	3	7	10	8	73	81	91
2012-04	2	11	13	7	79	86	99
2012-05	1	3	4	8	70	78	82
2012-06	5	11	16	4	72	76	92
2012-07	2	13	15	9	54	63	78
2012-08	5	14	19	2	52	54	73
2012-09	3	14	17	1	57	58	75
2012-10	7	20	27	4	58	62	89
2012-11	2	8	10	4	37	41	51
2012-12	2	15	17	4	53	57	74
2013-01	3	18	21	2	46	48	69
2013-02	1	12	13	1	45	46	59
2013-03	2	14	16	4	38	42	58
2013-04	2	11	13	1	41	42	55
2013-05	5	14	19		41	41	60
2013-06	4	18	22	2	42	44	66
2013-07	4	17	21	3	32	35	56
2013-08	8	20	28	1	46	47	75
2013-09	9	18	27		41	41	68
2013-10	6	18	24	4	36	40	64
2013-11	9	22	31	3	38	41	72
2013-12	3	30	33	2	41	43	76
2014-01	7	35	42	4	54	58	100
2014-02	8	24	32	3	34	37	69
2014-03	5	23	28	5	45	50	78
2014-04	12	24	36	4	41	45	81
2014-05	10	32	42	9	49	58	100
2014-06	12	29	41	3	50	53	94
2014-07	7	19	26	3	45	48	74

Month	By Month/Supervision						Total
	1170(H)MS			PRCS			
	F	M	Total	F	M	Total	
2014-08	5	20	25	2	48	50	75
2014-09	5	17	22	3	45	48	70
2014-10	11	30	41	8	28	36	77
2014-11	5	35	40	2	43	45	85
2014-12	9	29	38	3	38	41	79
2015-01	12	29	41	3	42	45	86
2015-02	5	26	31	1	38	39	70
2015-03	3	26	29	2	37	39	68
2015-04	6	20	26	1	27	28	54
2015-05	2	13	15	2	30	32	47
2015-06	9	26	35	4	45	49	84
2015-07	1	17	18	4	25	29	47
2015-08	4	24	28	4	43	47	75
2015-09	4	22	26	1	36	37	63
2015-10	8	19	27	3	38	41	68
2015-11	6	25	31	2	38	40	71
2015-12	11	12	23	1	47	48	71
2016-01	7	19	26	2	51	53	79
2016-02	7	29	36	5	32	37	73
2016-03	6	19	25	3	35	38	63
2016-04	4	23	27	3	32	35	62
2016-05	8	21	29	4	35	39	68
2016-06	7	21	28	2	29	31	59
2016-07	8	20	28	1	39	40	68
2016-08	7	15	22	1	31	32	54
2016-09	8	23	31	2	36	38	69
2016-10	3	26	29	6	30	36	65
2016-11	1	11	12	1	30	31	43
2016-12	2	22	24		34	34	58
2017-01	6	25	31	3	32	35	66
2017-02	6	19	25	3	33	36	61
2017-03	4	19	23	2	38	40	63
<b>Total</b>	<b>347</b>	<b>1248</b>	<b>1595</b>	<b>270</b>	<b>3081</b>	<b>3351</b>	<b>4946</b>



170h MS Released 2011-10 to 2017-03

By Ethnicity/Gender				
Ethnicity	F	M	Total	%
AMERICAN INDIAN		10	10	0%
ASIAN INDIAN	1	10	11	0%
BLACK	79	576	655	13%
CAMBODIAN		6	6	0%
CAUCASIAN	199	1075	1274	26%
CHINESE		5	5	0%
FILIPINO	9	60	69	1%
GUAMANIAN	1	2	3	0%
HAWAIIAN	0	0	0	0%
HISPANIC	279	2226	2505	51%
JAPANESE		2	2	0%
KOREAN		6	6	0%
LAOTIAN	0	0	0	0%
OTHER	7	55	62	1%
OTHER ASIAN	20	114	134	3%
PACIFIC ISLANDER	5	17	22	0%
SAMOAN	1	2	3	0%
UNKNOWN	1	4	5	0%
VIETNAMESE	15	159	174	4%
<b>Total</b>	<b>617</b>	<b>4329</b>	<b>4946</b>	<b>100.00%</b>

By Supervision/Gender				
Program	F	M	Total	%
1170h MS	347	1248	1595	32.25%
PRCS	270	3081	3351	67.75%
<b>Total</b>	<b>617</b>	<b>4329</b>	<b>4946</b>	<b>100.00%</b>

By Age/Gender				
Program	F	M	Total	%
18-24	54	509	563	11.38%
25-34	269	1540	1809	36.58%
35-44	175	1202	1377	27.84%
45-54	93	816	909	18.38%
55+	26	262	288	5.82%
<b>Total</b>	<b>617</b>	<b>4329</b>	<b>4946</b>	<b>100.00%</b>

By City - All Age Groups				
By City	F	M	Total	%
Alviso	1	3	4	0.1%
Campbell	9	59	68	1.4%
Cupertino	1	13	14	0.3%
Gilroy	27	180	207	4.2%
Hospitalized		2	2	0.0%
In Custody	42	259	301	6.1%
INS Deported	1	36	37	0.7%
Los Altos	2	5	7	0.1%
Los Gatos	3	20	23	0.5%
Milpitas	6	70	76	1.5%
Morgan Hill	13	49	62	1.3%
Mountain View	3	44	47	1.0%
New Almaden		1	1	0.0%
Out Of County	93	513	606	12.3%
Palo Alto	2	20	22	0.4%
San Jose	282	1993	2275	46.0%
San Martin	8	16	24	0.5%
Santa Clara	29	106	135	2.7%
Saratoga	2	5	7	0.1%
Sunnyvale	14	78	92	1.9%
Transient	76	819	895	18.1%
Unknown	3	38	41	0.8%
<b>Grand Total</b>	<b>617</b>	<b>4329</b>	<b>4946</b>	<b>100.00%</b>

By City - 25-34 Age Group				
By City	F	M	Total	%
Alviso	1	1	2	0.1%
Campbell	5	26	31	1.7%
Cupertino		3	3	0.2%
Gilroy	10	69	79	4.4%
INS Deported		12	12	0.7%
Los Gatos		7	7	0.4%
Milpitas	1	22	23	1.3%
Morgan Hill	6	11	17	0.9%
Mountain View	1	19	20	1.1%
Out Of County	39	223	262	14.5%
Palo Alto	1	10	11	0.6%
San Jose	133	686	819	45.3%
San Martin	3	4	7	0.4%
Santa Clara	14	46	60	3.3%
Saratoga	1	1	2	0.1%
Sunnyvale	5	30	35	1.9%
Transient	25	239	264	14.6%
Unknown	2	11	13	0.7%
In Custody	22	120	142	7.8%
<b>Total</b>	<b>269</b>	<b>1540</b>	<b>1809</b>	<b>100.0%</b>



PRCS / 1170h MS Released 2011-10 to 2017-03

By City/ Zip - All Age Groups					
By City	Zip	F	M	Total	%
Alviso	95002	1	3	4	0.1%
Campbell	95008	9	56	65	1.3%
	Unknown		3	3	0.1%
Cupertino	95014	1	13	14	0.3%
Gilroy	95020	27	178	205	4.1%
	Unknown		2	2	0.0%
Hospitalized			2	2	0.0%
In Custody		42	259	301	6.1%
INS Departed		1	36	37	0.7%
Los Altos	94022	2	3	5	0.1%
	94024		2	2	0.0%
Los Gatos	95030	1		1	0.0%
	95032	1	14	15	0.3%
	95033	1	6	7	0.1%
Milpitas	95035	6	67	73	1.5%
	Unknown		3	3	0.1%
Morgan Hill	95037	11	48	59	1.2%
	Unknown	2	1	3	0.1%
Mountain View	94035		1	1	0.0%
	94040	3	11	14	0.3%
	94041		5	5	0.1%
	94043		23	23	0.5%
	Unknown		4	4	0.1%
New Almaden	95042		1	1	0.0%
Out Of County		93	513	606	12.3%
Palo Alto	94301		3	3	0.1%
	94303	1	1	2	0.0%
	94306	1	16	17	0.3%
San Jose	95101		1	1	0.0%
	95110	16	98	114	2.3%
	95111	14	149	163	3.3%
	95112	37	235	272	5.5%
	95113		7	7	0.1%
	95116	26	180	206	4.2%
	95117	8	43	51	1.0%
	95118	4	41	45	0.9%
	95119	5	7	12	0.2%
	95120	1	15	16	0.3%
	95121	11	91	102	2.1%
	95122	11	160	171	3.5%
	95123	21	127	148	3.0%
	95124	3	50	53	1.1%
	95125	12	101	113	2.3%
	95126	11	87	98	2.0%
	95127	27	178	205	4.1%
	95128	13	63	76	1.5%
	95129	3	15	18	0.4%
	95130	2	15	17	0.3%
	95131	5	26	31	0.6%
	95132	8	48	56	1.1%
	95133	5	50	55	1.1%
	95134	4	13	17	0.3%
	95135		13	13	0.3%
	95136	11	64	75	1.5%
	95138	9	14	23	0.5%
	95139	4	14	18	0.4%
	95148	7	68	75	1.5%
	95151	1		1	0.0%
	95158		1	1	0.0%
	Unknown	3	19	22	0.4%

By City/ Zip - All Age Groups					
By City	Zip	F	M	Total	%
San Martin	95046	8	16	24	0.5%
Santa Clara	95050	8	43	51	1.0%
	95051	14	43	57	1.2%
	95054	7	16	23	0.5%
	95056		1	1	0.0%
	Unknown		3	3	0.1%
Saratoga	95070	2	4	6	0.1%
	Unknown		1	1	0.0%
Sunnyvale	94085	1	18	19	0.4%
	94086	4	24	28	0.6%
	94087	2	9	11	0.2%
	94088		1	1	0.0%
	94089	5	21	26	0.5%
	Unknown	2	5	7	0.1%
Transient		76	819	895	18.1%
Unknown		3	38	41	0.0%
<b>Grand Total</b>		<b>617</b>	<b>4329</b>	<b>4946</b>	<b>100.0%</b>

Transient By Supervision				
Supervision	F	M	Total	%
1170h MS	44	210	254	28.4%
PRCS	32	609	641	71.6%
<b>Total</b>	<b>76</b>	<b>819</b>	<b>895</b>	<b>100.0%</b>

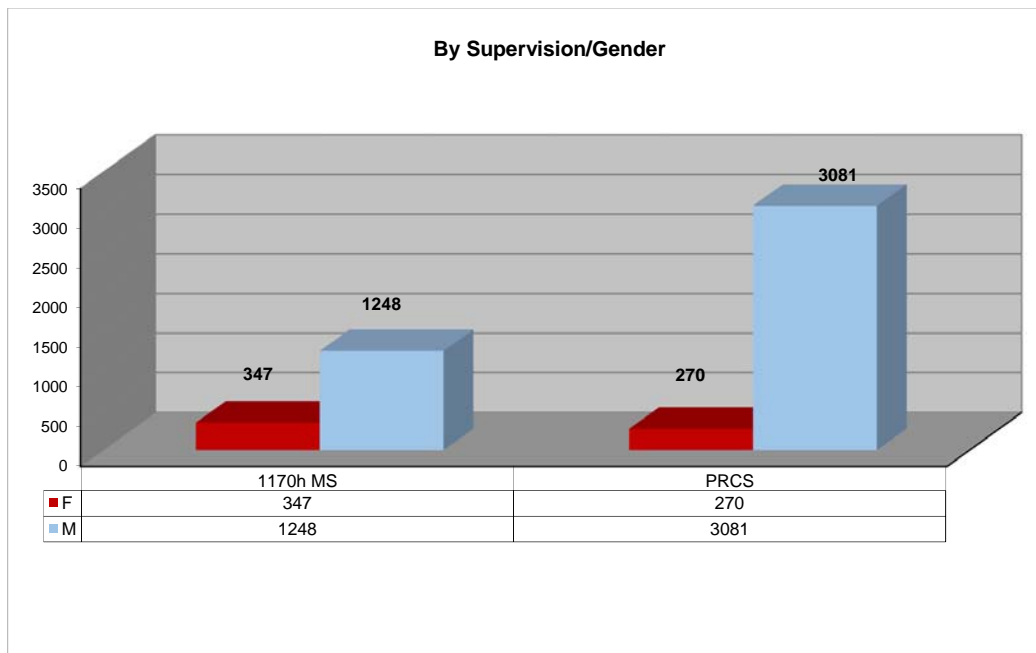
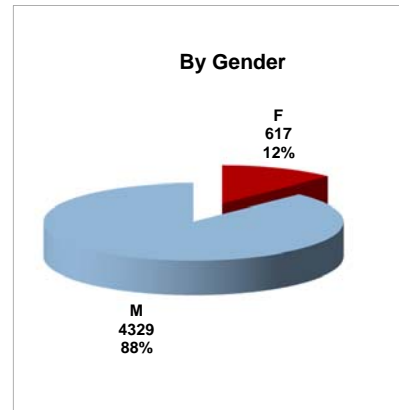
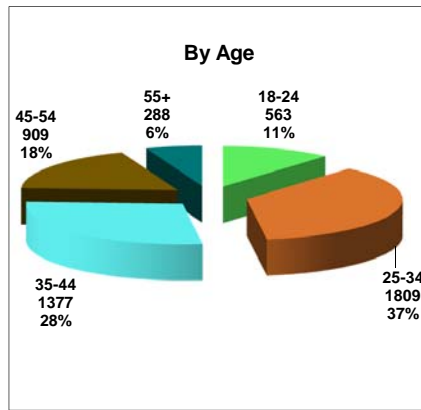
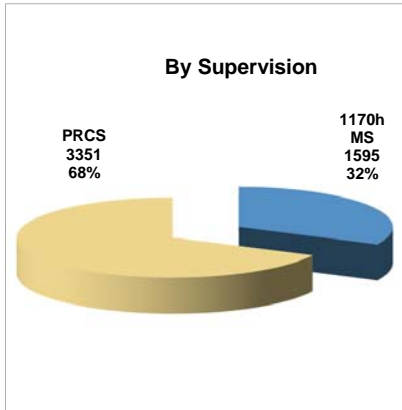
Transient By Age				
Age	F	M	Total	%
18 - 24	7	55	62	6.9%
25 - 34	25	239	264	29.5%
35 - 44	29	244	273	30.5%
45 - 54	13	212	225	25.1%
55+	2	69	71	7.9%
<b>Total</b>	<b>76</b>	<b>819</b>	<b>895</b>	<b>100.0%</b>

Transient By Ethnicity				
Ethnicity	F	M	Total	%
AMERICAN INDIAN		2	2	0.2%
ASIAN INDIAN		3	3	0.3%
BLACK	11	132	143	16.0%
CAMBODIAN	0	0	0	0.0%
CAUCASIAN	23	222	245	27.4%
CHINESE		1	1	0.1%
FILIPINO	1	6	7	0.8%
HAWAIIAN	0	0	0	0.0%
HISPANIC	31	396	427	47.7%
KOREAN		4	4	0.4%
LAOTIAN	0	0	0	0.0%
OTHER		7	7	0.8%
OTHER ASIAN	5	15	20	2.2%
PACIFIC ISLANDER	1	4	5	0.6%
SAMOAN	1		1	0.1%
VIETNAMESE	3	27	30	3.4%
<b>Total</b>	<b>76</b>	<b>819</b>	<b>895</b>	<b>100.0%</b>

Transient Break down				
	F	M	Total	%
Currently Homeless	58	603	661	73.9%
Homeless-Shelter	7	84	91	10.2%
Homeless -Streets/Vehicles	11	132	143	16.0%
<b>Total</b>	<b>76</b>	<b>819</b>	<b>895</b>	<b>100.0%</b>

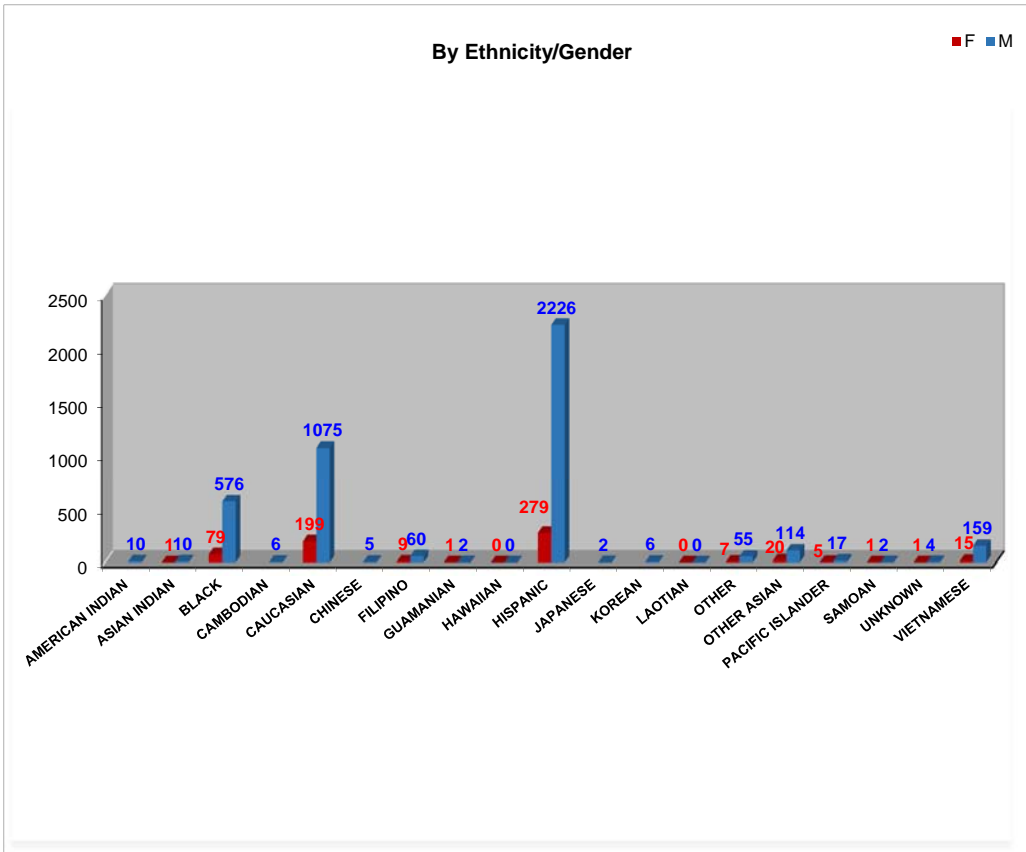
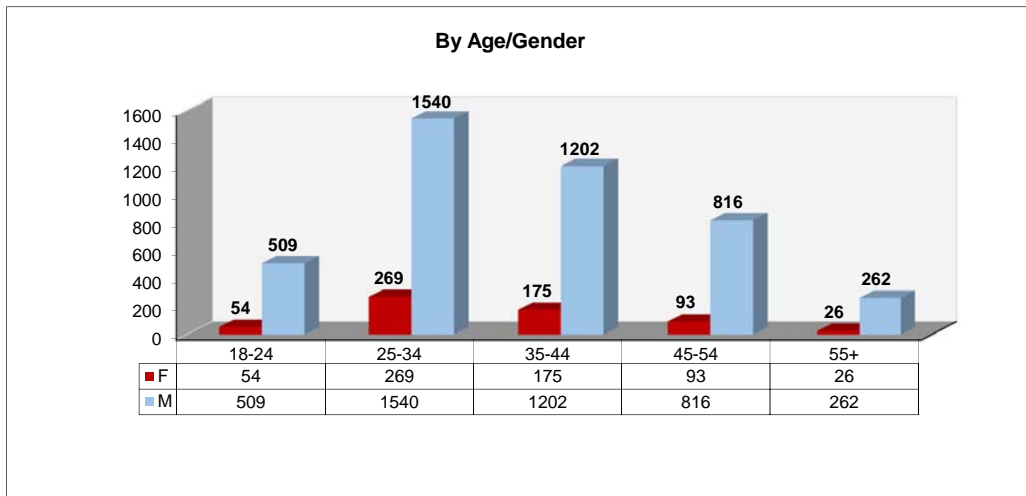


PRCS / 1170h MS Released 2011-10 to 2017-03





PRCS / 1170h MS Released 2011-10 to 2017-03

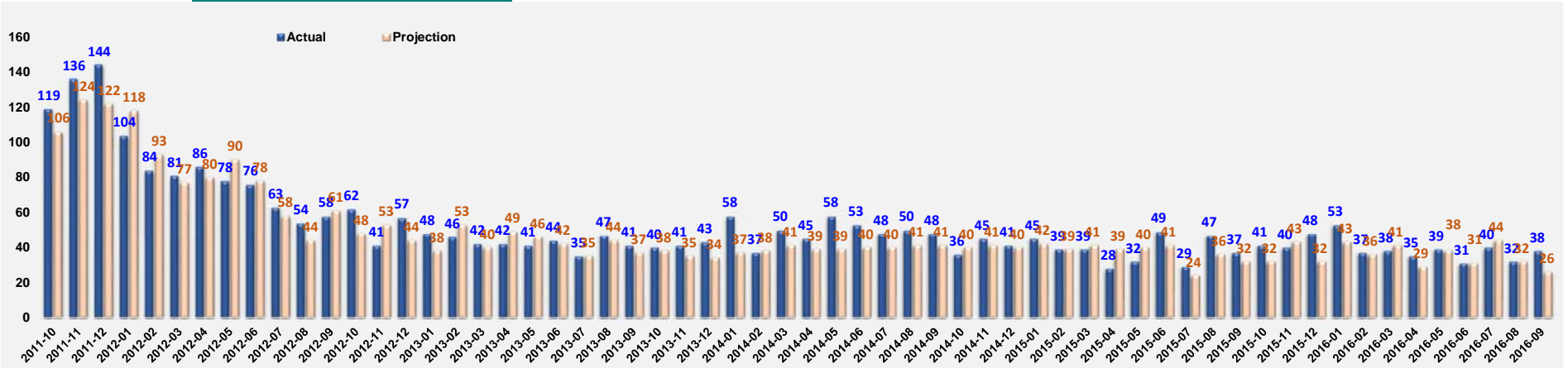




**CDCR Projected PRCS Releases vs. Actuals**  
2011-10 to 2016-09

Year	Month	Actual	Projection	Difference-Count	Difference-%
2017	Oct	119	106	13	12%
	Nov	136	124	12	10%
	Dec	144	122	22	18%
2012	Jan	104	118	-14	-12%
	Feb	84	93	-9	-10%
	Mar	81	77	4	5%
	Apr	86	80	6	8%
	May	78	90	-12	-13%
	Jun	76	78	-2	-3%
	Jul	63	58	5	9%
	Aug	54	44	10	23%
	Sep	58	61	-3	-5%
	Oct	62	48	14	29%
	Nov	41	53	-12	-23%
	Dec	57	44	13	30%
2013	Jan	48	38	10	26%
	Feb	46	53	-7	-13%
	Mar	42	40	2	5%
	Apr	42	49	-7	-14%
	May	41	46	-5	-11%
	Jun	44	42	2	5%
	Jul	35	35	0	0%
	Aug	47	44	3	7%
	Sep	41	37	4	11%
	Oct	40	38	2	5%
	Nov	41	35	6	17%
	Dec	43	34	9	26%
2014	Jan	58	37	21	57%
	Feb	37	38	-1	-3%
	Mar	50	41	9	22%
	Apr	45	39	6	15%
	May	58	39	19	49%

Year	Month	Actual	Projection	Difference-Count	Difference-%
June	53	40	13	33%	
July	48	40	8	20%	
August	50	41	9	22%	
September	48	41	7	17%	
October	36	40	-4	-10%	
November	45	41	4	10%	
December	41	40	1	3%	
2015	January	45	42	3	7%
	February	39	39	0	0%
	March	39	41	-2	-5%
	April	28	39	-11	-28%
	May	32	40	-8	-20%
	June	49	41	8	20%
	July	29	24	5	21%
	August	47	36	11	31%
	September	37	32	5	16%
	October	41	32	9	28%
	November	40	43	-3	-7%
	December	48	32	16	50%
2016	January	53	43	10	23%
	February	37	36	1	3%
	March	38	41	-3	-7%
	April	35	29	6	21%
	May	39	38	1	3%
	June	31	31	0	0%
	July	40	44	-4	-9%
	August	32	32	0	0%
	September	38	26	12	46%
<b>TOTAL</b>		<b>3050</b>	<b>2823</b>	<b>223</b>	<b>8%</b>





## CDCR Projected PRCS Releases vs. Actuals 2016-10 to 2017-03

Year	Month	Actual	Projection	Difference-Count	Difference-%
2016	Oct	119	106	13	12%
	Nov	136	124	12	10%
	Dec	144	122	22	18%
2017	Jan	104	118	-14	-12%
	Feb	84	93	-9	-10%
	Mar	81	77	4	5%
<b>TOTAL</b>		<b>668</b>	<b>640</b>	<b>28</b>	<b>4%</b>

