



PRCS / 1170h MS Released 2011-10 to 2017-12

By Month/Supervision								
Month	1170(H)MS			PRCS			Total	
	F	M	Total	F	M	Total		
2011-10	2	5	7	12	112	124	131	
2011-11	1	2	3	20	121	141	144	
2011-12	4	9	13	25	121	146	159	
2012-01	1	7	8	17	90	107	115	
2012-02	1	10	11	10	78	88	99	
2012-03	3	7	10	9	74	83	93	
2012-04	2	12	14	7	81	88	102	
2012-05	1	3	4	9	70	79	83	
2012-06	5	11	16	5	71	76	92	
2012-07	2	12	14	9	52	61	75	
2012-08	5	14	19	2	50	52	71	
2012-09	3	13	16	1	57	58	74	
2012-10	7	20	27	3	53	56	83	
2012-11	2	8	10	4	37	41	51	
2012-12	2	15	17	2	52	54	71	
2013-01	3	18	21	2	45	47	68	
2013-02	1	12	13	1	44	45	58	
2013-03	1	14	15	4	37	41	56	
2013-04	2	11	13	1	40	41	54	
2013-05	5	15	20		40	40	60	
2013-06	4	18	22	2	42	44	66	
2013-07	4	17	21	3	32	35	56	
2013-08	8	20	28	1	47	48	76	
2013-09	9	18	27		40	40	67	
2013-10	6	17	23	4	36	40	63	
2013-11	9	23	32	3	38	41	73	
2013-12	3	29	32	2	42	44	76	
2014-01	7	35	42	4	53	57	99	
2014-02	8	25	33	3	32	35	68	
2014-03	5	23	28	5	45	50	78	
2014-04	12	25	37	4	41	45	82	
2014-05	10	32	42	9	49	58	100	
2014-06	12	29	41	3	50	53	94	
2014-07	7	19	26	3	46	49	75	
2014-08	5	19	24	2	48	50	74	
2014-09	6	17	23	3	46	49	72	
2014-10	11	30	41	8	27	35	76	
2014-11	5	35	40	2	43	45	85	
2014-12	9	29	38	2	38	40	78	

By Month/Supervision								
Month	1170(H)MS			PRCS			Total	
	F	M	Total	F	M	Total		
2015-01	12	29	41	3	41	44	85	
2015-02	5	26	31	1	36	37	68	
2015-03	3	26	29	1	37	38	67	
2015-04	6	21	27	2	27	29	56	
2015-05	2	13	15	1	30	31	46	
2015-06	9	26	35	3	44	47	82	
2015-07	1	17	18	4	25	29	47	
2015-08	4	25	29	4	43	47	76	
2015-09	4	22	26	1	36	37	63	
2015-10	8	19	27	3	38	41	68	
2015-11	6	25	31	2	38	40	71	
2015-12	11	12	23	1	46	47	70	
2016-01	6	21	27	2	50	52	79	
2016-02	7	26	33	5	32	37	70	
2016-03	6	20	26	3	35	38	64	
2016-04	4	23	27	3	32	35	62	
2016-05	8	22	30	4	34	38	68	
2016-06	7	21	28	2	29	31	59	
2016-07	10	20	30	1	39	40	70	
2016-08	7	15	22	1	31	32	54	
2016-09	8	24	32	2	36	38	70	
2016-10	3	26	29	6	29	35	64	
2016-11	1	11	12	1	30	31	43	
2016-12	2	23	25		33	33	58	
2017-01	6	26	32	3	34	37	69	
2017-02	5	19	24	3	34	37	61	
2017-03	4	19	23	2	43	45	68	
2017-04	3	26	29	3	35	38	67	
2017-05	5	22	27	1	42	43	70	
2017-06	8	19	27	4	37	41	68	
2017-07	5	16	21	1	36	37	58	
2017-08	2	18	20	3	40	43	63	
2017-09	4	20	24	1	38	39	63	
2017-10	6	25	31	2	41	43	74	
2017-11	3	15	18	6	53	59	77	
2017-12	2	14	16	4	38	42	58	
Total	386	1430	1816	295	3442	3737	5553	



PRCS / 1170h MS Released 2011-10 to 2017-12

By Ethnicity/Gender				
Ethnicity	F	M	Total	%
AMERICAN INDIAN		10	10	0%
ASIAN INDIAN	1	10	11	0%
BLACK	90	643	733	13%
CAMBODIAN		7	7	0%
CAUCASIAN	217	1201	1418	26%
CHINESE		5	5	0%
FILIPINO	11	67	78	1%
GUAMANIAN	1	2	3	0%
HAWAIIAN	0	0	0	0%
HISPANIC	307	2525	2832	51%
JAPANESE		2	2	0%
KOREAN		7	7	0%
LAOTIAN	0	0	0	0%
OTHER	9	63	72	1%
OTHER ASIAN	22	130	152	3%
PACIFIC ISLANDER	4	17	21	0%
SAMOAN	1	2	3	0%
UNKNOWN	2	4	6	0%
VIETNAMESE	16	177	193	3%
Total	681	4872	5553	100.00%

By Supervision/Gender				
Program	F	M	Total	%
1170h MS	386	1430	1816	32.70%
PRCS	295	3442	3737	67.30%
Total	681	4872	5553	100.00%

By Age/Gender				
Program	F	M	Total	%
18-24	61	560	621	11.18%
25-34	299	1744	2043	36.79%
35-44	188	1355	1543	27.79%
45-54	102	911	1013	18.24%
55+	31	302	333	6.00%
Total	681	4872	5553	100.00%

By City - All Age Groups*				
By City	F	M	Total	%
Alviso	1	2	3	0.1%
Campbell	7	56	63	1.1%
Cupertino	1	12	13	0.2%
Gilroy	26	175	201	3.6%
Hospitalized		2	2	0.0%
In Custody	137	974	1111	20.0%
INS Custody		3	3	0.1%
INS Deported	1	36	37	0.7%
Los Altos	2	5	7	0.1%
Los Gatos	3	17	20	0.4%
Milpitas	7	65	72	1.3%
Morgan Hill	9	59	68	1.2%
Mountain View	4	41	45	0.8%
New Almaden		1	1	0.0%
Out of County	100	539	639	11.5%
Palo Alto	2	21	23	0.4%
San Jose	280	1893	2173	39.1%
San Martin	8	20	28	0.5%
Santa Clara	25	106	131	2.4%
Saratoga	2	6	8	0.1%
Sunnyvale	10	73	83	1.5%
Transient	53	734	787	14.2%
Unknown	3	32	35	0.6%
Total	681	4872	5553	100.0%

By City - 25-34 Age Group*				
By City	F	M	Total	%
Alviso	1		1	0.0%
Campbell	3	22	25	1.2%
Cupertino		3	3	0.1%
Gilroy	7	61	68	3.3%
In Custody	76	417	493	24.1%
INS Deported		12	12	0.6%
Los Gatos		4	4	0.2%
Milpitas	1	20	21	1.0%
Morgan Hill	4	12	16	0.8%
Mountain View	2	18	20	1.0%
Out of County	41	232	273	13.4%
Palo Alto	1	9	10	0.5%
San Jose	123	643	766	37.5%
San Martin	3	7	10	0.5%
Santa Clara	11	46	57	2.8%
Saratoga	1	1	2	0.1%
Sunnyvale	4	22	26	1.3%
Transient	19	205	224	11.0%
Unknown	2	10	12	0.6%
Total	299	1744	2043	100.0%

* Based on client's address as of report run date



PRCS / 1170h MS Released 2011-10 to 2017-12

* By City/ Zip - All Age Groups					
By City	Zip	F	M	Total	%
Alviso	95002	1	2	3	0.1%
Campbell	95008	7	54	61	1.1%
	Unknown		2	2	0.0%
Cupertino	95014	1	12	13	0.2%
Gilroy	95020	26	170	196	3.5%
	Unknown		5	5	0.1%
Hospitalized			2	2	0.0%
In Custody		137	974	1111	20.0%
INS Custody			3	3	0.1%
INS Departed		1	36	37	0.7%
Los Altos	94022	2	3	5	0.1%
	94024		2	2	0.0%
Los Gatos	95030	1	1	2	0.0%
	95032	1	10	11	0.2%
	95033	1	6	7	0.1%
Milpitas	95035	7	62	69	1.2%
	Unknown		3	3	0.1%
Morgan Hill	95037	6	53	59	1.1%
	Unknown	3	6	9	0.2%
Mountain View	94035		1	1	0.0%
	94040	3	10	13	0.2%
	94041		6	6	0.1%
	94043	1	20	21	0.4%
	Unknown		4	4	0.1%
New Almaden	95042		1	1	0.0%
Out of County		100	539	639	11.5%
Palo Alto	94301		3	3	0.1%
	94303	1	2	3	0.1%
	94304		1	1	0.0%
	94306	1	15	16	0.3%
San Jose	95101		1	1	0.0%
	95110	16	78	94	1.7%
	95111	17	137	154	2.8%
	95112	28	237	265	4.8%
	95113		8	8	0.1%
	95116	26	182	208	3.7%
	95117	10	36	46	0.8%
	95118	6	38	44	0.8%
	95119	5	8	13	0.2%
	95120	1	11	12	0.2%
	95121	12	98	110	2.0%
	95122	23	149	172	3.1%
	95123	17	117	134	2.4%
	95124	1	49	50	0.9%
	95125	16	87	103	1.9%
	95126	8	79	87	1.6%
	95127	23	171	194	3.5%
	95128	15	58	73	1.3%
	95129	3	12	15	0.3%
	95130		10	10	0.2%
	95131	4	30	34	0.6%
	95132	6	46	52	0.9%
	95133	2	51	53	1.0%
	95134	3	12	15	0.3%
	95135		12	12	0.2%
	95136	13	63	76	1.4%
	95138	8	17	25	0.5%
	95139	2	13	15	0.3%
	95148	12	63	75	1.4%
	95157		1	1	0.0%
	95158		1	1	0.0%
	Unknown	3	18	21	0.4%

By City/ Zip - All Age Groups					
By City	Zip	F	M	Total	%
San Martin	95046	8	20	28	0.5%
Santa Clara	95050	6	52	58	1.0%
	95051	11	36	47	0.8%
	95054	7	15	22	0.4%
	95056		1	1	0.0%
	Unknown	1	2	3	0.1%
Saratoga	95070	2	4	6	0.1%
	Unknown		2	2	0.0%
Sunnyvale	94085	1	20	21	0.4%
	94086	1	24	25	0.5%
	94087	2	14	16	0.3%
	94088		1	1	0.0%
	94089	5	12	17	0.3%
	Unknown	1	2	3	0.1%
Transient		53	734	787	14.2%
Unknown		3	32	35	0.6%
Total		681	4872	5553	100.0%

Transient By Supervision				
Supervision	F	M	Total	%
1170h MS	33	178	211	26.8%
PRCS	20	556	576	73.2%
Total	53	734	787	100.0%

Transient By Age					
Age	F	M	Total	%	
18 - 24		3	50	53	6.7%
25 - 34		19	205	224	28.5%
35 - 44		17	221	238	30.2%
45 - 54		11	187	198	25.2%
55+		3	71	74	9.4%
Total	53	734	787	100.0%	

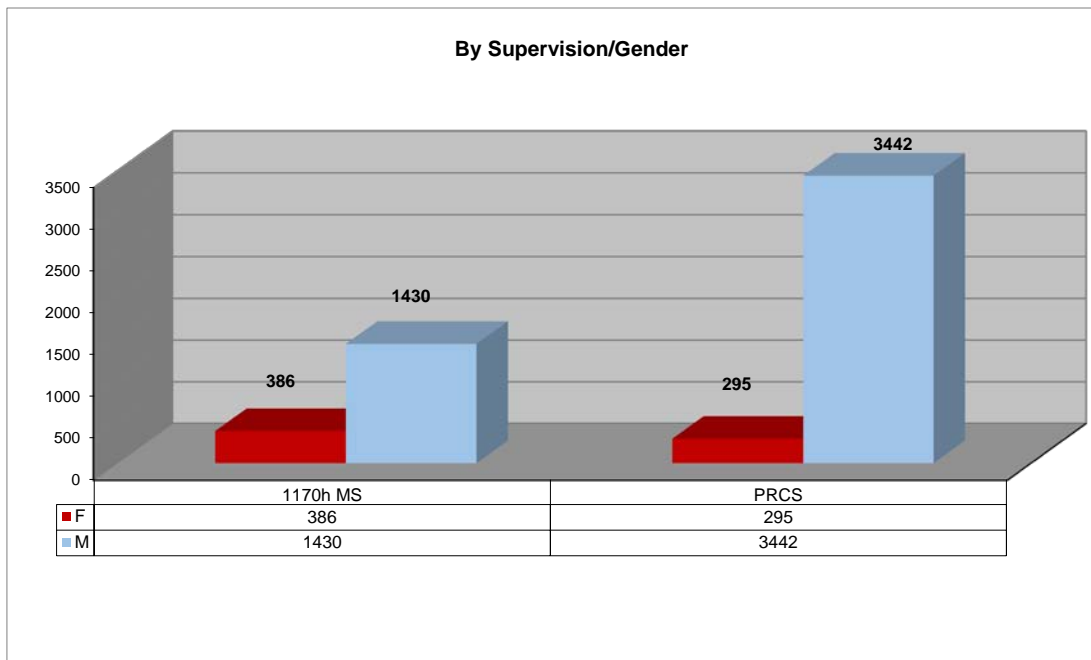
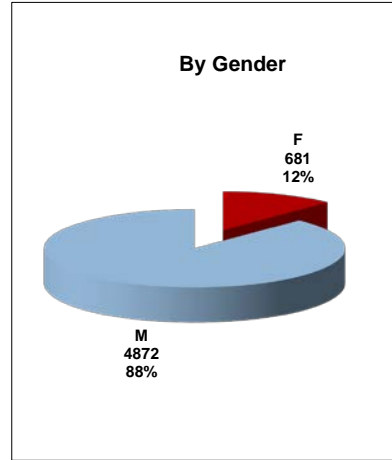
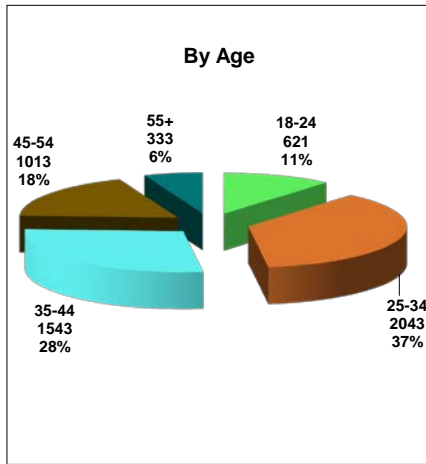
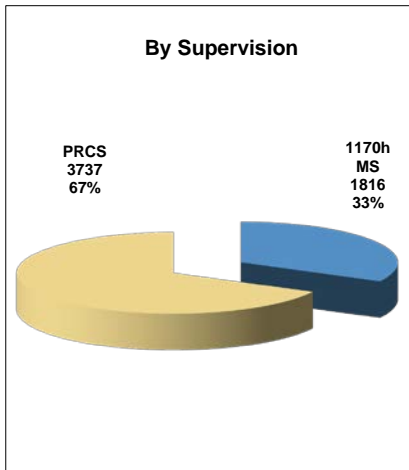
Transient By Ethnicity				
Ethnicity	F	M	Total	%
AMERICAN INDIAN		2	2	0.3%
ASIAN INDIAN		3	3	0.4%
BLACK	7	110	117	14.9%
CAMBODIAN	0	0	0	0.0%
CAUCASIAN	19	203	222	28.2%
CHINESE		1	1	0.1%
FILIPINO	1	8	9	1.1%
HAWAIIAN	0	0	0	0.0%
HISPANIC	21	366	387	49.2%
KOREAN		4	4	0.5%
LAOTIAN	0	0	0	0.0%
OTHER		4	4	0.5%
OTHER ASIAN	2	11	13	1.7%
PACIFIC ISLANDER	1	2	3	0.4%
SAMOAN	0	0	0	0.0%
VIETNAMESE	2	20	22	2.8%
Total	53	734	787	100.0%

Transient Break down				
	F	M	Total	%
Currently Homeless	36	401	437	55.5%
Homeless-Shelter	7	94	101	12.8%
Homeless -Streets/	10	239	249	31.6%
Total	53	734	787	100.0%

* Based on client's address as of report run date

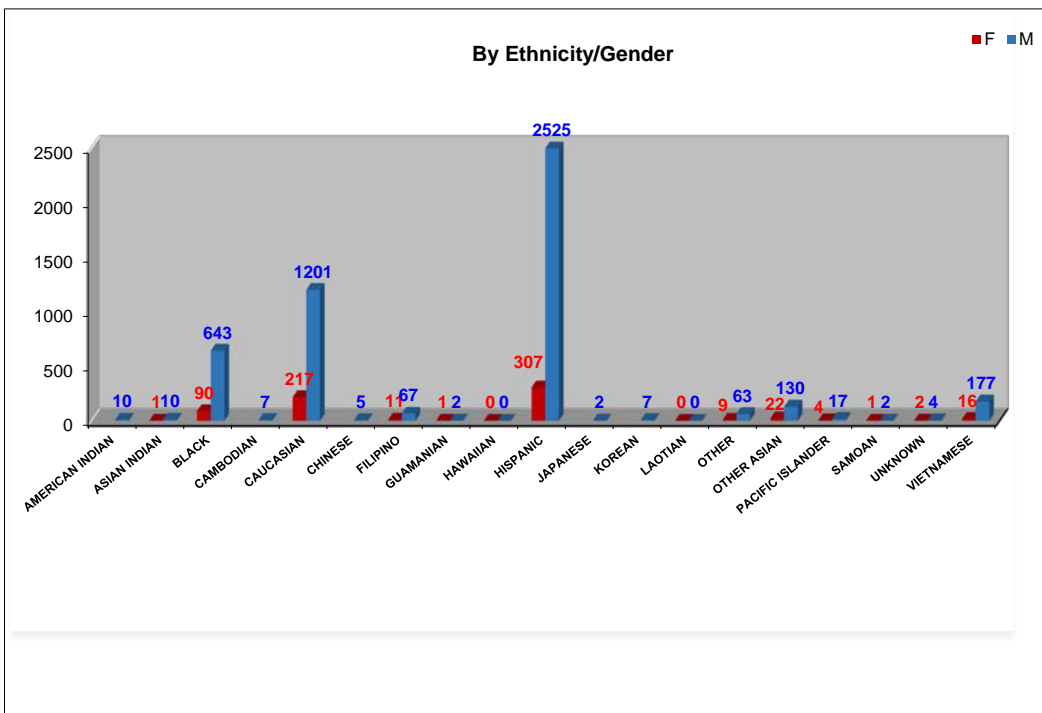
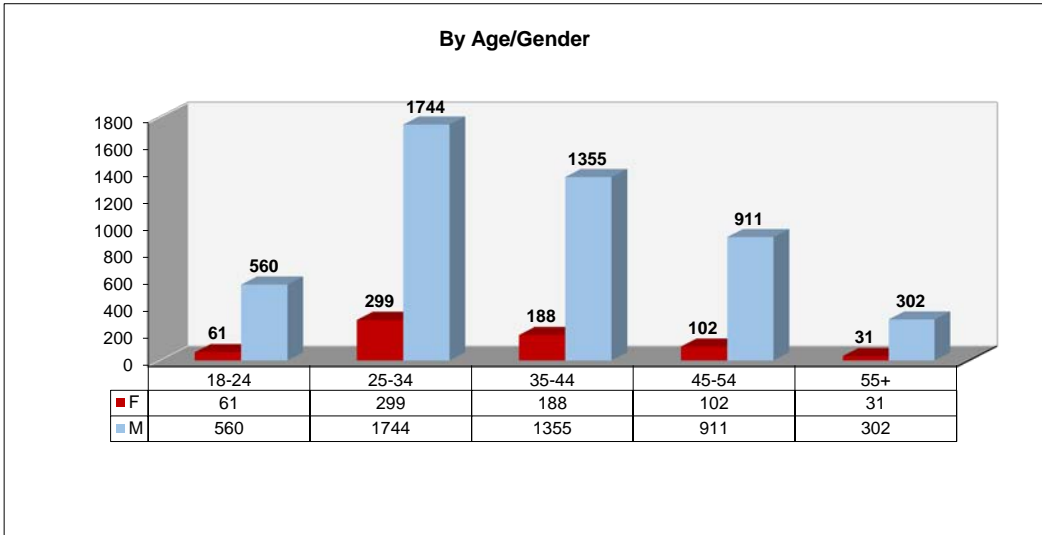


PRCS / 1170h MS Released 2011-10 to 2017-12





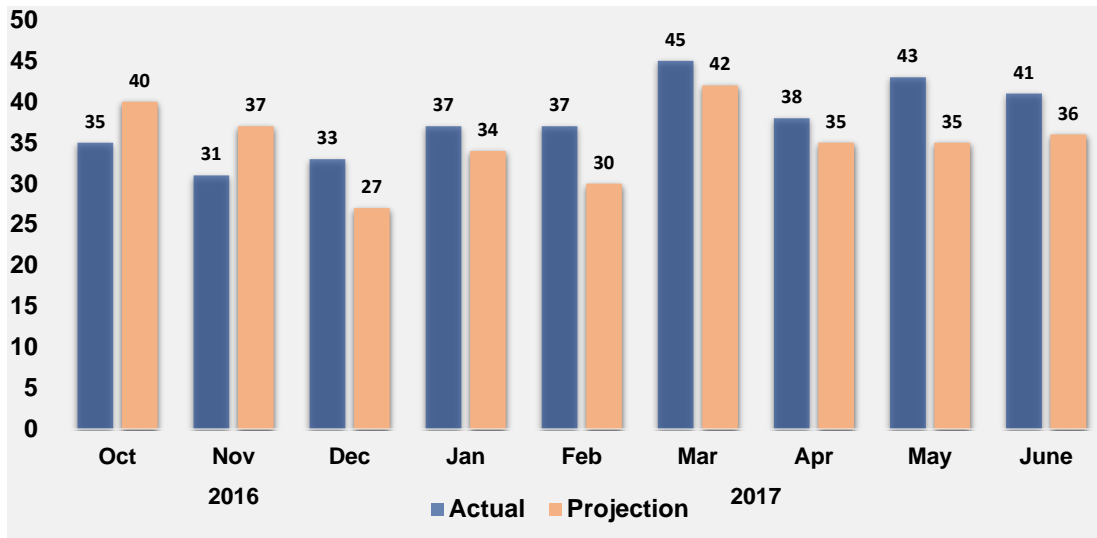
PRCS / 1170h MS Released 2011-10 to 2017-12





CDCR Projected PRCS Releases vs. Actuals 2016-10 to 2017-06

Year	Month	Actual	Projection	Difference-Count	Difference-%
2016	Oct	35	40	-5	-13%
	Nov	31	37	-6	-16%
	Dec	33	27	6	22%
2017	Jan	37	34	3	9%
	Feb	37	30	7	23%
	Mar	45	42	3	7%
	Apr	38	35	3	9%
	May	43	35	8	23%
	June	41	36	5	14%
TOTAL		340	316	24	8%



Note: Projection data is not available from July 2017 at CPOC