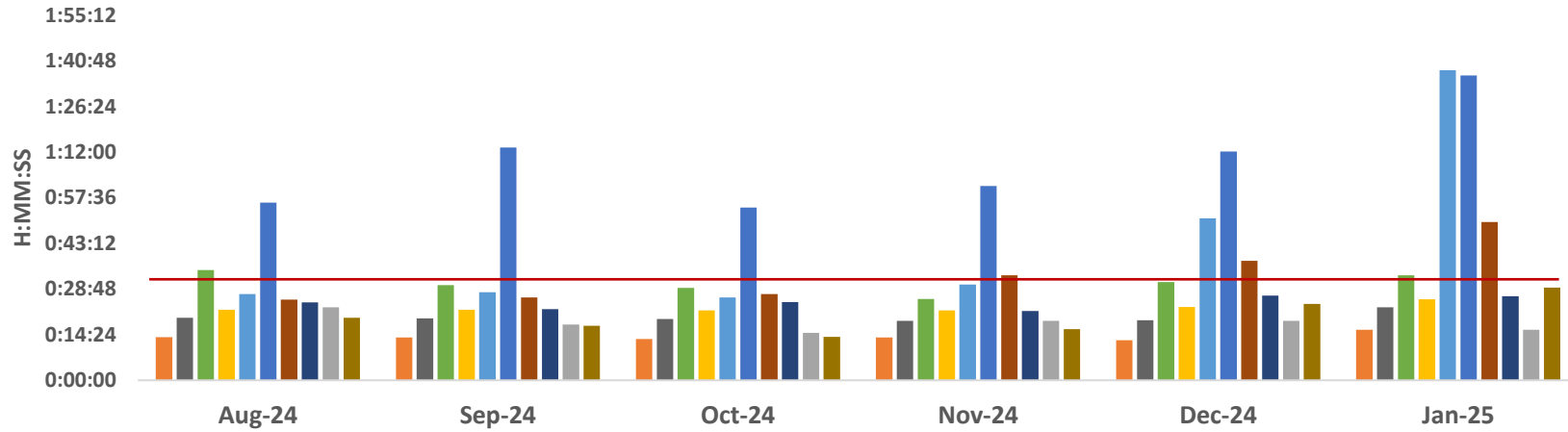


Ambulance Patient Offload Time (APOT) - 90th Percentile



	Aug-24	Sep-24	Oct-24	Nov-24	Dec-24	Jan-25
SHC	0:13:34	0:13:32	0:13:01	0:13:30	0:12:40	0:15:55
ECH	0:19:44	0:19:33	0:19:23	0:18:47	0:19:00	0:23:01
KSC	0:34:49	0:30:02	0:29:08	0:25:38	0:31:01	0:33:09
RMC	0:22:14	0:22:16	0:22:06	0:22:01	0:23:10	0:25:31
OCH	0:27:15	0:27:46	0:26:06	0:30:11	0:51:09	1:37:52
VMC	0:56:06	1:13:26	0:54:34	1:01:19	1:12:11	1:36:11
GSH	0:25:30	0:26:06	0:27:15	0:33:09	0:37:44	0:49:58
KSJ	0:24:38	0:22:29	0:24:43	0:21:51	0:26:45	0:26:34
SLH	0:23:04	0:17:37	0:14:56	0:18:44	0:18:47	0:15:59
LGH	0:19:44	0:17:10	0:13:42	0:16:08	0:24:09	0:29:17

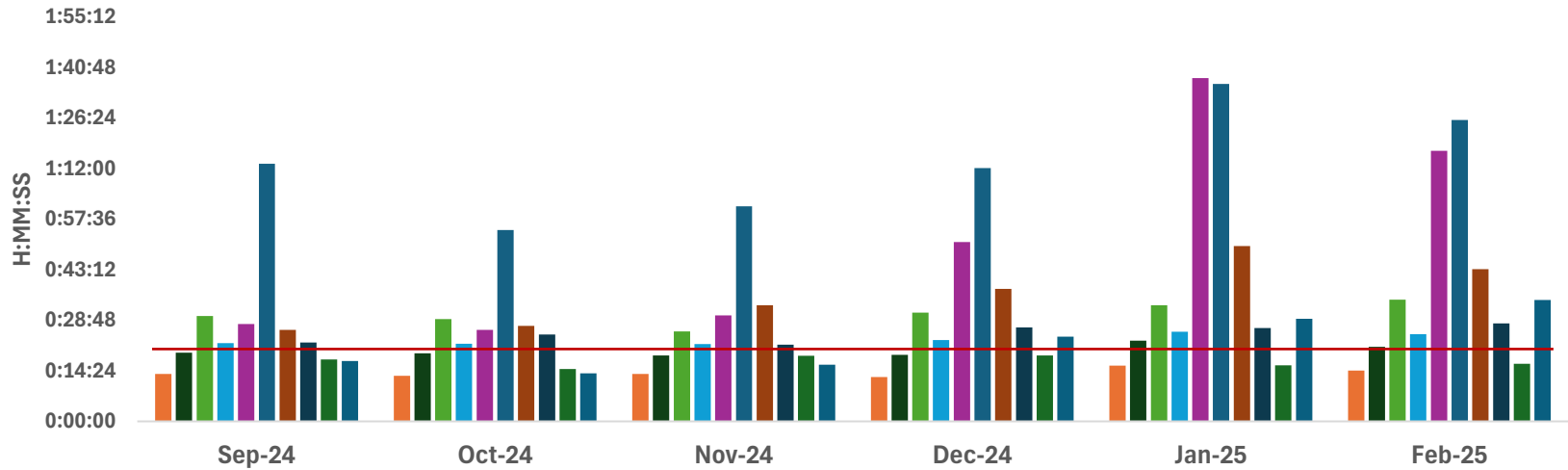
■ SHC
 ■ ECH
 ■ KSC
 ■ RMC
 ■ OCH
 ■ VMC
 ■ GSH
 ■ KSJ
 ■ SLH
 ■ LGH

	SHC	ECH	KSC	RMC	OCH	VMC	GSH	KSJ	SLH	LGH
Aug-24	0:13:34	0:19:44	0:34:49	0:22:14	0:27:15	0:56:06	0:25:30	0:24:38	0:23:04	0:19:44
Sep-24	0:13:32	0:19:33	0:30:02	0:22:16	0:27:46	1:13:26	0:26:06	0:22:29	0:17:37	0:17:10
Oct-24	0:13:01	0:19:23	0:29:08	0:22:06	0:26:06	0:54:34	0:27:15	0:24:43	0:14:56	0:13:42
Nov-24	0:13:30	0:18:47	0:25:38	0:22:01	0:30:11	1:01:19	0:33:09	0:21:51	0:18:44	0:16:08
Dec-24	0:12:40	0:19:00	0:31:01	0:23:10	0:51:09	1:12:11	0:37:44	0:26:45	0:18:47	0:24:09
Jan-25	0:15:55	0:23:01	0:33:09	0:25:31	1:37:52	1:36:11	0:49:58	0:26:34	0:15:59	0:29:17

APOT 2 -Jan 2025

	≤ 20 minutes	21-60 minutes	61-120 minutes	121-180 minutes	>180 minutes	Total Patients
SHC	732 95.4%	35 4.6%	0 0.0%	0 0.0%	0 0.0%	767
ECH	828 86.6%	126 13.2%	2 0.2%	0 0.0%	0 0.0%	956
KSC	608 66.8%	296 32.5%	5 0.5%	1 0.1%	0 0.0%	910
RMC	962 84.2%	174 15.2%	5 0.4%	1 0.1%	0 0.0%	1142
OCH	625 53.6%	335 28.7%	127 10.9%	57 4.9%	22 1.9%	1166
VMC	828 61.3%	287 21.3%	146 10.8%	63 4.7%	26 1.9%	1350
GSH	740 62.7%	351 29.7%	66 5.6%	24 2.0%	0 0.0%	1181
KSJ	702 80.0%	171 19.5%	4 0.5%	0 0.0%	0 0.0%	877
SLH	435 95.0%	19 4.1%	4 0.9%	0 0.0%	0 0.0%	458
LGH	184 87.6%	18 8.6%	6 2.9%	2 1.0%	0 0.0%	210
TOTAL	6644 73.7%	1812 20.1%	365 4.0%	148 1.6%	48 0.5%	9017

Ambulance Patient Offload Time (APOT) - 90th Percentile



	Sep-24	Oct-24	Nov-24	Dec-24	Jan-25	Feb-25
SHC	0:13:32	0:13:01	0:13:30	0:12:40	0:15:55	0:14:31
ECH	0:19:33	0:19:23	0:18:47	0:19:00	0:23:01	0:21:17
KSC	0:30:02	0:29:08	0:25:38	0:31:01	0:33:09	0:34:42
RMC	0:22:16	0:22:06	0:22:01	0:23:10	0:25:31	0:24:49
OCH	0:27:46	0:26:06	0:30:11	0:51:09	1:37:52	1:17:09
VMC	1:13:26	0:54:34	1:01:19	1:12:11	1:36:11	1:25:56
GSH	0:26:06	0:27:15	0:33:09	0:37:44	0:49:58	0:43:24
KSJ	0:22:29	0:24:43	0:21:51	0:26:45	0:26:34	0:27:57
SLH	0:17:37	0:14:56	0:18:44	0:18:47	0:15:59	0:16:24
LGH	0:17:10	0:13:42	0:16:08	0:24:09	0:29:17	0:34:35

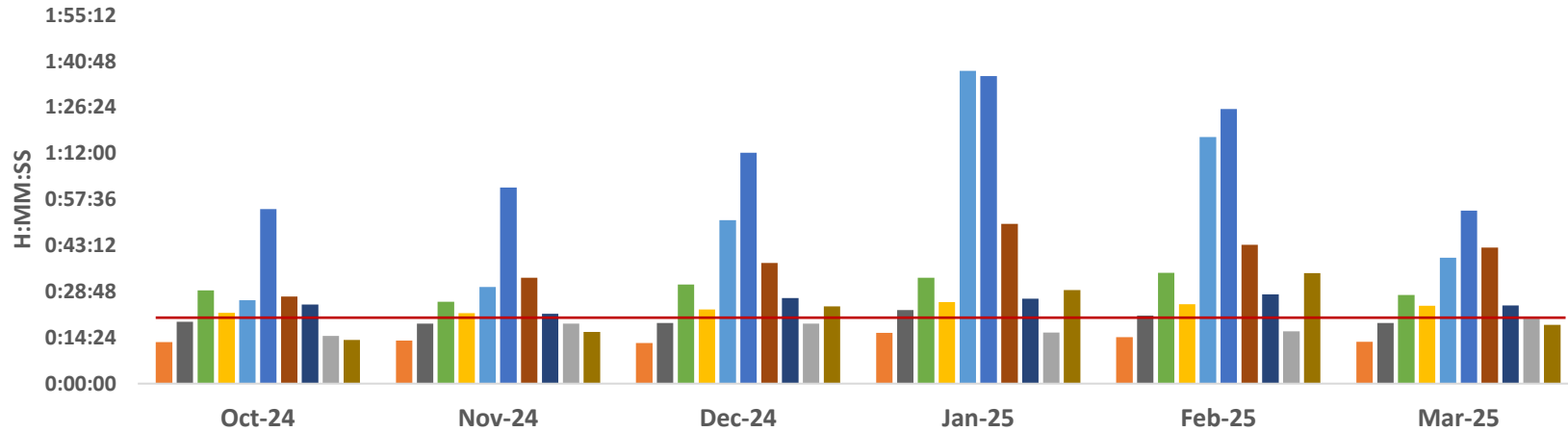
■ SHC
 ■ ECH
 ■ KSC
 ■ RMC
 ■ OCH
 ■ VMC
 ■ GSH
 ■ KSJ
 ■ SLH
 ■ LGH

	SHC	ECH	KSC	RMC	OCH	VMC	GSH	KSJ	SLH	LGH
Sep-24	0:13:32	0:19:33	0:30:02	0:22:16	0:27:46	1:13:26	0:26:06	0:22:29	0:17:37	0:17:10
Oct-24	0:13:01	0:19:23	0:29:08	0:22:06	0:26:06	0:54:34	0:27:15	0:24:43	0:14:56	0:13:42
Nov-24	0:13:30	0:18:47	0:25:38	0:22:01	0:30:11	1:01:19	0:33:09	0:21:51	0:18:44	0:16:08
Dec-24	0:12:40	0:19:00	0:31:01	0:23:10	0:51:09	1:12:11	0:37:44	0:26:45	0:18:47	0:24:09
Jan-25	0:15:55	0:23:01	0:33:09	0:25:31	1:37:52	1:36:11	0:49:58	0:26:34	0:15:59	0:29:17
Feb-25	0:14:31	0:21:17	0:34:42	0:24:49	1:17:09	1:25:56	0:43:24	0:27:57	0:16:24	0:34:35

APOT 2 -Feb 2025

	≤ 20 minutes	21-60 minutes	61-120 minutes	121-180 minutes	>180 minutes	Total Patients
SHC	592 95.8%	26 4.2%	0 0.0%	0 0.0%	0 0.0%	618
ECH	770 89.6%	89 10.4%	0 0.0%	0 0.0%	0 0.0%	859
KSC	513 65.6%	258 33.0%	11 1.4%	0 0.0%	0 0.0%	782
RMC	909 84.4%	159 14.8%	8 0.7%	1 0.1%	0 0.0%	1077
OCH	552 54.4%	316 31.1%	105 10.3%	26 2.6%	16 1.6%	1015
VMC	778 62.0%	284 22.6%	134 10.7%	34 2.7%	24 1.9%	1254
GSH	598 60.4%	356 36.0%	34 3.4%	1 0.1%	1 0.1%	990
KSJ	639 81.0%	142 18.0%	8 1.0%	0 0.0%	0 0.0%	789
SLH	366 95.6%	17 4.4%	0 0.0%	0 0.0%	0 0.0%	383
LGH	131 85.6%	13 8.5%	9 5.9%	0 0.0%	0 0.0%	153
TOTAL	5848 73.8%	1660 21.0%	309 3.9%	62 0.8%	41 0.5%	7920

Ambulance Patient Offload Time (APOT) - 90th Percentile



	Oct-24	Nov-24	Dec-24	Jan-25	Feb-25	Mar-25
SHC	0:13:01	0:13:30	0:12:40	0:15:55	0:14:31	0:13:06
ECH	0:19:23	0:18:47	0:19:00	0:23:01	0:21:17	0:19:00
KSC	0:29:08	0:25:38	0:31:01	0:33:09	0:34:42	0:27:42
RMC	0:22:06	0:22:01	0:23:10	0:25:31	0:24:49	0:24:23
OCH	0:26:06	0:30:11	0:51:09	1:37:52	1:17:09	0:39:23
VMC	0:54:34	1:01:19	1:12:11	1:36:11	1:25:56	0:54:05
GSH	0:27:15	0:33:09	0:37:44	0:49:58	0:43:24	0:42:32
KSJ	0:24:43	0:21:51	0:26:45	0:26:34	0:27:57	0:24:26
SLH	0:14:56	0:18:44	0:18:47	0:15:59	0:16:24	0:20:21
LGH	0:13:42	0:16:08	0:24:09	0:29:17	0:34:35	0:18:22

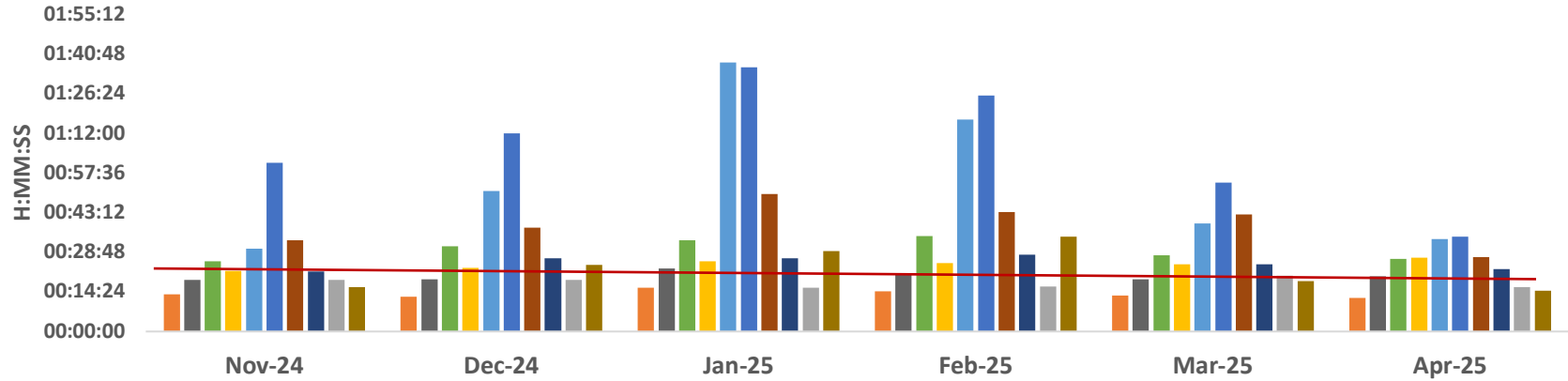
■ SHC
 ■ ECH
 ■ KSC
 ■ RMC
 ■ OCH
 ■ VMC
 ■ GSH
 ■ KSJ
 ■ SLH
 ■ LGH

	SHC	ECH	KSC	RMC	OCH	VMC	GSH	KSJ	SLH	LGH
Oct-24	0:13:01	0:19:23	0:29:08	0:22:06	0:26:06	0:54:34	0:27:15	0:24:43	0:14:56	0:13:42
Nov-24	0:13:30	0:18:47	0:25:38	0:22:01	0:30:11	1:01:19	0:33:09	0:21:51	0:18:44	0:16:08
Dec-24	0:12:40	0:19:00	0:31:01	0:23:10	0:51:09	1:12:11	0:37:44	0:26:45	0:18:47	0:24:09
Jan-25	0:15:55	0:23:01	0:33:09	0:25:31	1:37:52	1:36:11	0:49:58	0:26:34	0:15:59	0:29:17
Feb-25	0:14:31	0:21:17	0:34:42	0:24:49	1:17:09	1:25:56	0:43:24	0:27:57	0:16:24	0:34:35
Mar-25	0:13:06	0:19:00	0:27:42	0:24:23	0:39:23	0:54:05	0:42:32	0:24:26	0:20:21	0:18:22

APOT 2 -Mar 2025

	≤ 20 minutes	21-60 minutes	61-120 minutes	121-180 minutes	>180 minutes	Total Patients
SHC	654 97.2%	19 2.8%	0 0.0%	0 0.0%	0 0.0%	673
ECH	764 92.9%	58 7.1%	0 0.0%	0 0.0%	0 0.0%	822
KSC	671 75.6%	215 24.2%	1 0.1%	0 0.0%	0 0.0%	887
RMC	920 86.4%	136 12.8%	9 0.8%	0 0.0%	0 0.0%	1065
OCH	816 65.6%	384 30.9%	39 3.1%	3 0.2%	2 0.2%	1244
VMC	915 69.3%	290 22.0%	87 6.6%	26 2.0%	2 0.2%	1320
GSH	672 62.2%	366 33.9%	37 3.4%	5 0.5%	0 0.0%	1080
KSJ	725 84.9%	127 14.9%	1 0.1%	1 0.1%	0 0.0%	854
SLH	431 90.9%	43 9.1%	0 0.0%	0 0.0%	0 0.0%	474
LGH	174 92.1%	12 6.3%	3 1.6%	0 0.0%	0 0.0%	189
TOTAL	6742 78.3%	1650 19.2%	177 2.1%	35 0.4%	4 0.0%	8608

Ambulance Patient Offload Time (APOT) - 90th Percentile



	Nov-24	Dec-24	Jan-25	Feb-25	Mar-25	Apr-25
SHC	00:13:30	00:12:40	00:15:55	00:14:31	00:13:06	00:12:19
ECH	00:18:47	00:19:00	00:23:01	00:21:17	00:19:00	00:19:59
KSC	00:25:38	00:31:01	00:33:09	00:34:42	00:27:42	00:26:24
RMC	00:22:01	00:23:10	00:25:31	00:24:49	00:24:23	00:26:51
OCH	00:30:11	00:51:09	01:37:52	01:17:09	00:39:23	00:33:40
VMC	01:01:19	01:12:11	01:36:11	01:25:56	00:54:05	00:34:28
GSH	00:33:09	00:37:44	00:49:58	00:43:24	00:42:32	00:27:07
KSJ	00:21:51	00:26:45	00:26:34	00:27:57	00:24:26	00:22:39
SLH	00:18:44	00:18:47	00:15:59	00:16:24	00:20:21	00:16:10
LGH	00:16:08	00:24:09	00:29:17	00:34:35	00:18:22	00:14:47

SHC ECH KSC RMC OCH VMC GSH KSJ SLH LGH

	SHC	ECH	KSC	RMC	OCH	VMC	GSH	KSJ	SLH	LGH
Nov-24	00:13:30	00:18:47	00:25:38	00:22:01	00:30:11	01:01:19	00:33:09	00:21:51	00:18:44	00:16:08
Dec-24	00:12:40	00:19:00	00:31:01	00:23:10	00:51:09	01:12:11	00:37:44	00:26:45	00:18:47	00:24:09
Jan-25	00:15:55	00:23:01	00:33:09	00:25:31	01:37:52	01:36:11	00:49:58	00:26:34	00:15:59	00:29:17
Feb-25	00:14:31	00:21:17	00:34:42	00:24:49	01:17:09	01:25:56	00:43:24	00:27:57	00:16:24	00:34:35
Mar-25	00:13:06	00:19:00	00:27:42	00:24:23	00:39:20	00:54:01	00:42:43	00:24:26	00:20:21	00:18:20
Apr-25	00:12:19	00:19:59	00:26:24	00:26:51	00:33:40	00:34:28	00:27:07	00:22:39	00:16:10	00:14:47

APOT 2 -Apr 2025

	≤ 20 minutes	21-60 minutes	61-120 minutes	121-180 minutes	>180 minutes	Total Patients
SHC	660 96.8%	22 3.2%	0 0.0%	0 0.0%	0 0.0%	682
ECH	721 91.4%	68 8.6%	0 0.0%	0 0.0%	0 0.0%	789
KSC	633 78.1%	177 21.8%	1 0.1%	0 0.0%	0 0.0%	811
RMC	1072 83.0%	183 14.2%	30 2.3%	5 0.4%	1 0.1%	1291
OCH	758 76.6%	206 20.8%	23 2.3%	3 0.3%	0 0.0%	990
VMC	838 79.0%	186 17.5%	31 2.9%	6 0.6%	0 0.0%	1061
GSH	723 80.5%	168 18.7%	7 0.8%	0 0.0%	0 0.0%	898
KSJ	686 87.5%	96 12.2%	2 0.3%	0 0.0%	0 0.0%	784
SLH	412 92.8%	32 7.2%	0 0.0%	0 0.0%	0 0.0%	444
LGH	160 92.5%	11 6.4%	2 1.2%	0 0.0%	0 0.0%	173
TOTAL	6663 84.1%	1149 14.5%	96 1.2%	14 0.2%	1 0.0%	7923