



Welcome to YHDP in
Santa Clara County



Welcome
Land Acknowledgement

Group Agreements

- ▶ Create Authentic and Trusting Spaces for Young Leaders to Lead
- ▶ Take space, leave space
- ▶ Seek to understand both intent and impact.
- ▶ Push to think outside the box and inquire with grace and kindness
- ▶ Active participation & active listening.
- ▶ Talk about it and Be about it - moving to action
- ▶ Conceive of call ins as an act of love and accountability
- ▶ Listen to understand and not just respond
- ▶ This is a community-led, collaborative decision-making process
- ▶ Acknowledge & honor that equity conversations require emotional labor for people of color and LGBTQ folx.
- ▶ Acknowledge & honor that there is emotional labor required of people with lived expertise in these conversations. Use person first language

Who is in the Building

- ▶ In the Chat
- ▶ Name, Pronouns, Agency



**Call to Action for Addressing
and Ending Youth Homelessness**

Your Technical Assistant (TA) Providers



Monique Jackson
(she/her) CSH

Dee Balliet
(they/them)
TCU



Derek Wentorf
(he/him) CSH



Hannah Roberts
(she/her)
CSH

Agenda

- ▶ What is Governance
- ▶ Current YAB Governance
- ▶ Your Local Continuum of Care Governance
- ▶ Governance discussion and recommendations
- ▶ Next Steps: Introduction to System Modeling/Sunday Retreats



GOVERNANCE

What is Governance?

- ▶ The agreements, rules, processes, or policies that guide or direct a group of people, often providing written standards and oversight on how they make decisions and carry out their work or activities
- ▶ Not all governance structures are the same! Cities and counties, corporate boards, public schools, and homeless service systems all have their own forms of governance.
- ▶ Some forms of governance offer very few opportunities for public participation and decision-making and others offer lots.



Why does
governance feel
important?

Why Does Governance Matter

- ▶ Because we aim to do transformational work. Sharing power with young people requires changing the decision-making process and shifting the power within the community.
- ▶ Because solutions to homelessness are only effective when those most impacted are leading. This means we need to not only invite people to the table, but also redistribute decision-making power.
- ▶ Because a strong governance structure help you address the system level challenges that individual organizations, coalitions, and agencies are otherwise unequipped to address on their own.
- ▶ Because we can work more effectively when we work with transparency and everyone understands their role in the decision-making process.

HUD Requirements for CoCs and YHDP

The federal Continuum of Care (CoC) program requires communities create and write down a governance structure for how their communities make decisions about homelessness.

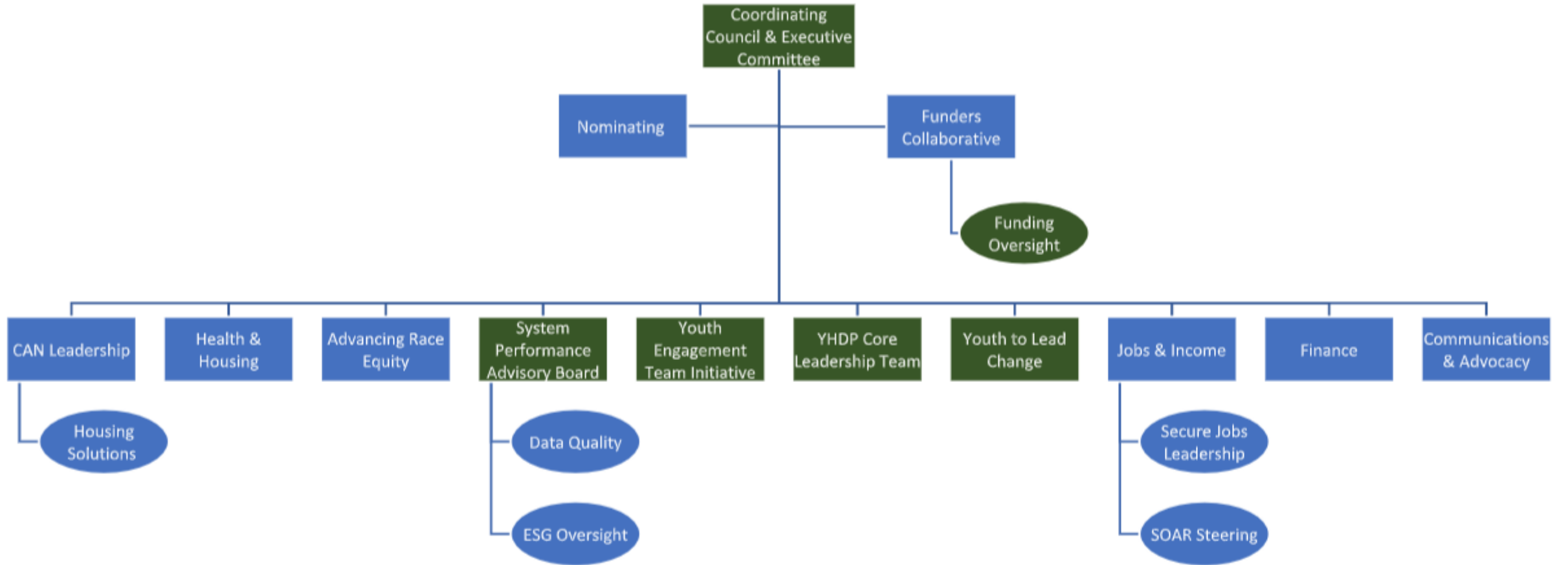
Your community is required to develop a governance structure and decision-making process for YHDP and include it in your Coordinated Community Plan (CCP). At a minimum, HUD will be looking for you to include an organization chart outlining the governance structure, including:

- ⌄ How decisions are made regarding YHDP funds
- ⌄ Who is involved in the decision-making



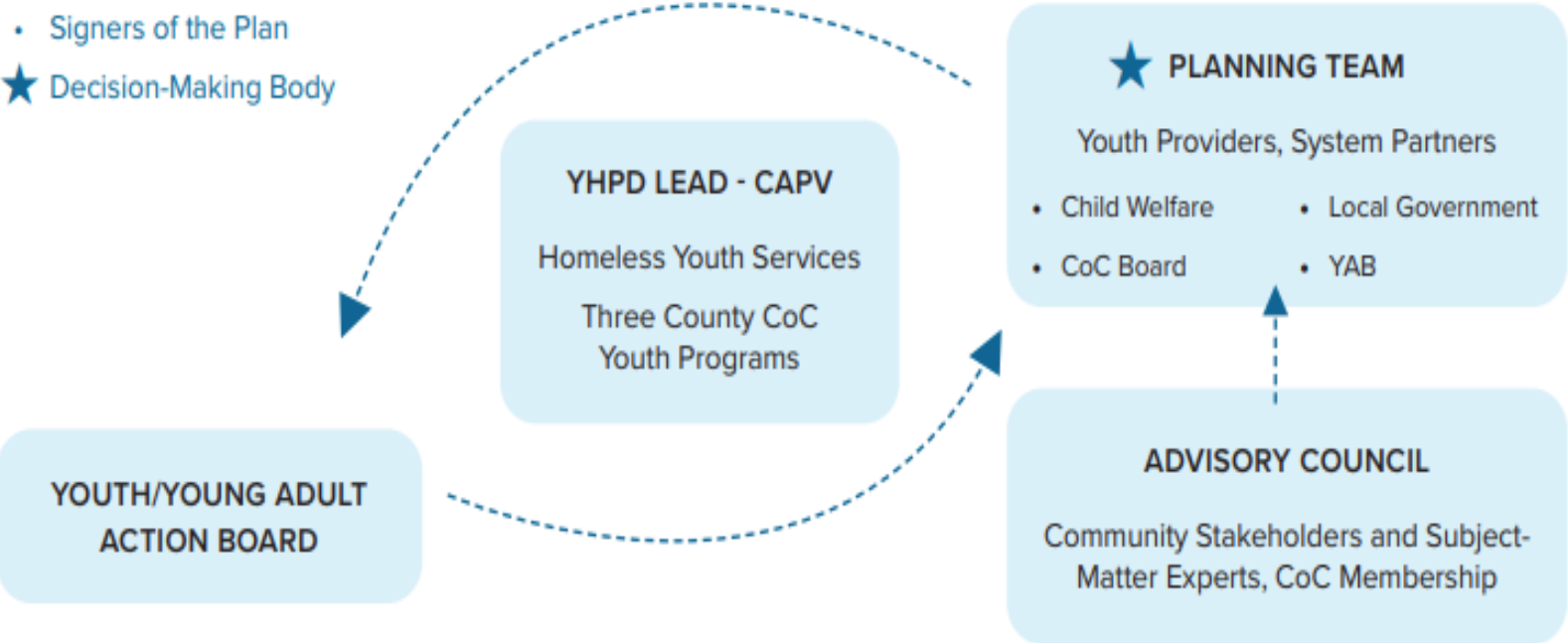
EXAMPLES

Fairfield County, CT: Continuum of Care Structure

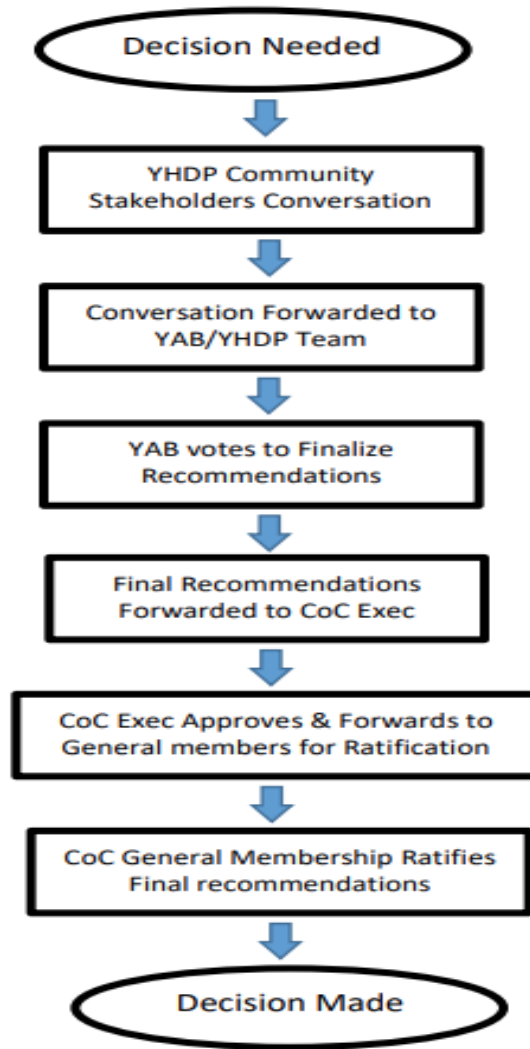


Franklin County: YHDP Governance

- Signers of the Plan
- ★ Decision-Making Body



Palm Beach County, FL: Decision Flowchart



For all matters that require a general agreement decision between the Youth Action Board (YAB), including how YHDP funds will be utilized, coordinated votes are held using the decision-making process.

On both the YAB and the CoC Executive Committee all matters are introduced by motion, require a second, and majority vote to implement. The two entities must come to a consensus with their votes in order for the matter to be passed.

While CoC Executive Committee and YAB meetings are open to the public, only CoC Executive Committee and YAB members are allowed to vote.



YAB GOVERNANCE

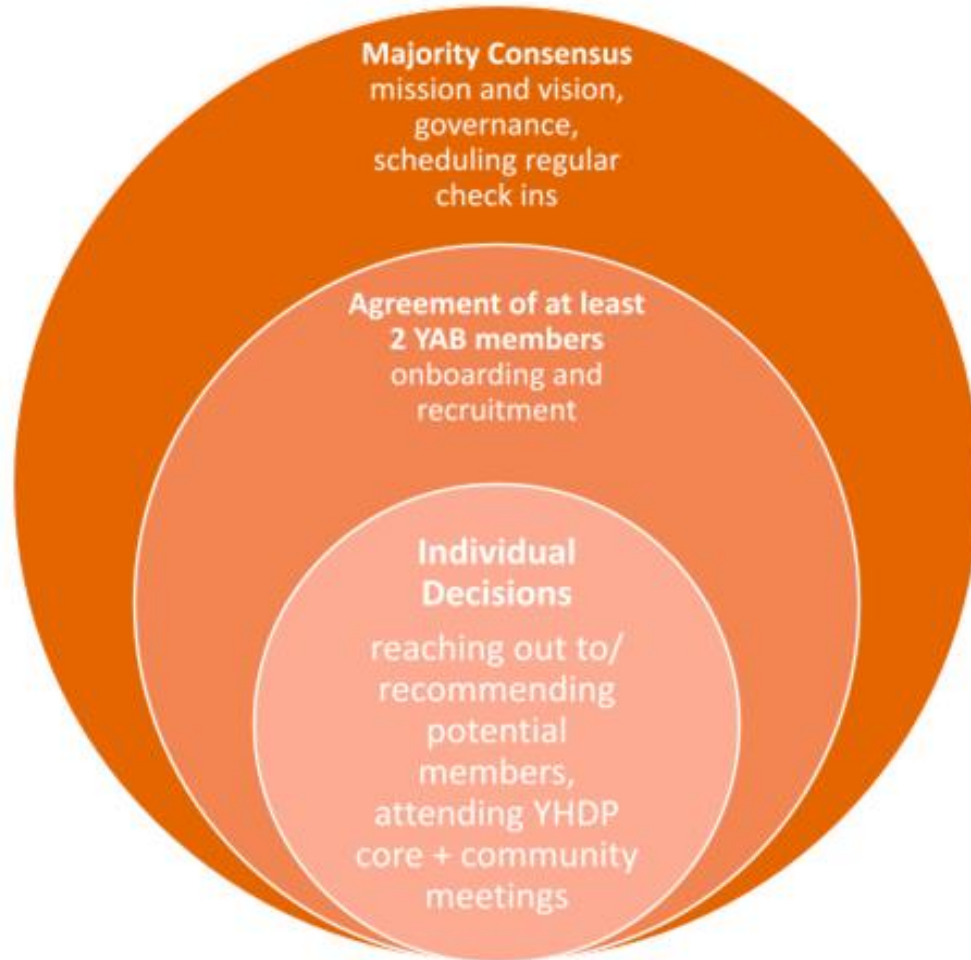
Governance Structure:

Santa Clara YAB currently has a Flat Leadership governance. Roles & responsibilities are equally divided among members and selected based on individual capacity.

Voting & Decision Making:

Majority consensus is required for votes affecting YAB & related YAB work, more specifically YHDP related work; further identified in Decision Making Flow Chart Visual.

YAB Decision Making Process Flow Visual





Santa Clara County
Continuum of Care

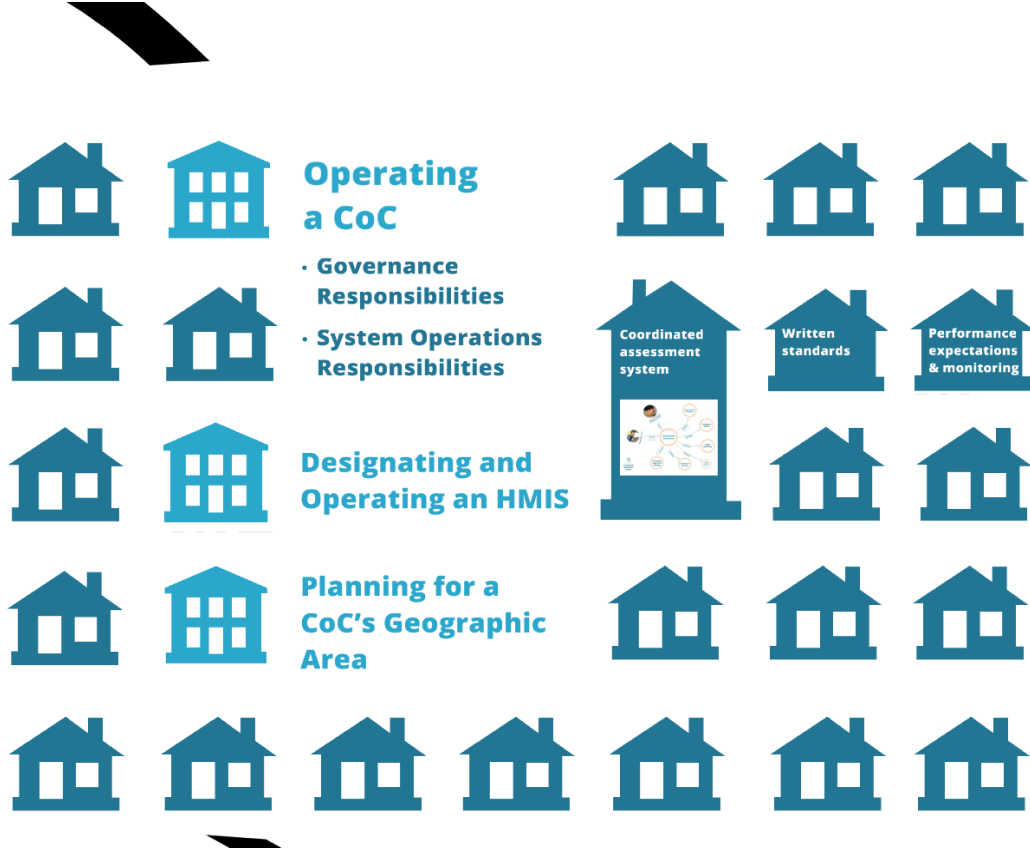


CoC Governance

What is the Continuum of Care?



CoC Responsibilities and Duties





Charter

CoC Governance Charter

Roles and Responsibilities of:

- CoC Membership
- CoC Board
- CoC Executive Committee
- CoC Workgroups
- Collaborative Applicant
- HMIS Administrator

Meeting Requirements

Conflict of Interest and Code of Conduct

Decision Making and Quorum

Santa Clara CoC Structure

CoC Membership

CoC Board

Collaborative Applicant (County OSH)

HMIS Lead (County OSH)

Coordinated
Assessment
Work Group

Service
Providers
Network

Performance
Management
Work Group

NOFA
Committee

Technical
Assistance
(HomeBase)

Software
Vendor
(Bitfocus)

System
Administrator
(Bitfocus)

Lived
Experience
Advisory Board

HMIS Admins
Subcommittee

Review and
Rank Panel



CoC Board

Board Membership

4 Ex-officio

- County of Santa Clara
- City of San José
- Housing Authority
- Destination: Home

3-7 At-large

- At least 1 with lived expertise (*proposed change to at least 3 members with lived expertise*)
- At least 2 representatives of service providing orgs in the CoC

CoC Operations

Collaborative Applicant

- ▶ CoC Administration
- ▶ CoC Program Application
- ▶ Performance Monitoring
- ▶ Coordinated Assessment
- ▶ CoC Planning

HMIS Lead

- ▶ Implementing the HMIS
- ▶ Maintaining HMIS documents:
 - ▶ Governance agreement
 - ▶ Security Plan
 - ▶ Privacy Plan
 - ▶ Data Quality Plan
 - ▶ Policies and Procedures

Monitoring compliance

Workgroups



- ▶ Coordinated Assessment Work Group
- ▶ Performance Management Work Group
- ▶ Lived Experience Advisory Board
- ▶ HMIS Administrators
- ▶ NOFA Committee
- ▶ Rank and Review Panel
- ▶ Service Provider Network

Example of CoC Structure with YHDP

CoC

CoC Board

Coordinate
d
Assessment
Work
Group

Lived
Experience
Advisory
Board

Service
Providers
Network

Perf Mgmt
Work
Group

HMIS
Admins
Subcomm

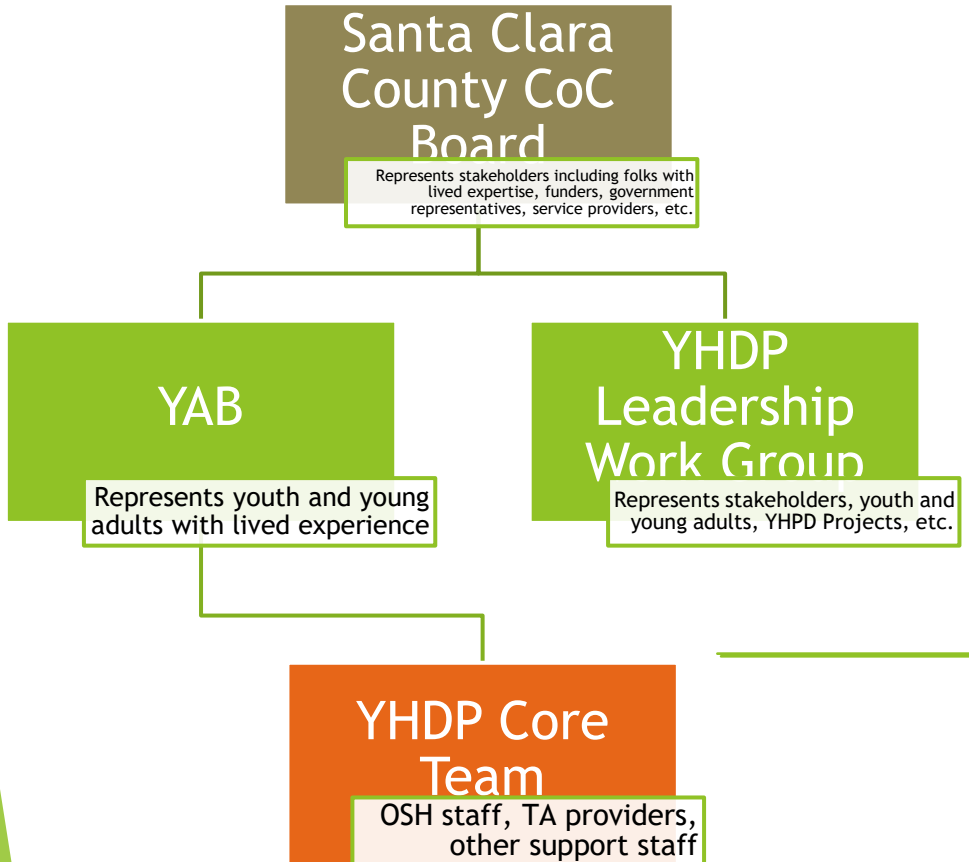
NOFA
Committee

Review and
Rank Panel

YHPD
Leadership

YAB

Example YHDP Governance Structure



Roles (Examples)

CoC Board

- Approves CCP before submittal to HUD
- Approves funding decisions

YAB

- Collaborates with YHDP leadership on CCP development and updates
- Approves CCP before submittal to CoC Board
- Participates in funding decisions

YHDP Leadership

- Collaborates with YAB on CCP development and updates
- Participates in other CoC work groups

YHDP Process Example



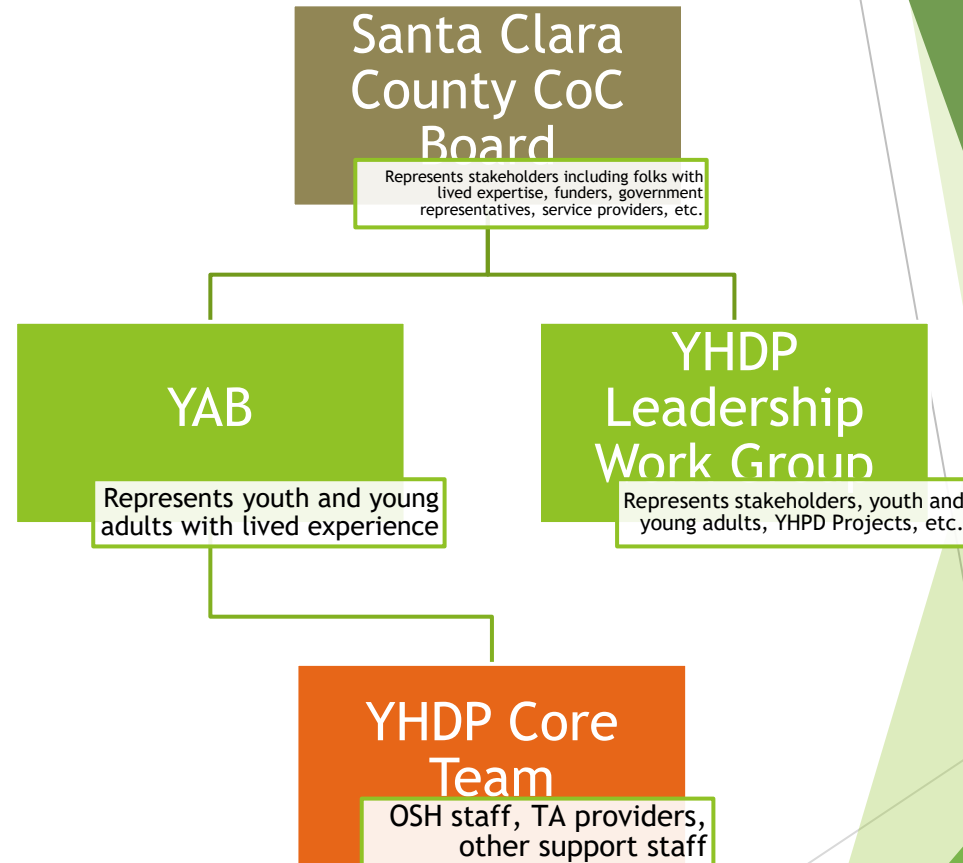
Questions?

The image features a central white space containing the word "Stretch" in a black, sans-serif font. This central area is surrounded by a complex, abstract pattern of green geometric shapes, including triangles and polygons, some of which are layered or overlapping. The colors range from a vibrant lime green to a darker forest green. The overall composition is modern and minimalist.

Stretch

Governance Discussion

- ▶ Does this structure make sense for Santa Clara County's YHDP effort?
- ▶ How can we be clear and transparent to the community?





Next Steps: System Modeling

What are we going to do?

Session	Topic
Retreat: Sunday, February 6 th , 11-4:30	System Modeling - Activities 1 - 3
Retreat: Sunday, February 13 th , 11-4:30	System Modeling - Activities 4 & 5
Monday Meetings	Develop required components of the Coordinated Community Plan (CCP): <ul style="list-style-type: none">• YHDP Governance Goals, Objectives, and Action Steps• YHDP Project Types• CCP Review and Approval

What is system modeling?

A process to describe the ideal system and estimate the type and amount of assistance needed to permanently house every unaccompanied youth and young adult experiencing and at risk of homelessness.

Youth Voice In System Modeling

- This process will not be effective or impactful if young people are not actively guiding it
- Work to uncover your ageist biases (what ways do you and the system you are working in limit young people's voice?)
- Communicate clearly and support each other through the learning process and shared planning

System Modeling Steps

“Ideal” System and Project Descriptions

Describe the “ideal system” and essential elements of homeless service system projects

System Map & Pathways

Create a system map with the pathways that young people will take towards housing stability and estimate the use of each pathway

Project Types, Percentages, and Length of Stay

Specify the projects in your system, what portion of young people will use which options, and the average length of time young people will stay in projects

Annual Data and Cost Estimates - Final Projections

Add data sources and cost estimates and review the final product estimating the total project inventory and cost to meet the needs of all young people

Activity 1: Envisioning the “Ideal” System and Essential Project Elements

UPSTREAM PREVENTION



FRONT PORCH

- Outreach
- In-reach
- Drop-in(s)
- Crisis Hotline(s)
- Front Door Diversion (aka Targeted Prevention)

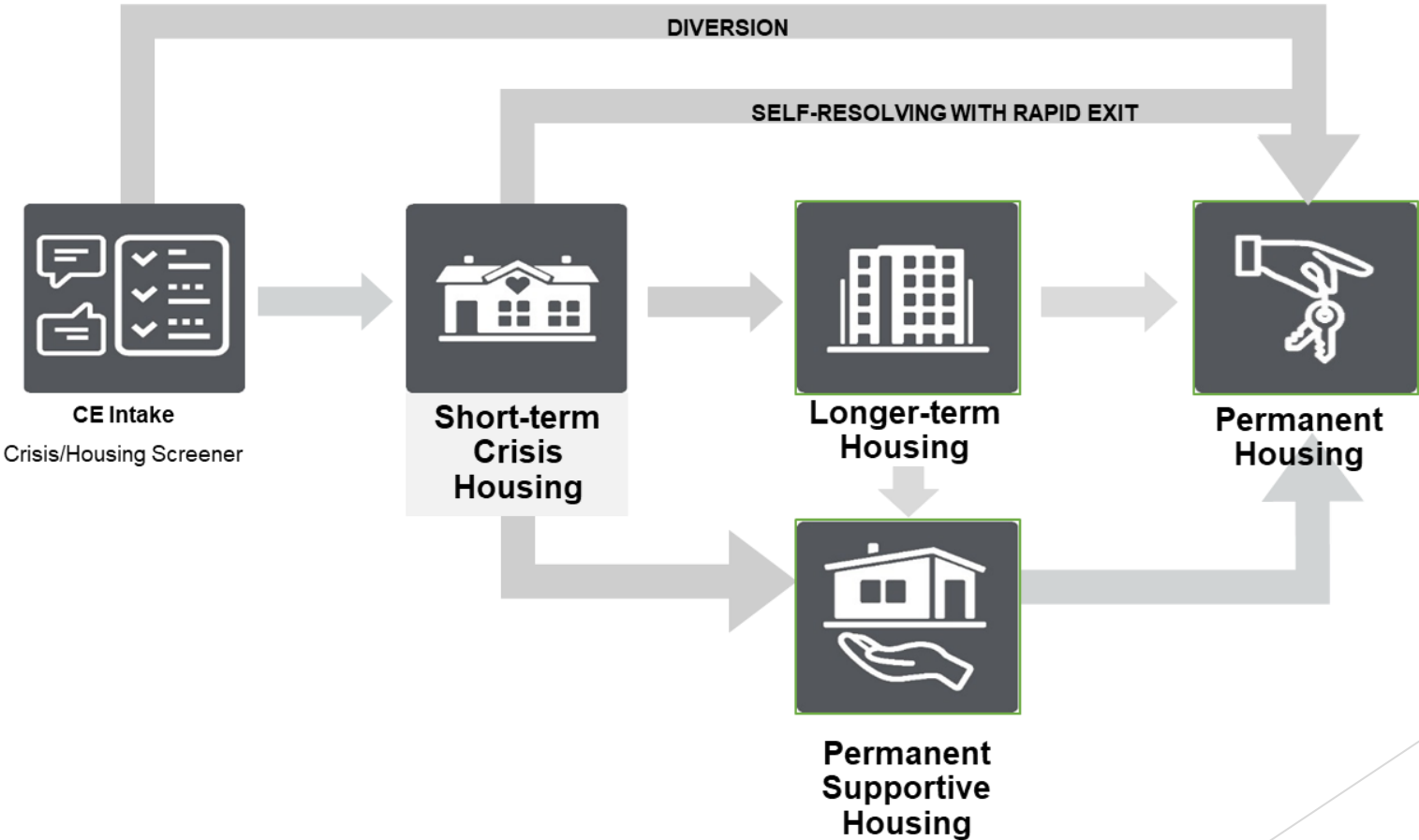
CRISIS & SHORT-TERM HOUSING AND SERVICES

- Crisis Beds/ Emergency Shelter
- Host Homes
- Crisis Transitional Housing

LONG-TERM HOUSING

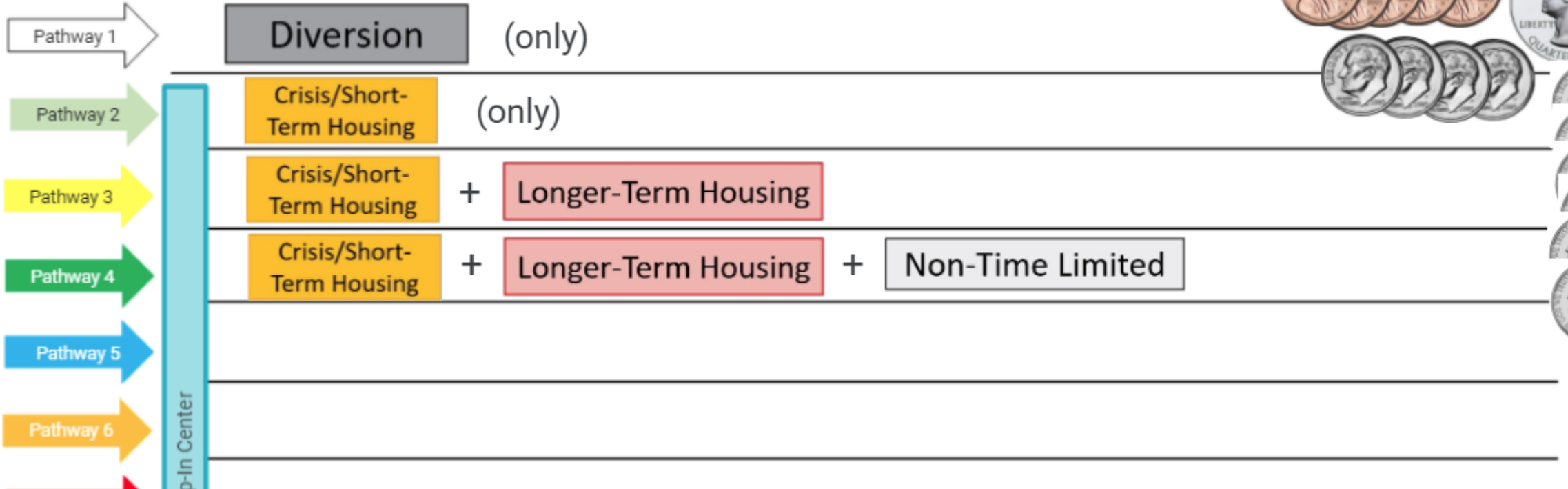
- Rapid Rehousing
- Permanent Supportive Housing
- Other Affordable Housing/Subsidy
- Home with Family/Reunification
- Longer Term Host Homes
- Longer Term Transitional Housing

Activity 2: Creating an “Ideal” System Map



Activity 3: Estimating Pathway Use by Percentages

18-24 "Pathways" from System Map
Percent of Total = 0%



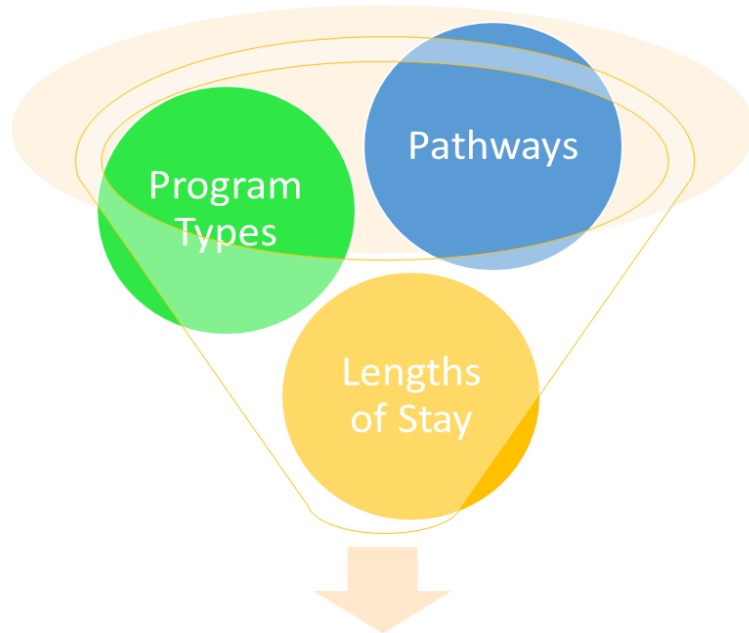
Activity 4: Deciding which housing and service types are needed most in your ideal system?

Front Porch		Percent
Mobile Outreach and/or Navigation	Staff are deployed into the community and may include mobile outreach to unsheltered locations and/or in-reach with navigators assigned to community locations (schools, libraries). Connect youth with community resources with goals of prevention, diversion, harm reduction, and housing connections. May include coordinated entry, youth navigators, family reunification.	%
Drop-in Center	A place where youth can “drop in” and be provided with low-barrier services, including connection to housing resources, basic necessities, case management, and more. May include coordinated entry, youth navigators, family reunification.	%
Crisis Housing		Percent
Shelter	Safe and affirming space that bring youth inside and connects them to long term housing solutions.	%
Host Homes	Short-term, family-based settings that can offer youth a safe alternative to shelter with financial assistance and supportive services. May include options to live with existing people in their network or with an unknown (but well-vetted and trained) volunteer host.	%
Transitional Housing	Could be used as a crisis option for short period of time. TH can look like shared living at one place or scattered-site with master leasing.	%

Activity 5: Deciding on average how long young people will utilize programs

Service Strategies	Diversion	Outreach/ Drop-In	Crisis Housing (shelter, host home, TH)	Longer-Term Housing (RRH, Host Home, TH)	Non-Time Limited Housing (PSH)
	Av Mo/Per.	Av Mo/Per.	Av Mo/Per.	Av Mo/Per	Unit/ Per
Pathway 1: Diversion Only					
Pathway 2: Crisis Only		2 months	4 months		
Pathway 3: Crisis to Longer-Term Housing					
Pathway 4: Crisis to Long-Term to PSH					Permanent
Pathway 5: Crisis to PSH					Permanent
Pathway 6: Longer-Term Housing Only					
Pathway 7: PSH Only					Permanent

Using System Modeling Results



+ Cost of Programs + Number of Youth
and Young Adults =
**Number of Units and Amount of \$ to
End Homelessness for Youth and Young
Adults**

- ▶ Finally, we will use the results of the system modeling process to set funding priorities and make recommendations about how to use the \$10.1 million YHDP funds awarded to your community.

See You Then!

Looking towards our
next session

System Modeling Retreat:

Feb 6th 11a-4:30p

https://osh.sccgov.org/sites/g/files/exjcpb671/files/yhdp_community_meetings_flyer.pdf