



SILICON VALLEY 2.0

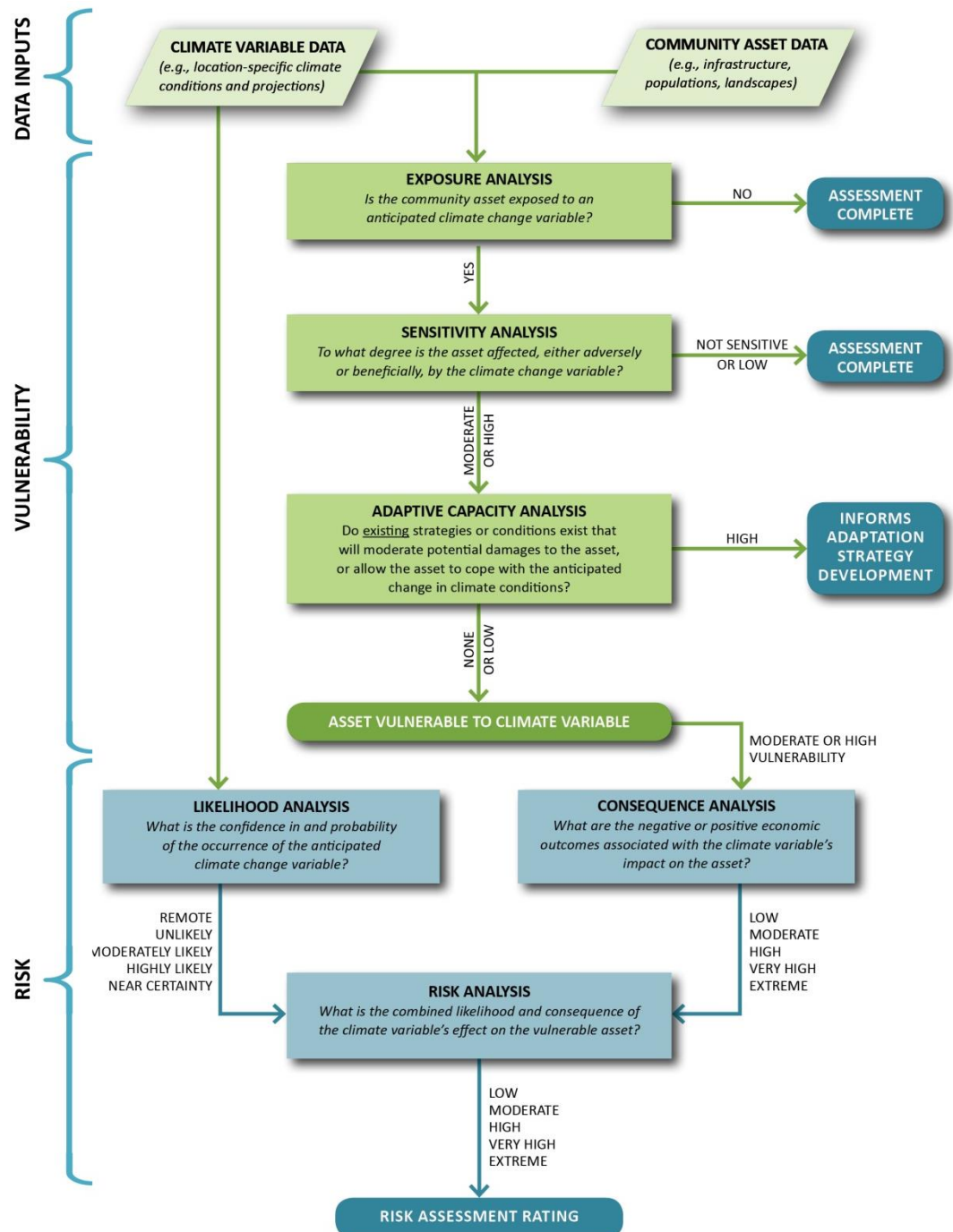
A Regional Effort to Minimize the Impacts of Climate Change

COUNTY OF SANTA CLARA OFFICE OF SUSTAINABILITY

SV 2.0 PROJECT GOALS

- Identify assets threatened by climate change and the magnitude of the potential economic, social, and environmental impacts using a robust vulnerability and risk management framework
- Develop the SV 2.0 Climate Change Preparedness Decision Support Tool to evaluate the vulnerability and consequence of key assets to potential climate change
- Identify potential adaptation strategies to minimize climate impacts
- Identify the region's top priorities and the near-term actions needed to implement an effective regional-scale adaptation response
- Facilitate and coordinate regional climate adaptation planning and implementation efforts for Silicon Valley
- Create a set of resources capable of being replicated Statewide

Project Methodology Flow Chart



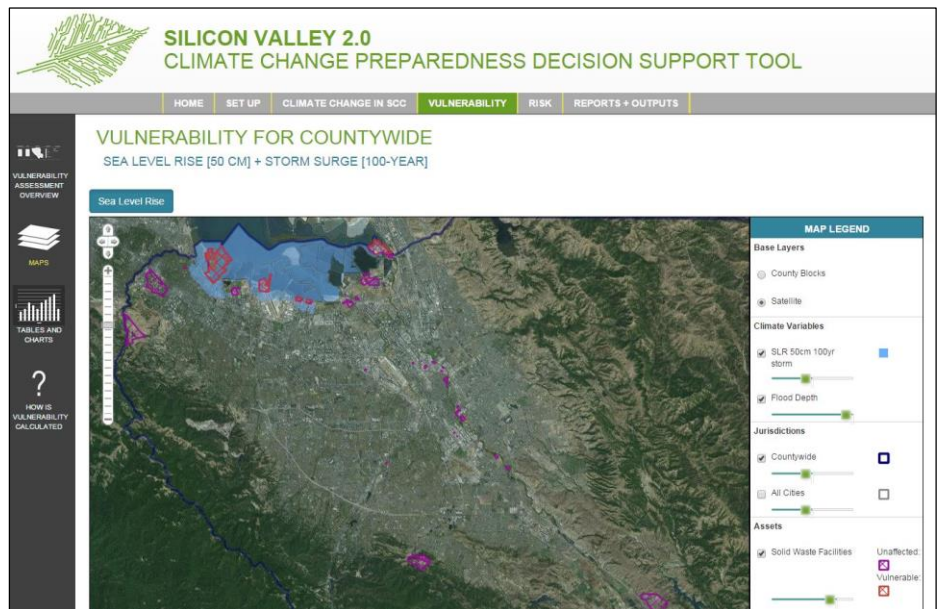
VULNERABILITY ANALYSIS + STRATEGY DEVELOPMENT

- Climate variables included: sea level rise, sea level rise + storm surge, riverine flooding, wildfire, and extreme heat countywide
- Asset sectors assessed: Shoreline, Buildings + Properties, Communications, Ecosystems, Energy, Public Health, Solid + Hazardous Waste, Transportation, Water + Wastewater
- Adaptation strategies include recommendations for: scale, class, initiation timing, lead, cross asset sector applicability, near-term benefits, challenges and potential solutions, and precedents

CLIMATE CHANGE READINESS DECISION SUPPORT TOOL

- Select different climate variables, assumptions, and assets to study
- Understand how the region's climate conditions will change over the next century
- Identify assets exposed to climate change variables and associated vulnerability
- Calculate estimated levels of economic consequence resulting from asset vulnerability
- Generate vulnerability and risk reports, maps, tables, and charts

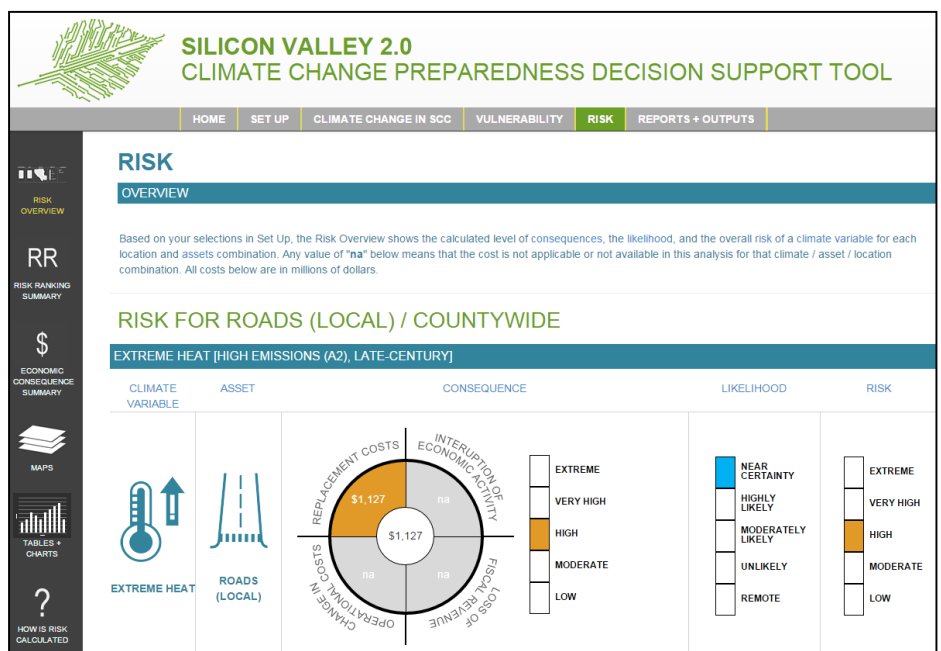
Tool Screenshot: Solid Waste Assets' Vulnerability to SLR + Storm Surge



CLIMATE CHANGE ADAPTATION GUIDEBOOK

- Summarizes projected climate changes, vulnerability analysis, and economic consequences
- Recommends adaptation strategies seeking to facilitate and coordinate regional planning and implementation efforts
- Helps cities prioritize vulnerable assets and identify the most appropriate strategies to help protect them

Tool Screenshot: Economic Consequences of Extreme Heat on Road Assets



For more information, please contact: Demetra J. McBride, Director, Office of Sustainability, Santa Clara County Office of the County Executive / (408) 299-6413 / demetra.mcbride@ceo.sccgov.org

Funded by a grant from the California Strategic Growth Council / Lead Consultant: AECOM