

HGA

+

CUNINGHAM

G R O U P

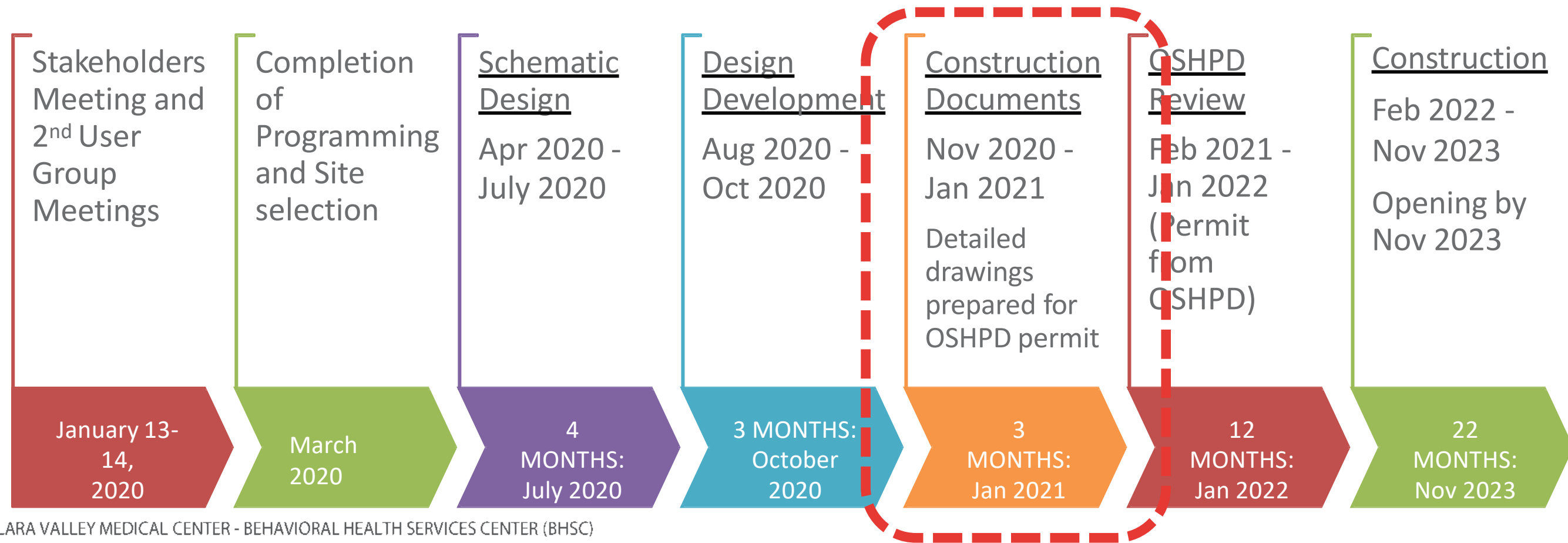
SCVMC  
BEHAVIORAL HEALTH SERVICES CENTER

VMC NEIGHBORS  
DESIGN DEVELOPMENT PRESENTATION

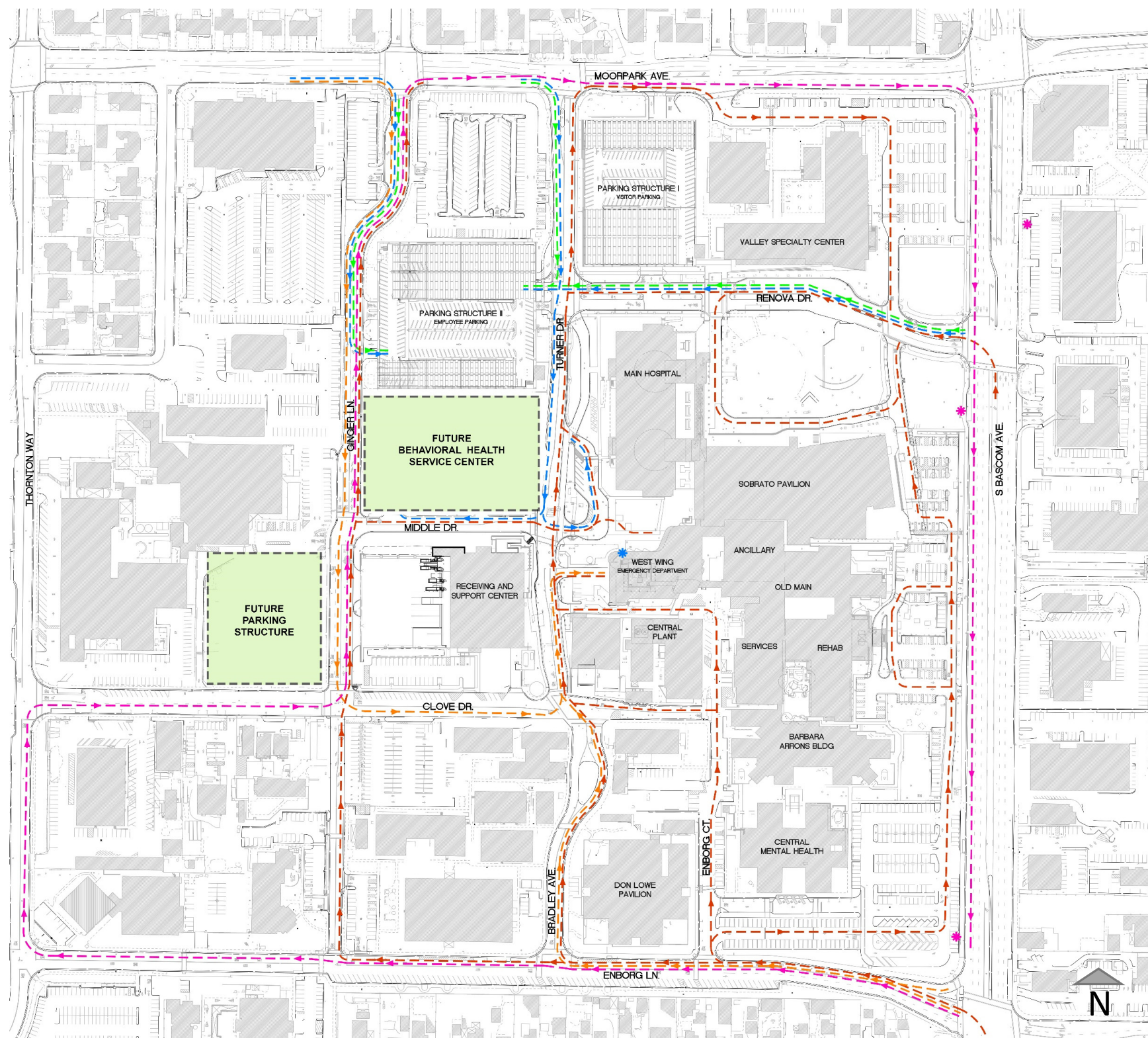
11.19.2020

# SCHEDULE

## OVERALL TIMELINE (2020-2023)



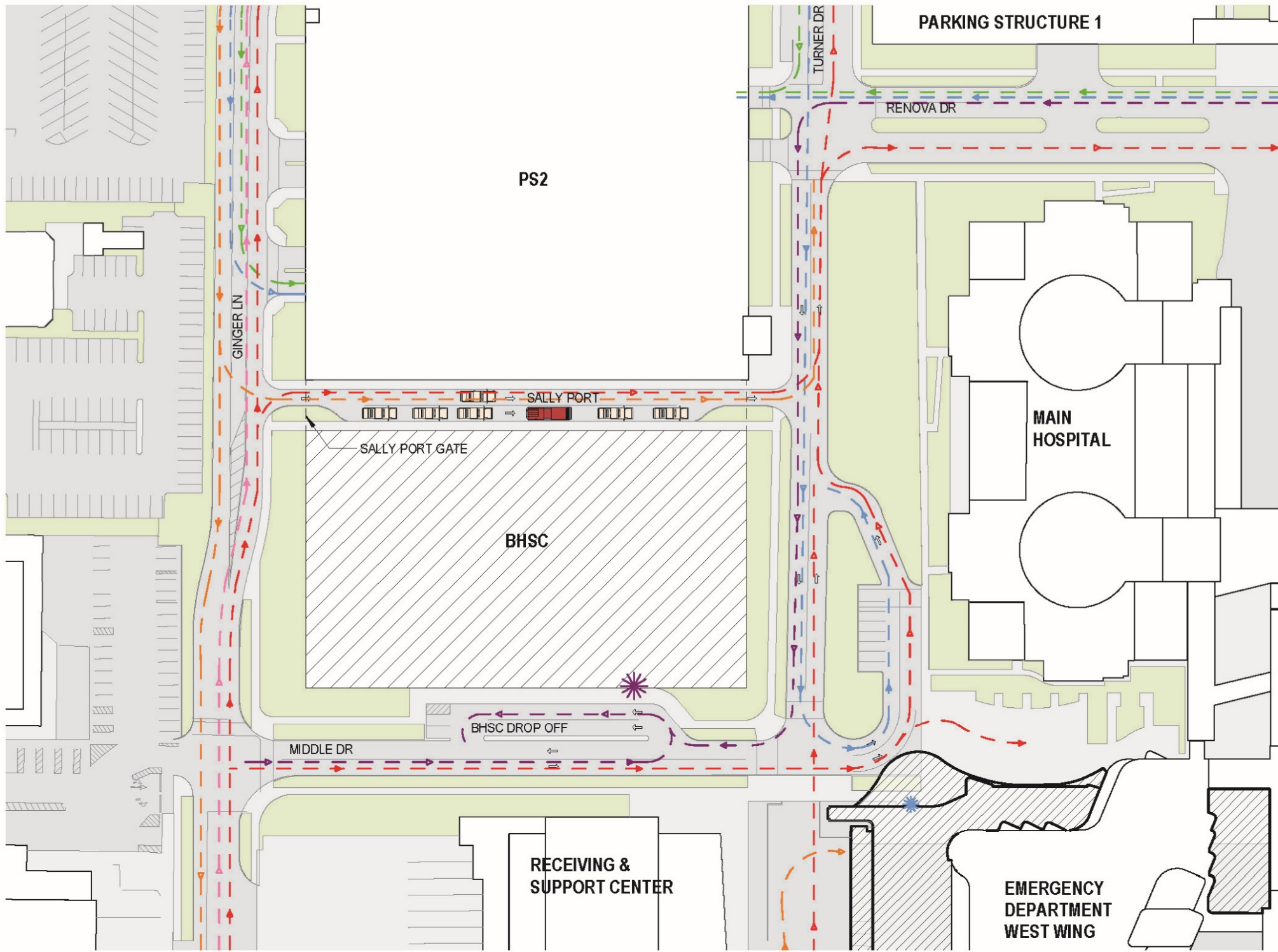
SANTA CLARA VALLEY MEDICAL CENTER - BEHAVIORAL HEALTH SERVICES CENTER (BHSC)



# EXISTING SITE CIRCULATION

## LEGEND

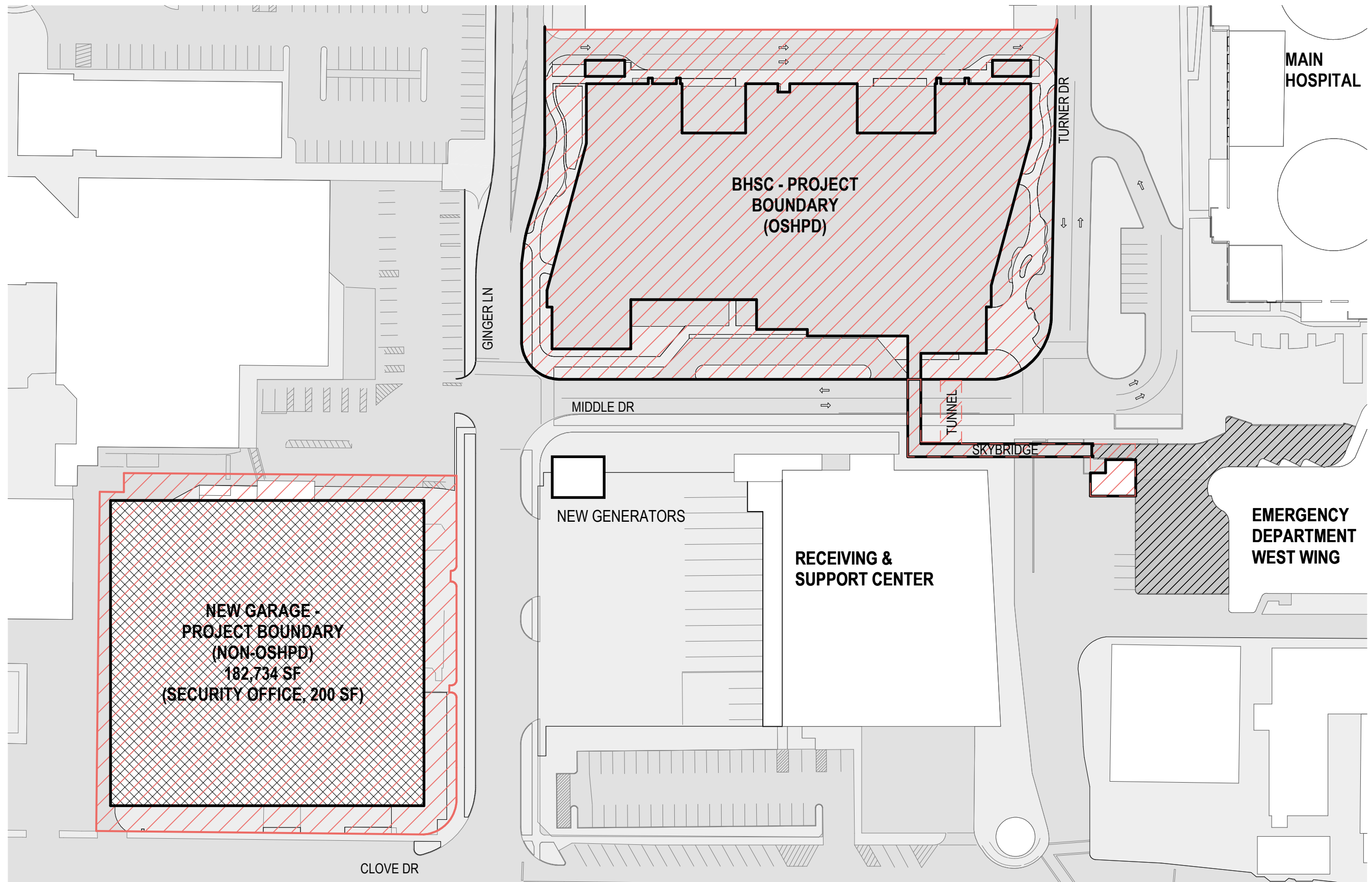
- ▶— HOSPITAL STAFF - DRIVING
- ▶— ED PATIENTS / ED VISITORS - DRIVING
- \* EMERGENCY DEPARTMENT ENTRANCE
- ▶— AMBULANCE/EMERGENCY SERVICES
- ▶— FIRE ACCESS
- ▶— PUBLIC TRANSIT - BUS ROUTE
- \* PUBLIC TRANSIT - BUS STOP



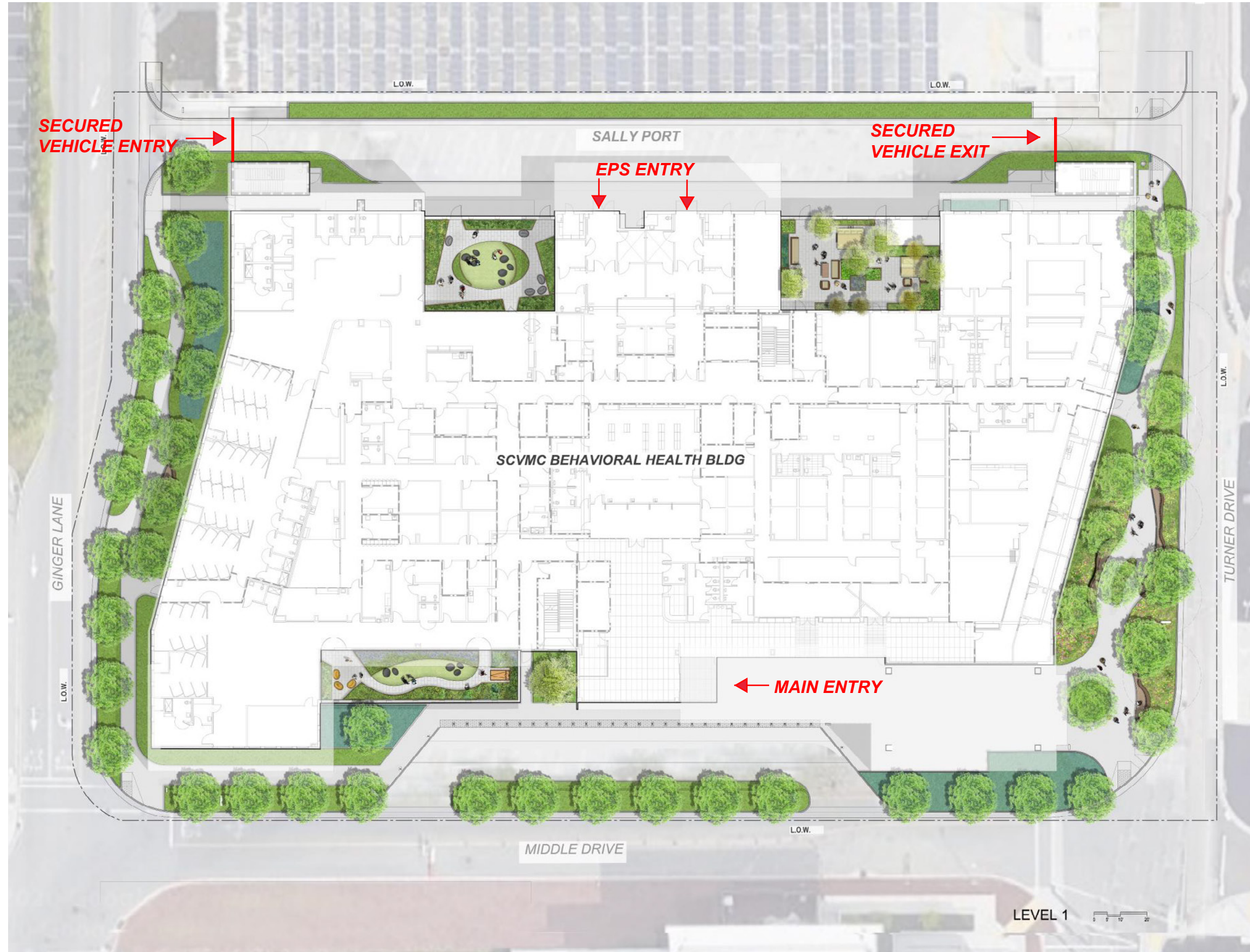
# FUTURE SITE CIRCULATION

- - - - - → HOSPITAL STAFF - DRIVING
- - - - - → ED PATIENTS / ED VISITORS - DRIVING
- - - - - → PUBLIC TRANSIT - BUS ROUTE
- - - - - → BHSC DROP-OFF TRAFFIC
- - - - - → FIRE ACCESS
- - - - - → AMBULANCE / EMS
- ★ → EMERGENCY DEPARTMENT ENTRANCE
- ★ → BHSC ENTRANCE

# SITE BOUNDARIES



# SITE DESIGN



# EAST-EDGE LANDSCAPE



# PROGRAM

PROGRAM SUMMARY			Reconciled SD Program (8/27/2020)	Design Development Program (10/29/2020)	Notes
Summary	Rooms	Beds	Total DGSF		
<b>INPATIENT UNITS</b>	<b>66</b>	<b>77</b>	<b>Total Inpatient Beds</b>		
<b>CHILD</b>					
Child Medical Unit	6	6	5,916	6,073	
Child BH Inpatients	6	8	8,874	9,109	
<b>ADOLESCENT</b>					
Adolescent Inpatients	18	21	23,200	22,504	
<b>ADULT</b>					
Adult Inpatients	18	21	23,867	24,679	
<b>ADULT</b>					
Adult Inpatients	18	21	18,662	18,676	
Sub-Total DGSF			80,519	81,041	
DGSF to BGSF Factor		18%	14,493	14,003	
<b>Total BGSF</b>			<b>95,012</b>	<b>95,044</b>	
<b>EMERGENCY PSYCHIATRY SERVICES (EPS)</b>					
Child + Adolescent + Adult Emergency Care			22,707	24,085	
Sub-Total DGSF			22,707	24,085	
DGSF to BGSF Factor		18%	4,087	4,335	
<b>Total BGSF</b>			<b>26,794</b>	<b>28,420</b>	
<b>URGENT CARE &amp; PHARMACY</b>					
Child + Adolescent + Adult Emergency Care			11,980	12,284	Assessment Room added
Sub-Total DGSF			11,980	12,284	
DGSF to BGSF Factor		18%	2,156	2,211	
<b>Total BGSF</b>			<b>14,136</b>	<b>14,496</b>	
<b>LOBBY / ADMINISTRATIVE / SUPPORT SERVICES</b>					
Lobby + Admin + Professional Offices + Staff Amenities			20,160	16,366	MEP items shifted to Building Basement
Sub-Total DGSF			20,160	16,366	
DGSF to BGSF Factor		18%	3,629	2,946	
<b>Total BGSF</b>			<b>23,789</b>	<b>19,312</b>	
<b>Total BGSF</b>			<b>159,731</b>	<b>157,272</b>	
<b>Sub-Total Gross SF</b>			<b>159,731</b>	<b>157,272</b>	<b>-2% Increase</b>
<b>BUILDING BASEMENT</b>					
MEP Basement			11,000	12,500	Required support space
Requested Campus Basement Storage				12,500	
BGSF Factor		30%		7,500	
<b>Total BGSF</b>			<b>11,000</b>	<b>32,500</b>	
<b>Total Building Gross SF</b>			<b>170,731</b>	<b>189,772</b>	<b>11% Increase</b>

Requested Campus Basement Storage	12,500	
Patient Transfer Bridge	2,400	2,400
Roof Top BB court		3,800



# LEVEL 1



PARKING STRUCTURE 2

SALLY PORT

EPS INTAKE

EMERGENCY PSYCHIATRIC SERVICES  
ADULT (EPS)

ADMINISTRATION

PHARMACY

URGENT CARE

EMERGENCY PSYCHIATRIC SERVICES  
MINOR (EPS)

LOBBY

GINGER LANE

TURNER DRIVE

MIDDLE DRIVE

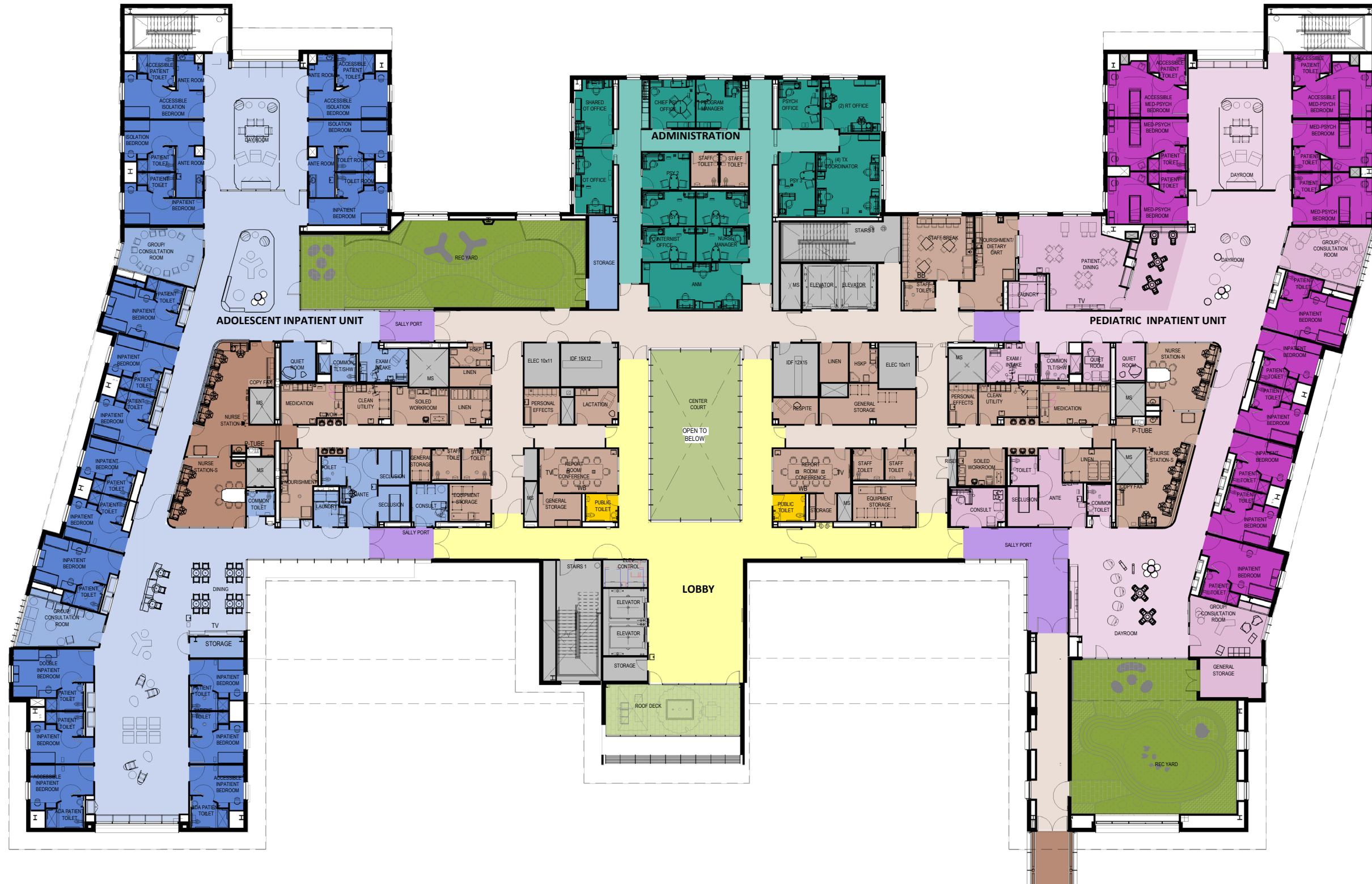
WELCOME - MAIN ENTRANCE LOBBY





# LEVEL 2 -ADULT RECREATION YARD





# AERIAL VIEW



# SOUTH EAST CORNER



# SOUTH EAST CORNER - DETAIL





# MAIN ENTRY LOBBY EXTERIOR



# MAIN ENTRY



# SOUTH WEST CORNER



# NORTHWEST CORNER



# NORTH - EPS ENTRY



# SPORTS COURT - AERIAL VIEW

