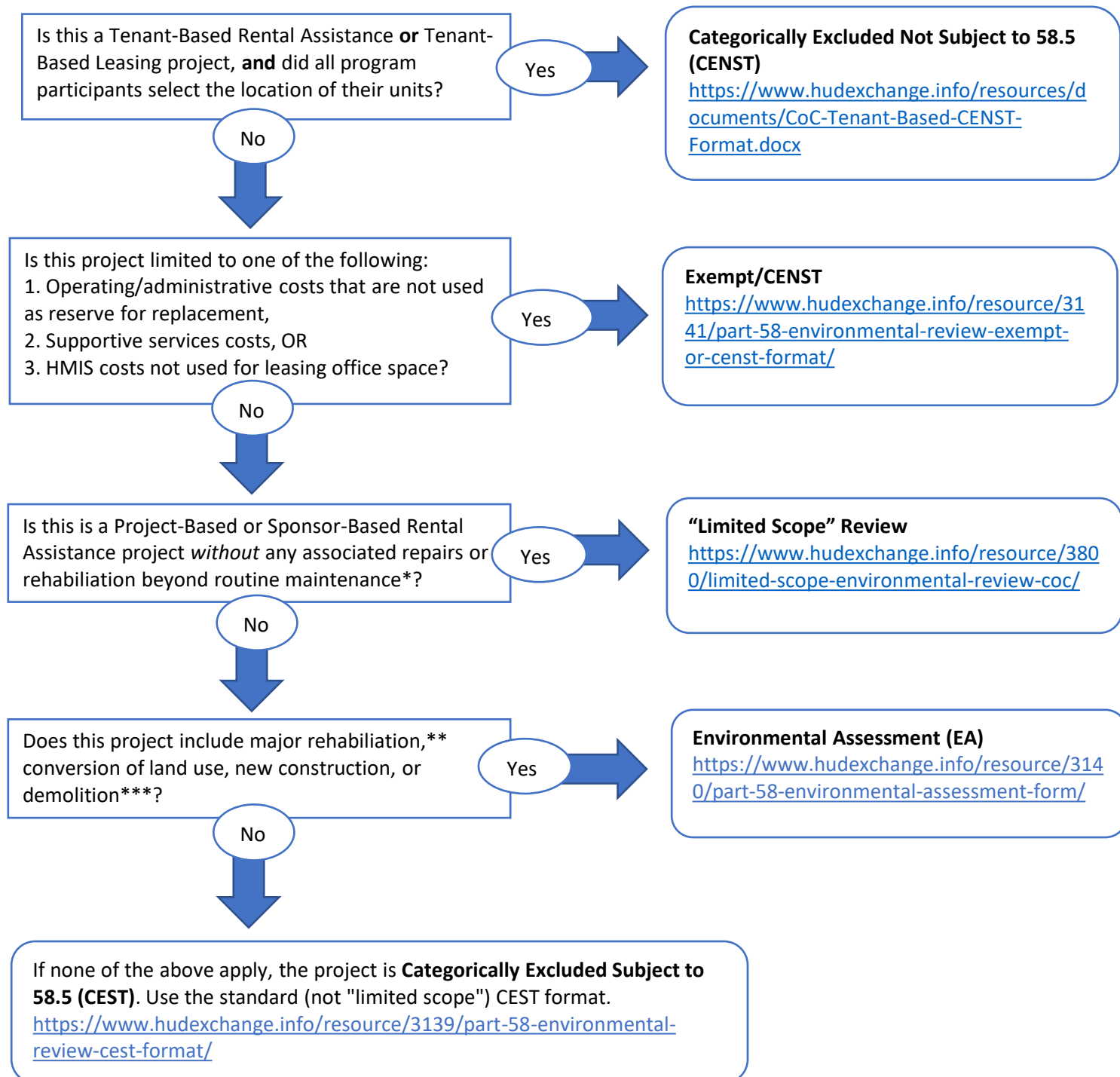


## What level of review and which format should be used to complete environmental reviews for Continuum of Care (CoC) Program projects?



**This document applies only to CoC program projects.**

**For more information on determining level of review, consult 24 CFR Part 58.**

\* Routine maintenance is defined for purposes of environmental review at <https://www.hudexchange.info/resources/documents/Guidance-Categorizing-Activity-as-Maintenance-Environmental-Regulations-24-CFR-Parts-50-and-58.pdf>

\*\* For purposes of determining level of review, "major rehabilitation" is rehabilitation that does not conform to the limitations listed in 24 CFR 58.35(a)(3).

\*\*\* Select "yes" if new construction or demolition falls outside the definition of an "individual action" in 24 CFR 58.35(a)(4). If proposed construction or demolition conforms to the requirements in that section, select "no."