

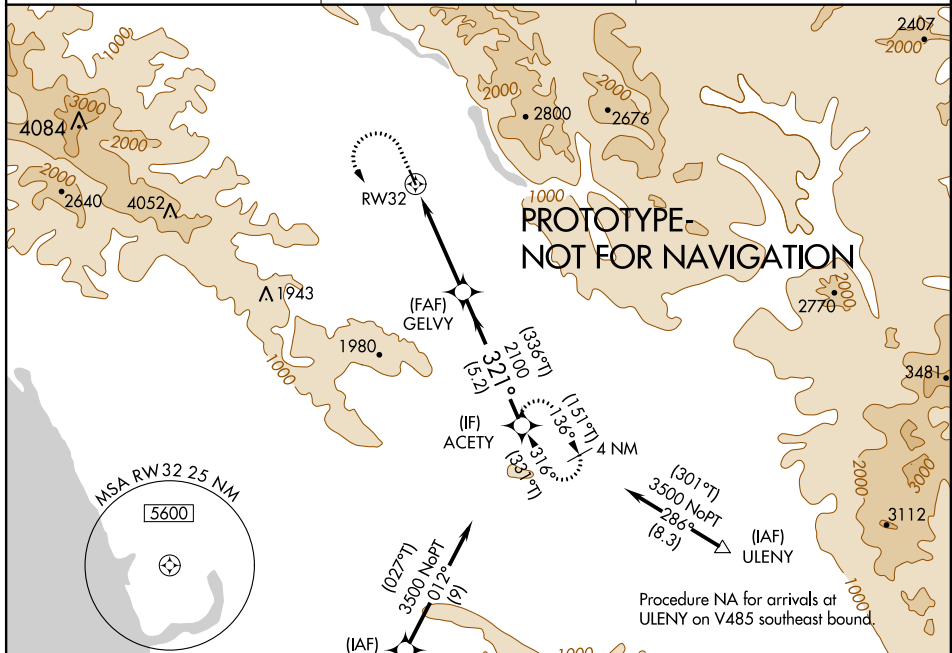
RNAV (GPS) RWY 32

SAN MARTIN (E16)

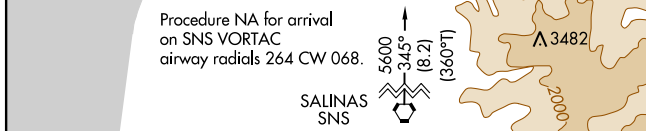
APP CRS	Rwy Idg	3095
321°	TDZE	284
	Apt Elev	284

RNP APCH.	MISSED APPROACH: Climb to 1700 then climbing left turn to 3500 direct ACETY and hold.
<p>⚠ Circling NA southwest of Rwy 14-32. Rwy 32 helicopter visibility reduction below $\frac{3}{4}$ SM NA.</p>	

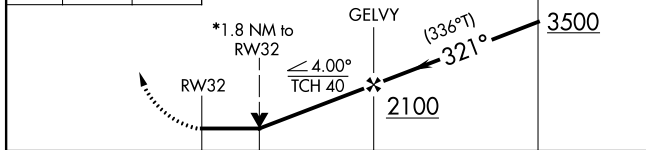
AWOS-3P 118.35	NORCAL APP CON 124.525 348.675	UNICOM 122.7 (CTAF) 0
--------------------------	--	---------------------------------



ELEV 284	TDZE 284
----------	----------



1700	3500	ACETY



CATEGORY	A	B	C	D
LNVA MDA	1060-1 776 (800-1)	1060-1¼ 776 (800-1¼)		NA
Ⓢ CIRCLING	1060-1 776 (800-1)	1160-1¼ 876 (900-1¼)		NA

