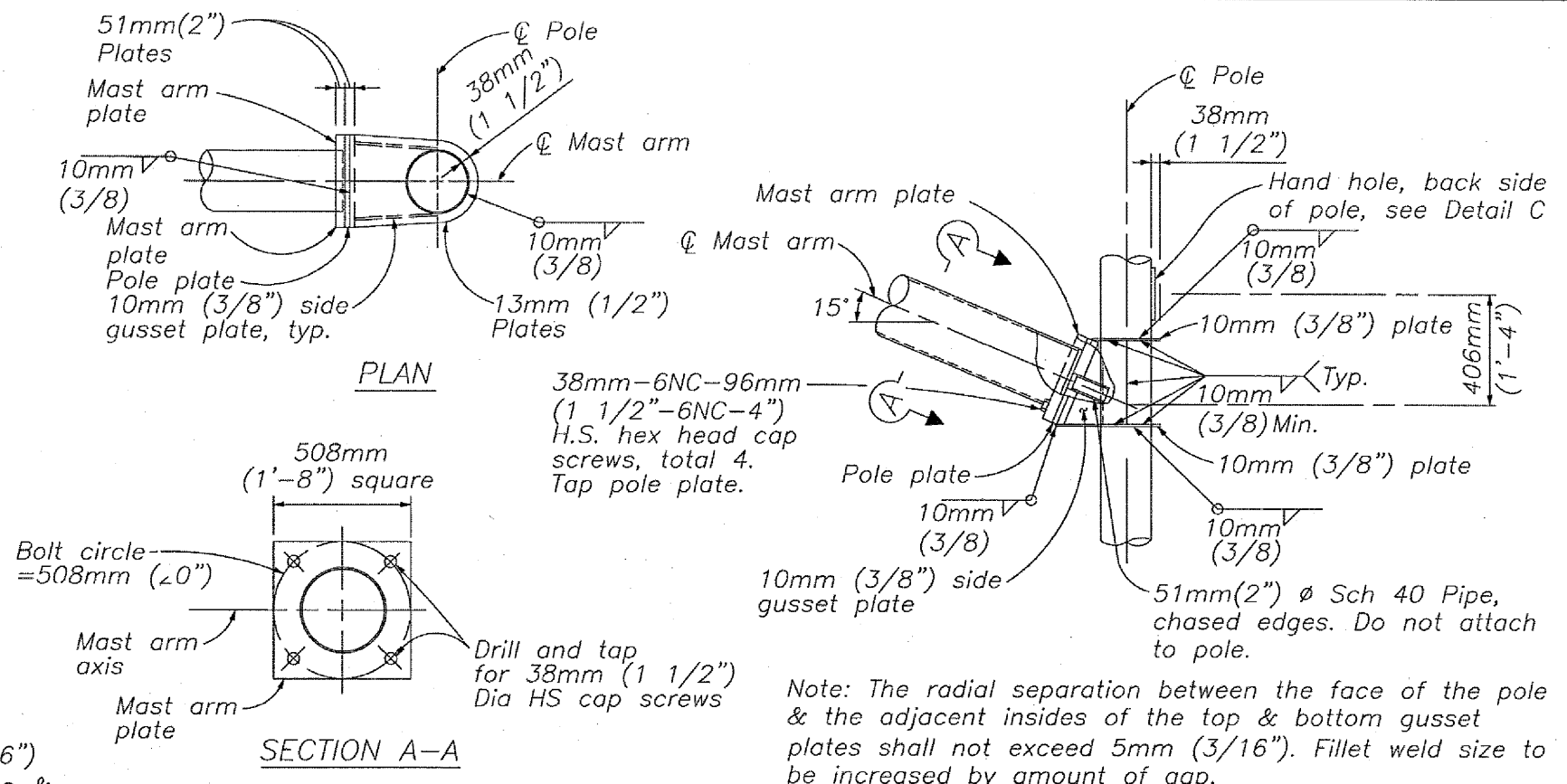


**A** LUMINAIRE ARM CONNECTION

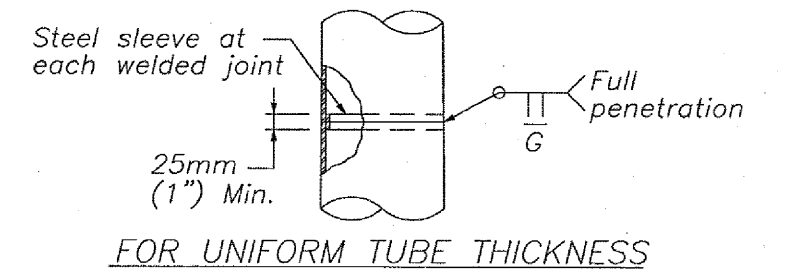


PLAN

SECTION A-A

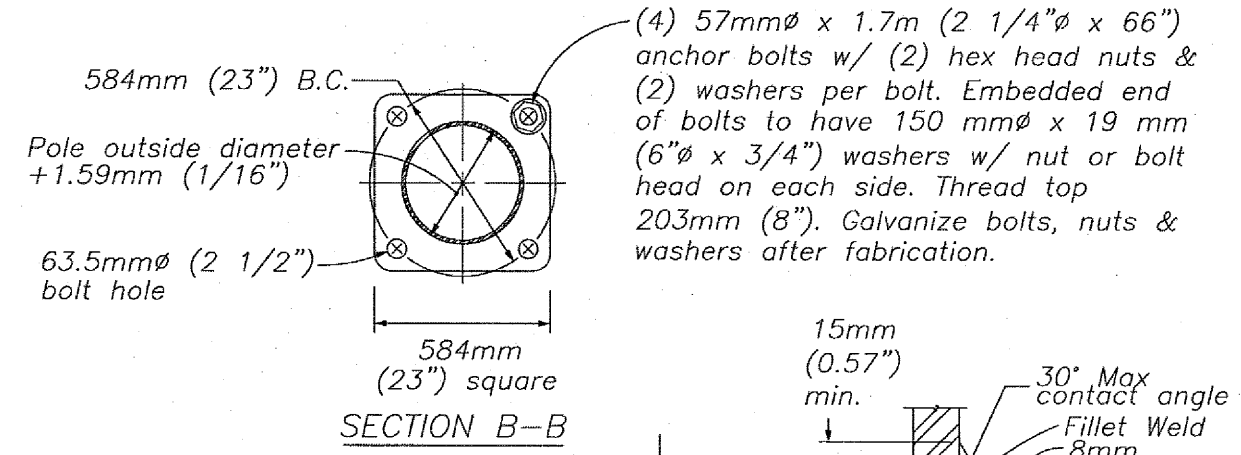
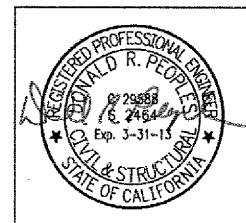
Note: The radial separation between the face of the pole & the adjacent insides of the top & bottom gusset plates shall not exceed 5mm (3/16"). Fillet weld size to be increased by amount of gap.

**B** SIGNAL ARM CONNECTION



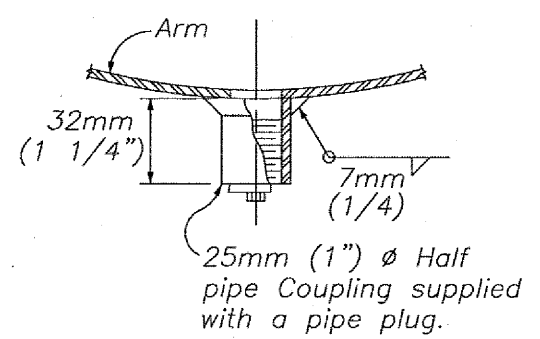
Thickness of filler ring (if required) to match difference in tapered tube thickness x 26mm (1 1/2") wide. 40mm (1 1/2") diameter. 1.5mm (1/16") max. offset. Full penetration weld. 3.05mm Thick x 75mm (1/8" x 3") backup ring (Tapered to match wall) AT TUBE THICKNESS CHANGE

**E** SPLICE DETAIL



SECTION B-B

**C** BASE PLATE CONNECTION



**D** SIGNAL PORT DETAIL

**M**TRIC (& ENGLISH) UNITS

			<b>SANTA CLARA COUNTY ROADS AND AIRPORTS DEPARTMENT</b>			<b>STANDARD DETAILS CONNECTION DETAILS</b> TYPE SCC 26-6-160 (26-6-100) AND TYPE SCC 29-6-160 (29-6-100)			DRAWING NO. <b>E</b> <b>41</b> SHEET NO. <b>1</b> OF <b>1</b>			
NO.	REVISIONS	BY	DATE	APP'D	DESIGNED MDW 09/14/11	DATE 09/14/11	WORK ORDER	SUBMITTED:	APPROVAL:	PROJECT NO.	CONTRACT NO.	FILE NO.
					CHECKED DRP 09/14/11	DATE 09/14/11	LEVEL BOOK	William K. Young	William K. Young			