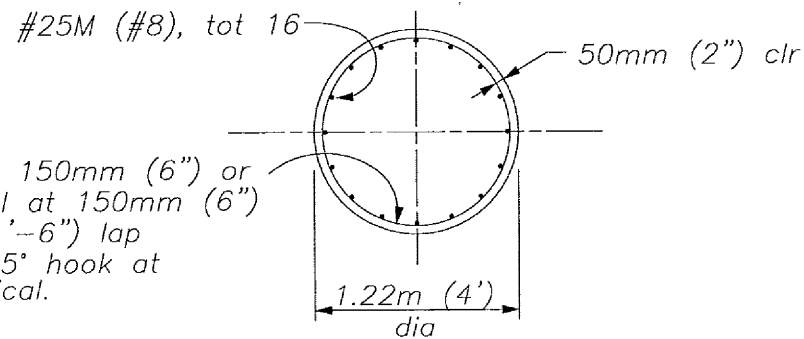
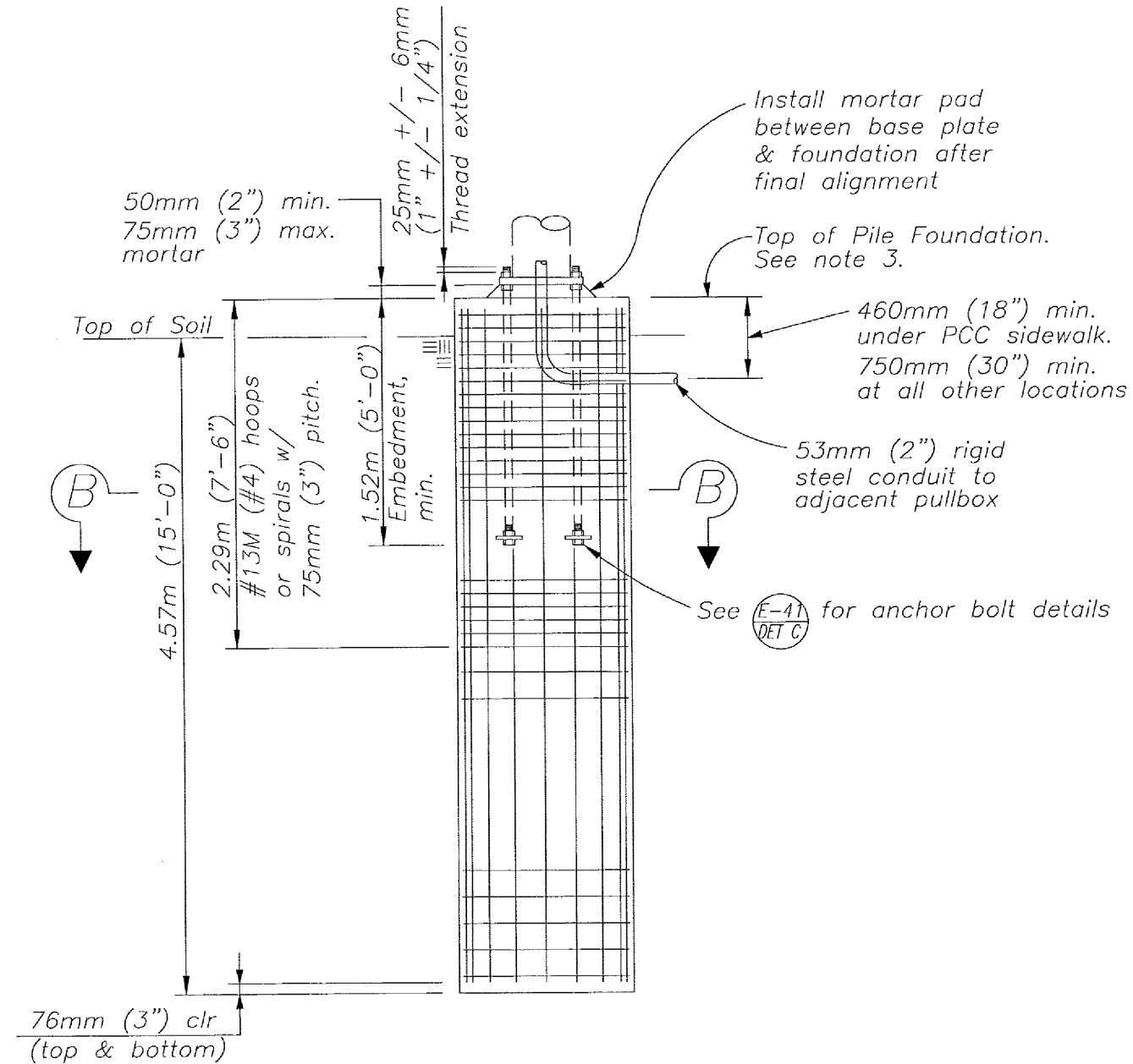


NOTES :

- 1) These details apply to Type SCC 26-6-160 (26-6-100) and SCC 29-6-160 (29-6-100) signal standards.
- 2) Cast-in-place concrete pile shall conform to State of California Standard Specifications 2010 Section 49-3.
- 3) Top of Pile Foundation shall conform to the following:
 - In paved island or sidewalk, it shall conform to finished grade of island or sidewalk.
 - In non-paved area and adjacent to curb, it shall conform to top of curb.
 - In non-paved area without a curb, it shall be 100mm (4") above Top of Soil.
- 4) For additional notes & details see (ES-7M). These plans shall control where notes & details are in conflict.



(B) SECTION B-B



(A) CAST-IN-DRILLED HOLE PILE FOUNDATION
Reinforced Pile



MTRIC (& ENGLISH) UNITS

NO.		REVISIONS		BY		DATE		APP'D				SANTA CLARA COUNTY ROADS AND AIRPORTS DEPARTMENT				STANDARD DETAILS SIGNAL STANDARD FOUNDATION TYPE SCC 26-6-160 (26-6-100) AND TYPE SCC 29-6-160 (29-6-100)				DRAWING NO. E 43	
DESIGNED		DATE		WORK ORDER		SUBMITTED:				APPROVAL:				PROJECT NO.		CONTRACT NO.		FILE NO.		SHT NO. 1 OF 1	
YTD		09/14/11						No C38982 Exp. 3-31-13 CIVIL STATE OF CALIFORNIA		No C38010 Exp. 5-31-13 CIVIL STATE OF CALIFORNIA											
DRAWN		DATE		LEVEL BOOK		William K. Young		Dan Collier													
DRP		09/14/11																			
CHECKED		DATE		TRANSIT BOOK																	