

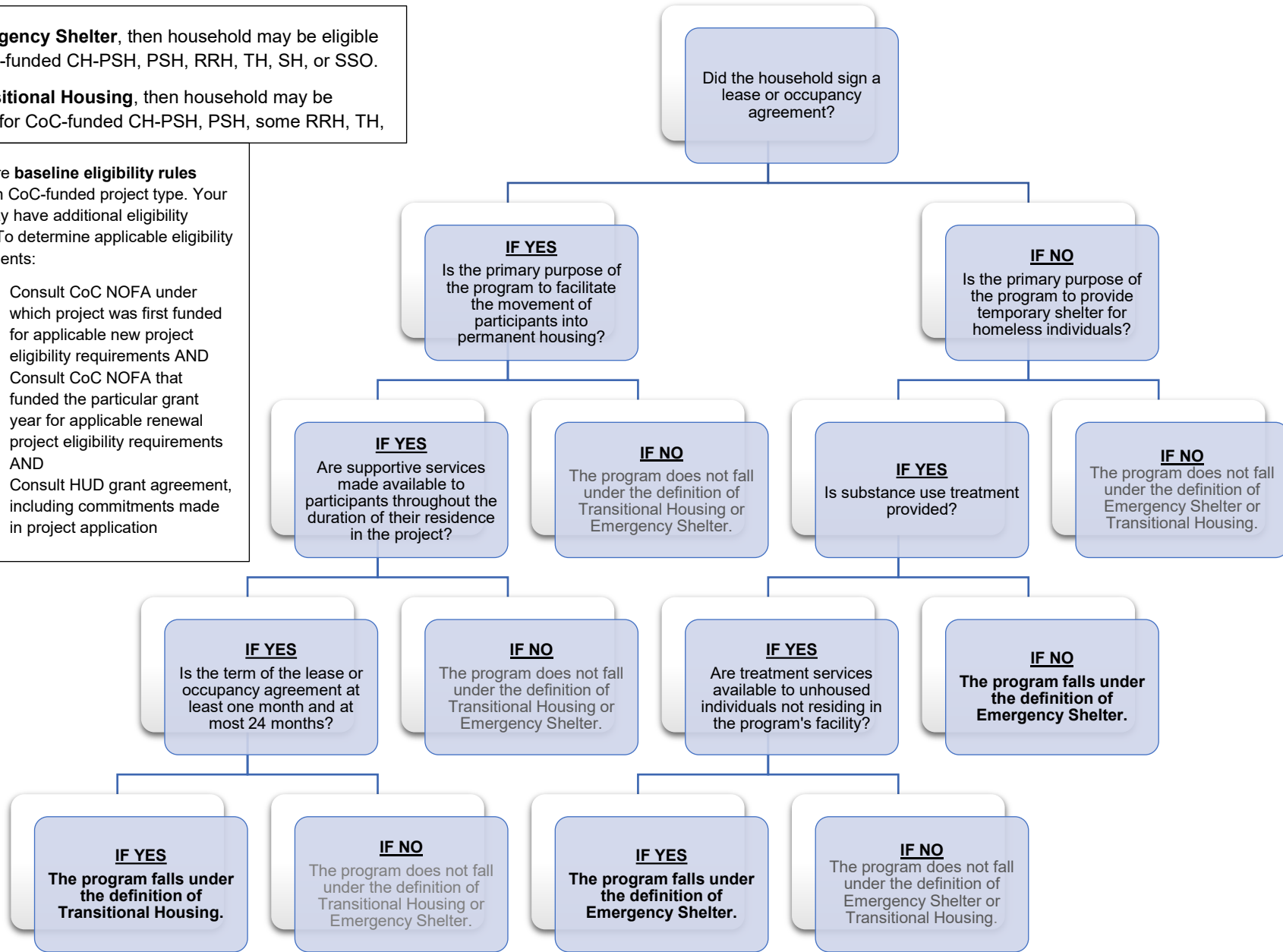
Eligibility Documentation: Households Exiting THUs

If **Emergency Shelter**, then household may be eligible for CoC-funded CH-PSH, PSH, RRH, TH, SH, or SSO.

If **Transitional Housing**, then household may be eligible for CoC-funded CH-PSH, PSH, some RRH, TH,

These are **baseline eligibility rules** based on CoC-funded project type. Your grant may have additional eligibility criteria. To determine applicable eligibility requirements:

1. Consult CoC NOFA under which project was first funded for applicable new project eligibility requirements AND
2. Consult CoC NOFA that funded the particular grant year for applicable renewal project eligibility requirements AND
3. Consult HUD grant agreement, including commitments made in project application



**Please refer to pgs 45-47 of the [Quality Assurance Standards \(QAS\)](#) for further information on transitional housing programs' eligibility and service requirements.