



Community Solutions

EXPLORING THE INTERSECTIONS OF GENDER-BASED VIOLENCE AND HOMELESSNESS

An intersectional, collaborative approach to advocacy and housing



To create opportunities for positive change by promoting and supporting the full potential of individuals, the strengths of families, and the well being of the community.





Community Solutions is a comprehensive non-profit human services agency serving Santa Clara and San Benito Counties.

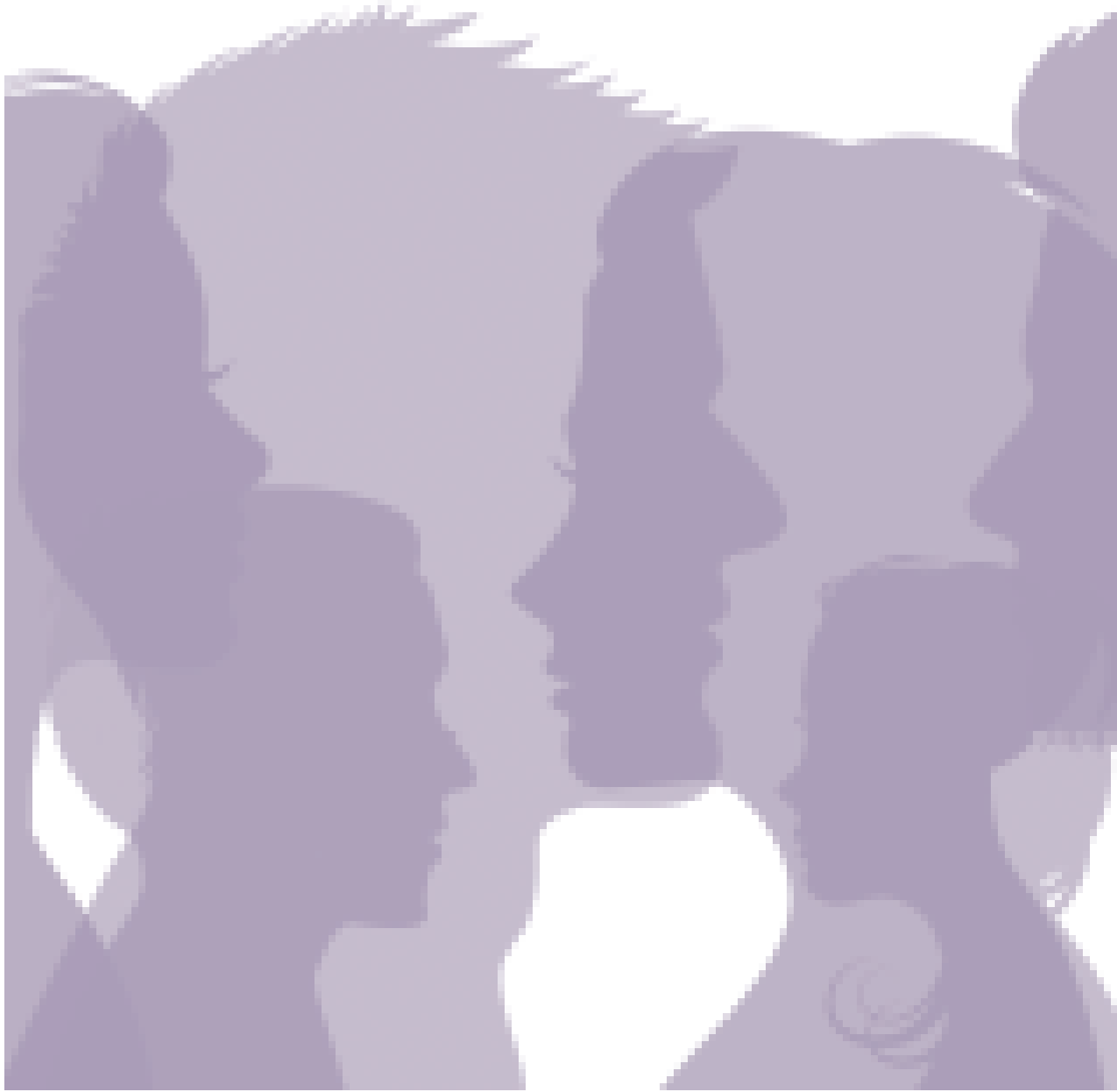
Since 1973, we have responded to the growing and changing needs of our community, serving several thousand people, From young children to older adults each year.



We provide a comprehensive spectrum of prevention, intervention, treatment, and residential services to help children, families and individuals overcome the challenges posed by:

- Mental health issues
 - Substance abuse
 - Trauma
- Severe family dysfunction
 - Gang influence
 - Sexual assault
- Intimate partner violence
 - Human trafficking
 - Homelessness





Our Solutions to Violence programs provide trauma-informed, survivor-centered and empowerment-based services to strengthen and support survivors of intimate partner abuse, sexual assault, and human trafficking.

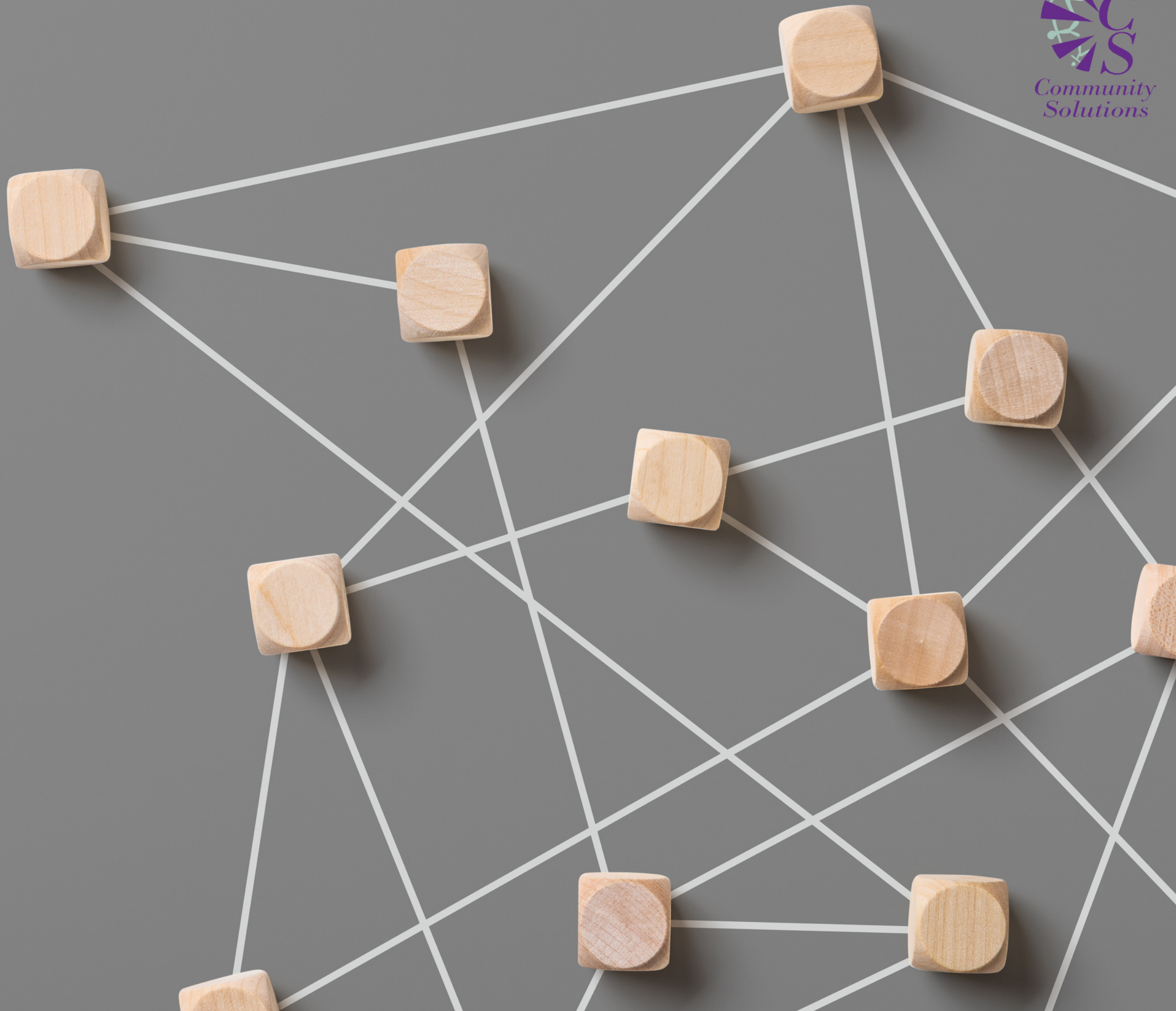
Additionally we work create change through education, prevention, and community outreach services



OBJECTIVES

1. Increased understanding of how IPV, SA, and HT intersect
2. Increased understanding of the intersections of gender-based violence
3. Increased understanding of GBV's impact on homelessness
4. Barriers survivors face when trying to secure and maintain long-term housing.
5. Increased understanding of survivor needs for services and housing from crisis to stabilization/transitional to sustainability.

**Increased
understanding of
how Intimate
Partner Abuse,
Sexual Assault,
and Human
Trafficking
intersect.**



CDC: Connecting the Dots

Links of Violence



		Type of Violence Perpetration							
		Child maltreatment	Teen Dating Violence	Intimate Partner Violence	Sexual Violence	Youth Violence	Bullying	Suicide	Elder Maltreatment
Individual	Low educational achievement	X ⁴²	X ⁵²	X ⁵³		X ⁴⁶	X ⁵⁸	X ⁵⁵	
	Lack of non-violent social problem-solving skills	X ⁴²	X ⁵²	X ⁵³	X ^{57,56}	X ⁴⁶	X ³⁷	X ⁵⁵	X ²⁷
	Poor behavioral control/ Impulsiveness	X ⁴²	X ⁵²	X ⁵³	X ³¹	X ⁴⁶		X ⁴¹	
	History of violent victimization	X ⁴²	X ¹⁰²	X ⁵³	X ³¹	X ⁴⁶	X ⁶⁷	X ⁴¹	X ²⁷
	Witnessing violence	X ⁴²	X ⁵²	X ⁴⁵	X ³¹	X ⁴⁶	X ^{103,37}	X ⁸⁵	
	Psychological/mental health problems	X ⁴²	X ⁵²	X ⁵³		X ⁴⁶		X ⁴¹	X ²⁷
	Substance use	X ⁴²	X ⁵²	X ⁵³	X ³¹	X ⁴⁶	X ⁵⁸	X ⁴¹	X ²⁷

Wilkins, N., Tsao, B., Hertz, M., Davis, R., Klevens, J. (2014). *Connecting the Dots: An Overview of the Links Among Multiple Forms of Violence*. Atlanta, GA: National Center for Injury Prevention and Control, Centers for Disease Control and Prevention Oakland, CA: Prevention Institute.

CDC: Connecting the Dots

Links of Violence



		Type of Violence Perpetration							
		Child maltreatment	Teen Dating Violence	Intimate Partner Violence	Sexual Violence	Youth Violence	Bullying	Suicide	Elder Maltreatment
Risk Factors									
Societal	Cultural norms that support aggression toward others	X ^{33,76,77}	X ^{78,79}	X ⁵³	X ³¹	X ⁸⁰			X ^{27,81}
	Media Violence				X ^{57,82}	X ⁸³	X ²⁷	X ^{84,85}	
	Societal income inequity	X ¹⁰⁸		X ⁸⁶		X ^{87,88,89}	X ⁴⁷		
	Weak health, educational, economic, and social policies/laws	X ⁹⁰		X ⁵³	X ³¹			X ⁹¹	
	Harmful norms around masculinity and femininity	X ⁹²	X ⁵⁴	X ⁵³	X ^{31,73,74}	X ⁹³	X ⁹⁴		

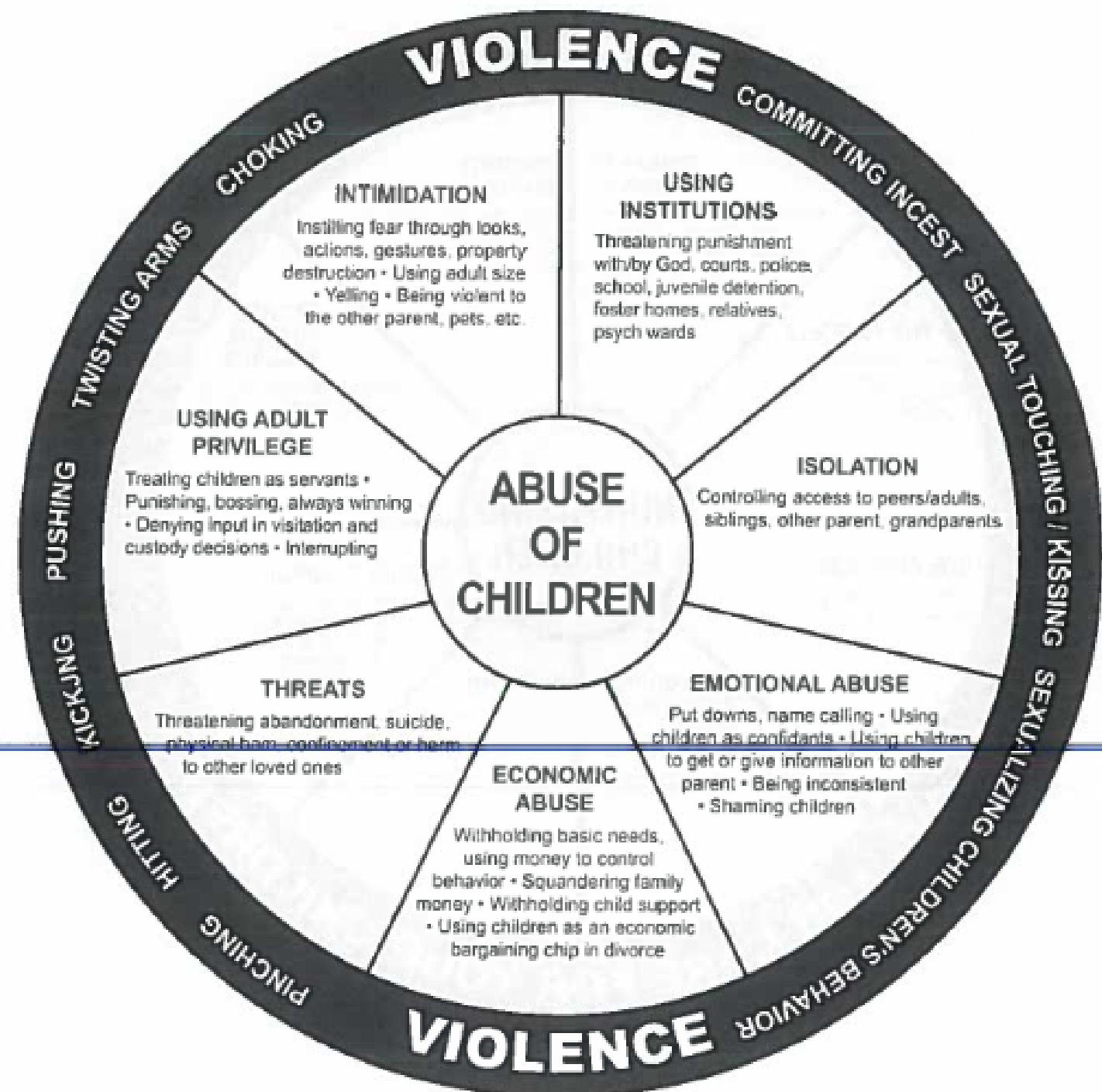
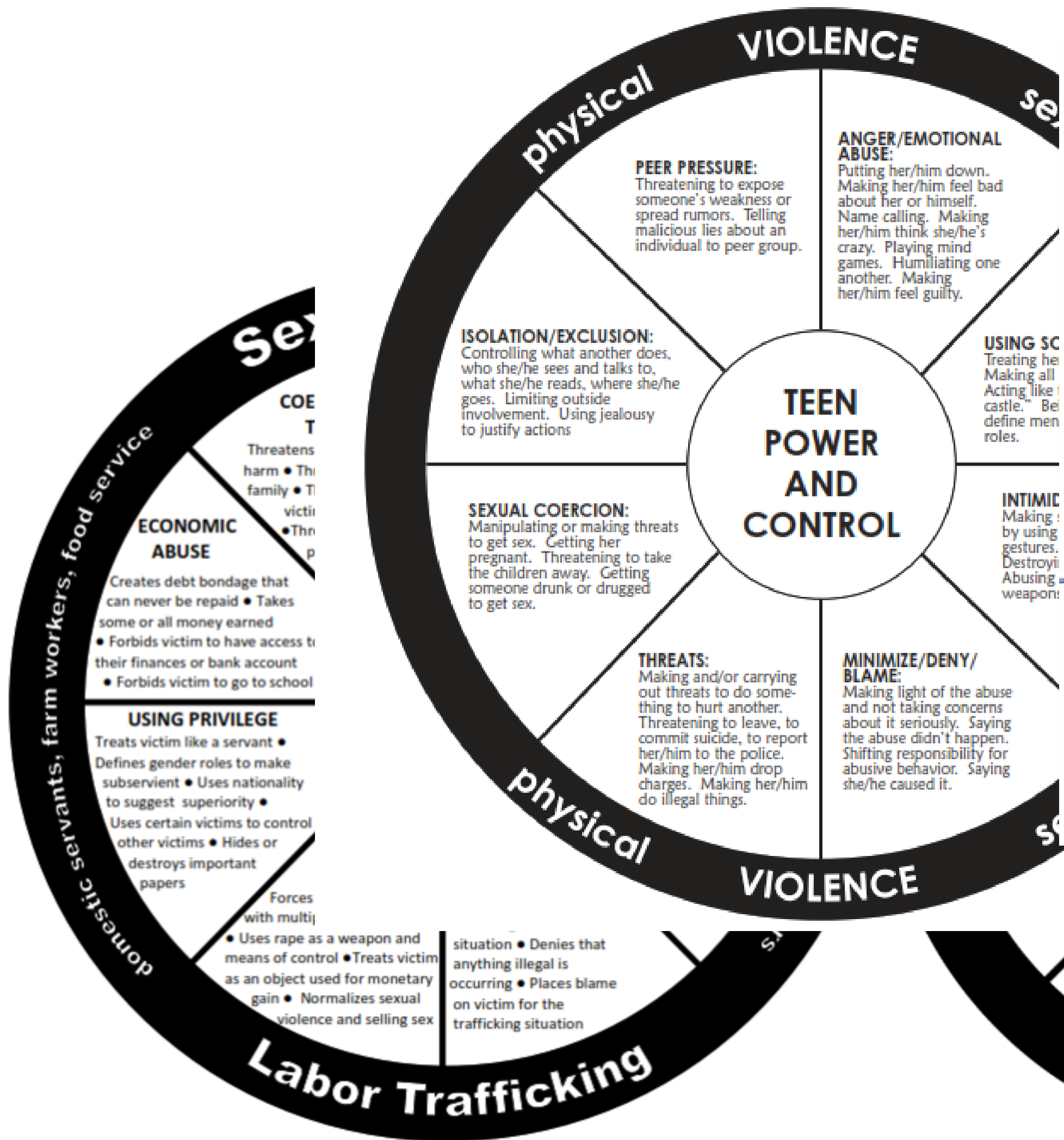
Wilkins, N., Tsao, B., Hertz, M., Davis, R., Klevens, J. (2014). *Connecting the Dots: An Overview of the Links Among Multiple Forms of Violence*. Atlanta, GA: National Center for Injury Prevention and Control, Centers for Disease Control and Prevention Oakland, CA: Prevention Institute.

Correlation of Abuse

Children who were exposed to violence in the home were

15X more likely to be physically and/or sexually assaulted than the national average.






Linkages of Domestic Violence & Sexual Assault Perpetration



- Researchers in Ohio found after looking at the Rape Backlog kit testing exam the criminal histories of 259 known perpetrators of sexual assault found that:
 - 12% of serial offenders had at least one reported domestic violence arrest prior to the sexual assault
 - 34% of them had a least one domestic violence arrest afterward

An aerial photograph of a rural landscape. The scene is dominated by vibrant green agricultural fields, likely corn, arranged in neat rows. A paved road runs horizontally across the middle of the image. To the left of the road, several power lines stretch diagonally across the frame. In the lower-left quadrant, there is a small cluster of trees and a patch of brown, rocky soil. The overall lighting is bright, suggesting a clear day.

**Increased understanding
of the intersections
of gender-based violence
and its impact on
homelessness**

Cindy's Intersections

Cindy became homeless when she left her roommate Greg after he **severely beat her**.

Then, he **coerces her into sleeping with other men for money**.

When she refused, **he would kick her out of their apartment**.

Is Cindy a victim Of **IPA/SA?HT?**

What in her story indicates HT?

What in her story indicates IPA?

What in her story indicates SA?

AMP Model

What was the action that her abuser used?

What is the means that her abuser used?

What was the Purpose that her abuser used?

Action

- Recruits
- Harbors
- Transports
- Provides
- Obtains or so attempts

Means

(Force, Fraud,
Coercion)

- Causing or threatening serious harm
- Physical restraint
- Debt bondage
- Abuse of legal process
- Withholding documents

Purpose

- Commercial sex acts
- Labor or Services

John's Intersections

John **broke up with Vincent.**

Vincent **claimed John was in debt** to him.

Then, he **coerced John into working** for his family business.

John hasn't been paid in 5 months.

Is John a victim Of **IPA/SA?HT?**

What in his story indicates HT?

What in his story indicates IPA?

What in his story indicates SA?

AMP Model

What was the action that his abuser used?

What is the means that his abuser used?

What was the Purpose that his abuser used?

Action

- Recruits
- Harbors
- Transports
- Provides
- Obtains or so attempts

Means

(Force, Fraud, Coercion)

- Causing or threatening serious harm
- Physical restraint
- Debt bondage
- Abuse of legal process
- Withholding documents

Purpose

- Commercial sex acts
- Labor or Services

51%

of women currently unhoused are accompanied by minors



41%

of them stated their homelessness was caused by violence.





36%

**of the unhoused women attribute
the of their homelessness due to
domestic violence**

54%

**of the unhoused women surveyed have
faced some form of violence, abuse,
harassment, or threats while
experiencing homelessness**



39%

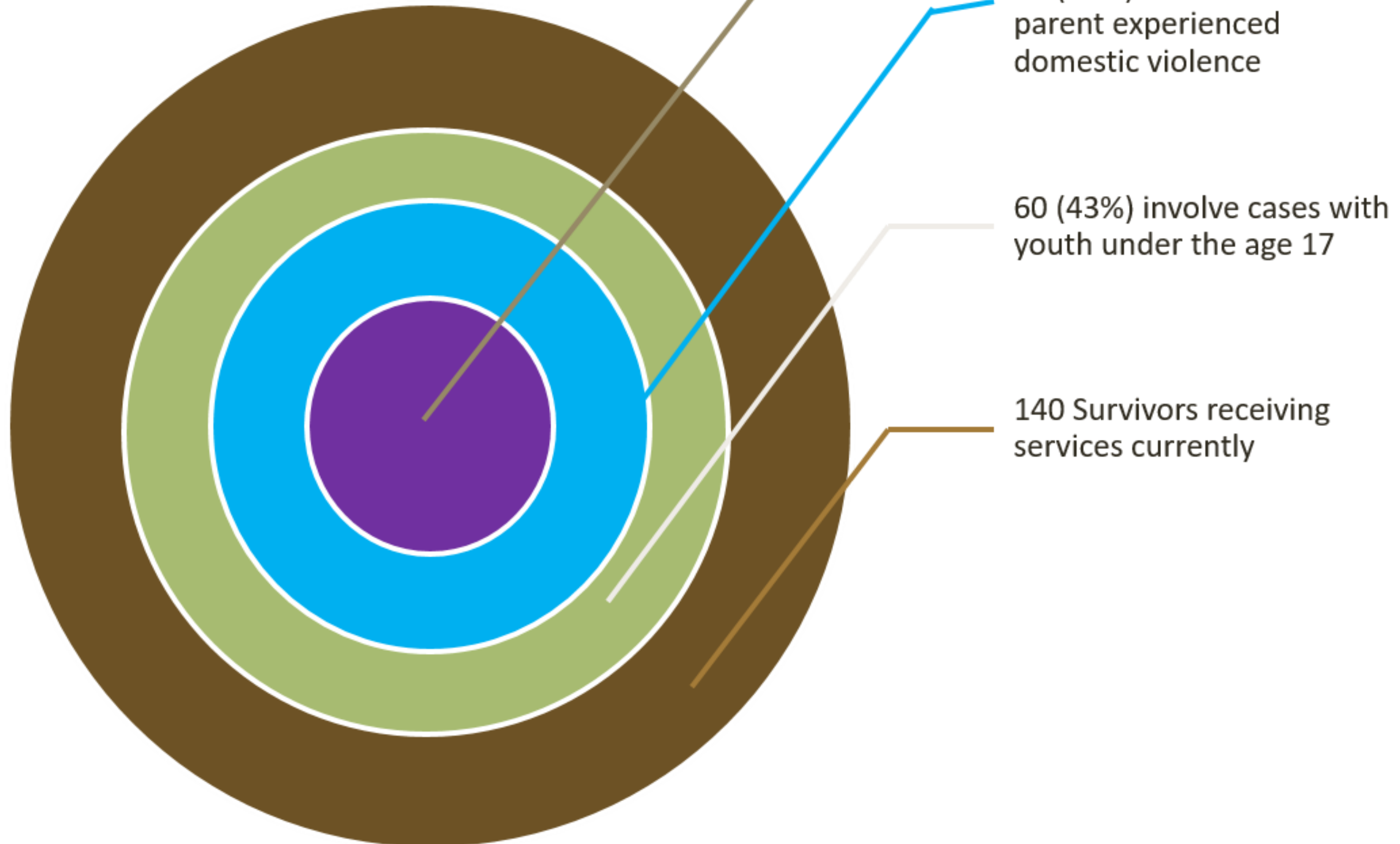
of women returned to an unsafe home because they had nowhere else to go



20%

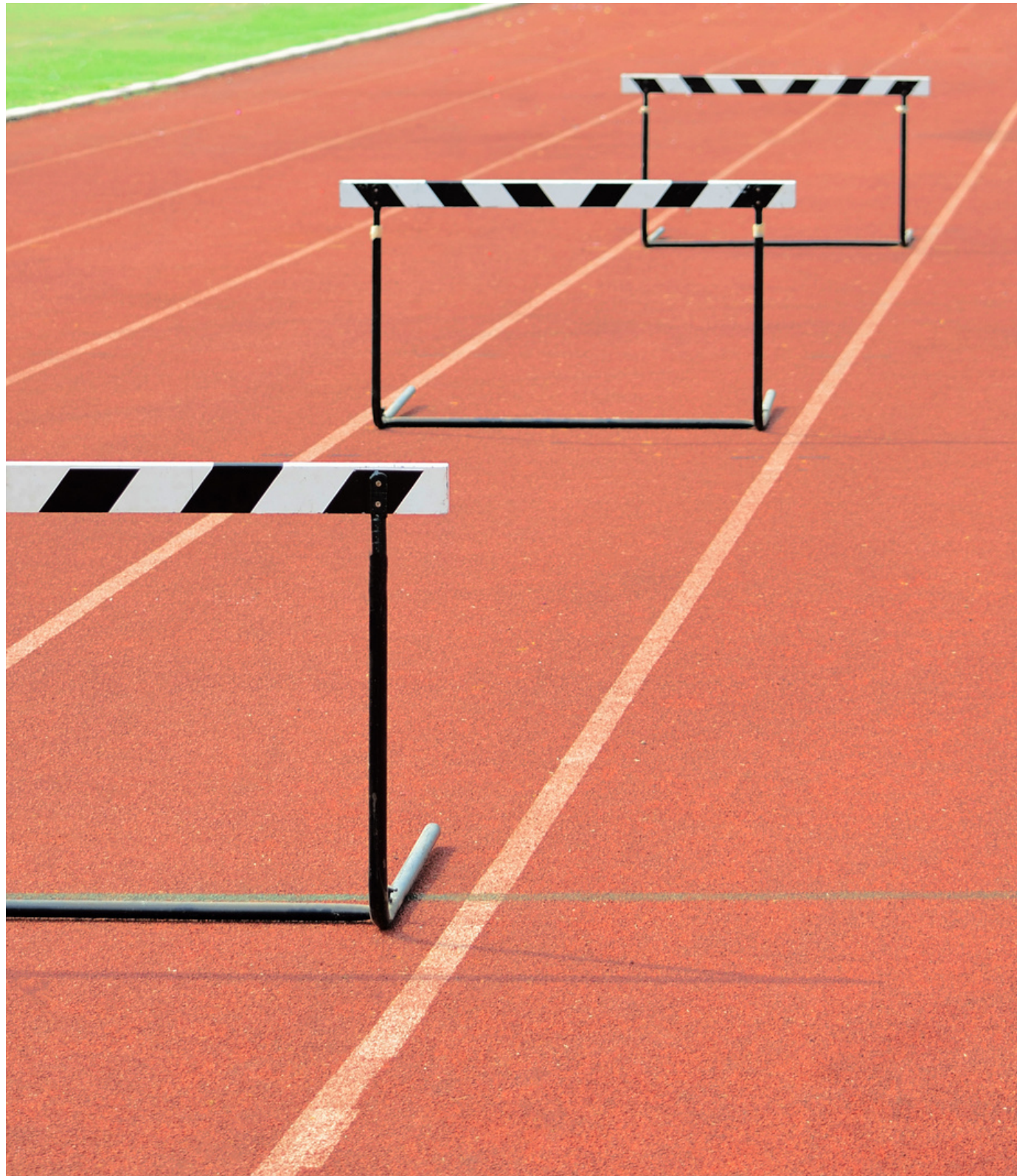
of unhoused women were pregnant while they were experiencing homelessness

Snapshot of Sexual Assault & Housing



**Barriers Survivors
Face when
Trying to Secure
Housing.**

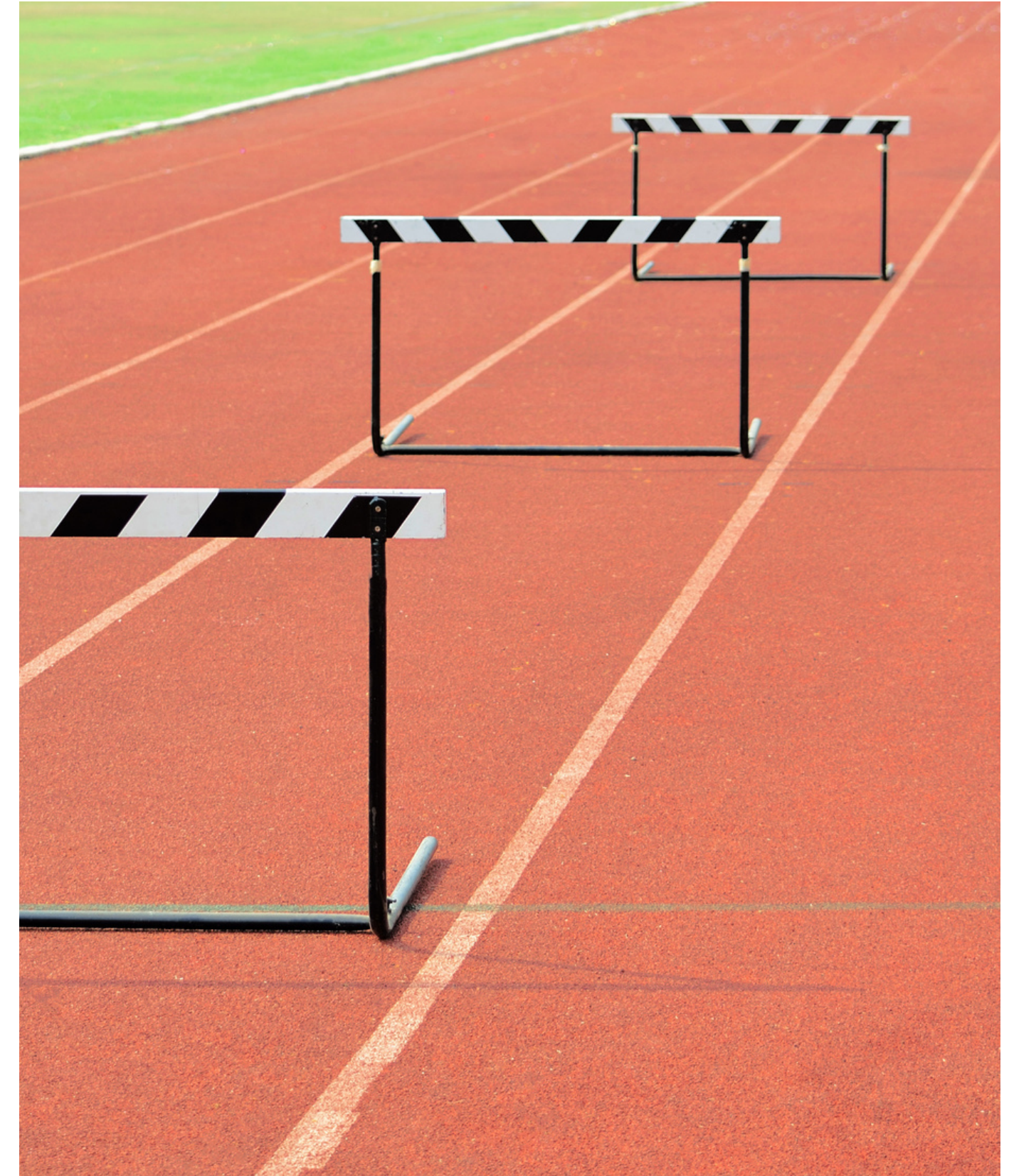
Barriers of Housing for GBV



- Prior to Covid many sexual assault survivors could only access 3-day emergency hoteling after fleeing homes with sexual assault
- If domestic violence was also present the family could then qualify into our domestic violence shelters
- With more families living in homes with multiple families we are seeing incidents of sexual violence that occurred among roommates

Barriers of Housing for GBV

- Many parents are tasked with trying to stabilize and find income:
 - Affordable daycare
 - Prior lack of natural support systems
 - Potential loss of familial support systems
 - Distrust of outside providers



Barriers of Housing for GBV

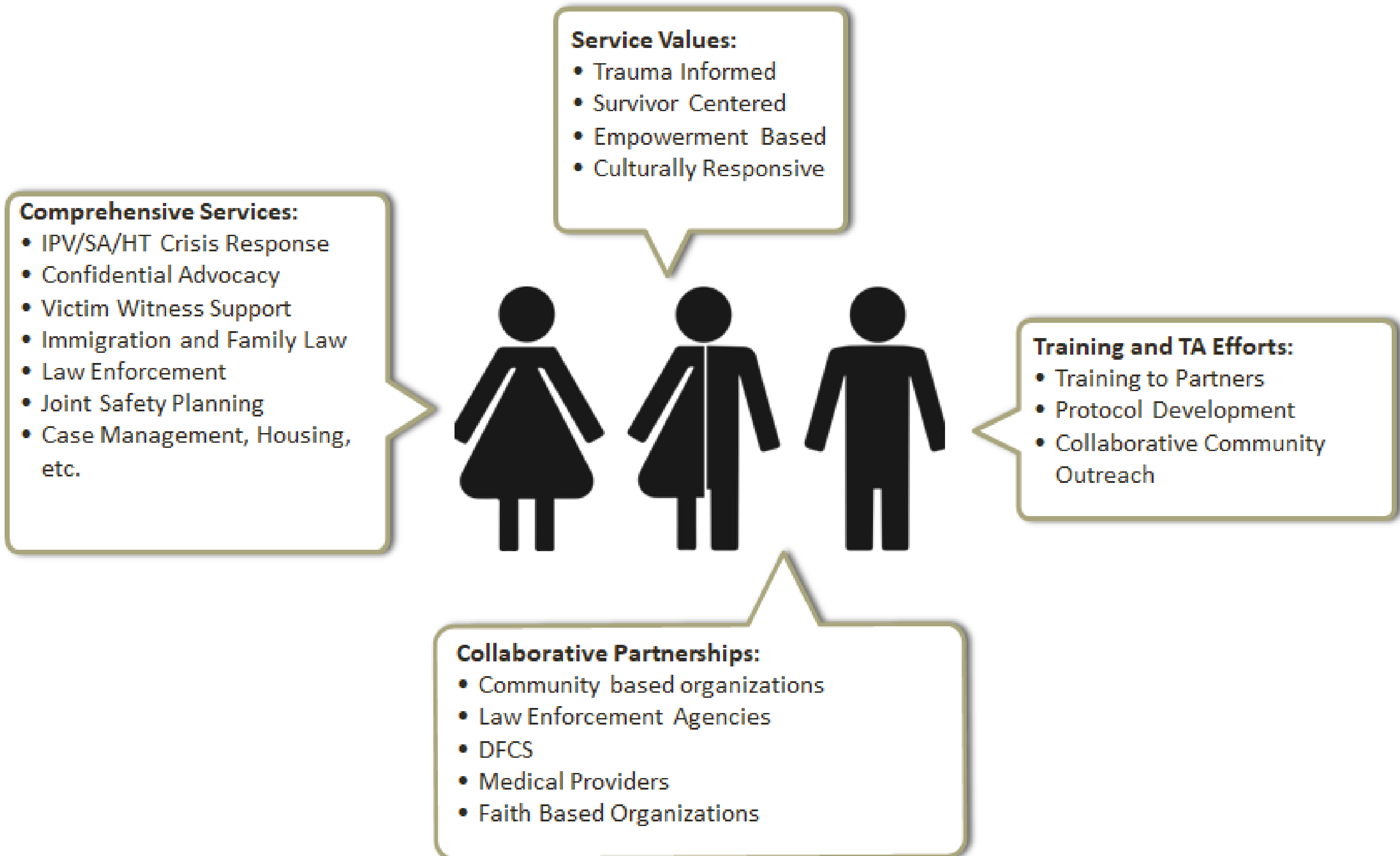


- Poor credit ruined rental histories
- Lack of steady employment
- Housing discrimination
- Loss of subsidized or other affordable housing

Inicios: Addressing Survivor Needs



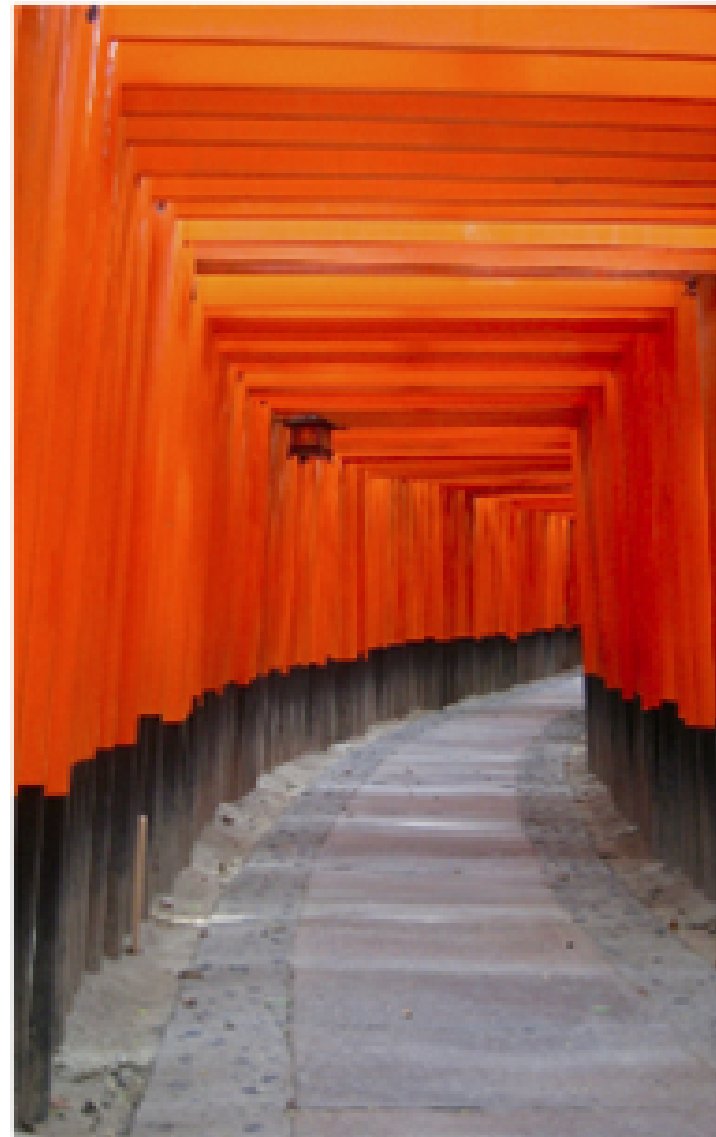
Comprehensive approach to gender-based violence



Intended collective Impact



Ensure a Continuum of Culturally Responsive Policies, Services and Support that Prioritizes Survivors' Wellbeing from Crisis to Long-Term Sustainability.



Crisis/Urgent

Establishing Basic Needs



Stabilization

Transitioning Towards
Self Sufficiency &
Economic Empowerment



Sustainability

Maintaining Permanent
Housing

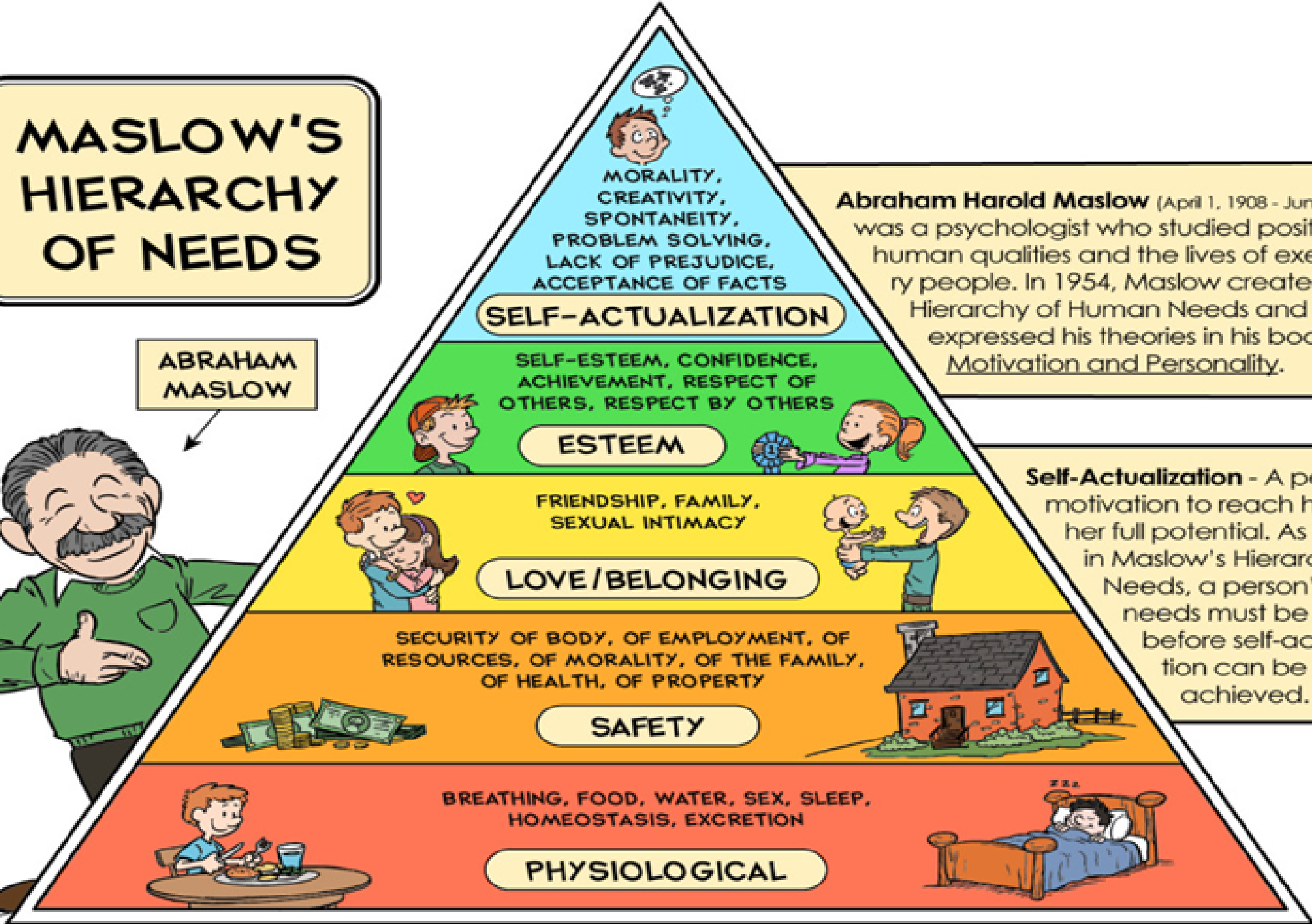


ADVOCACY FROM INICIOS (Beginnings) to Thriving!

**Self-sufficiency
and stabilization**

MASLOW'S HIERARCHY OF NEEDS

ABRAHAM MASLOW



Abraham Harold Maslow (April 1, 1908 - June 8, 1970) was a psychologist who studied positive human qualities and the lives of exemplary people. In 1954, Maslow created the Hierarchy of Human Needs and expressed his theories in his book, *Motivation and Personality*.

Self-Actualization - A person's motivation to reach his or her full potential. As shown in Maslow's Hierarchy of Needs, a person's basic needs must be met before self-actualization can be achieved.

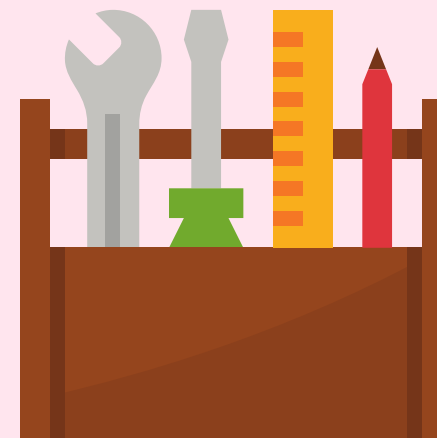
CRISIS/ENGAGEMENT PHASE

Focus

- Engagement
- Needs assessment
- Address needs
 - Basic needs: food, shelter, medical, mental health needs
- Safety needs
 - civil standby, lock changes, alarm, safety plan
- Legal Needs
 - TRO, custody, immigration, good cause report

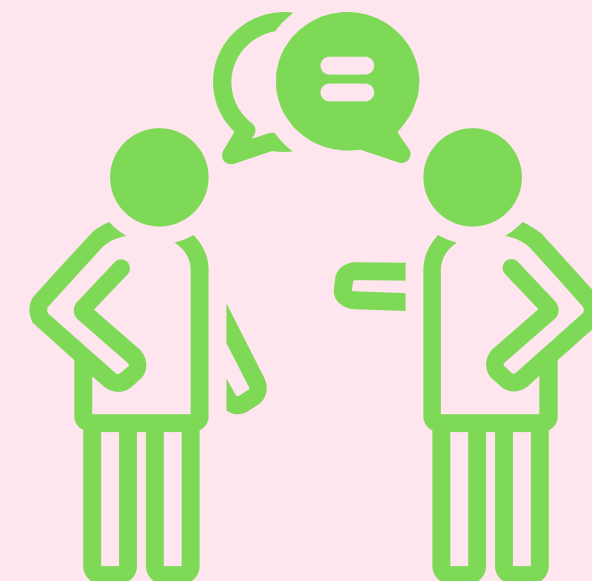
Tools

- Dr. Jacquelin Campbell's Danger Assessment
- Community Solutions Victim Needs Screening Tool
- Safety Plan
- Goal Plan
- Client Intake



Approaches

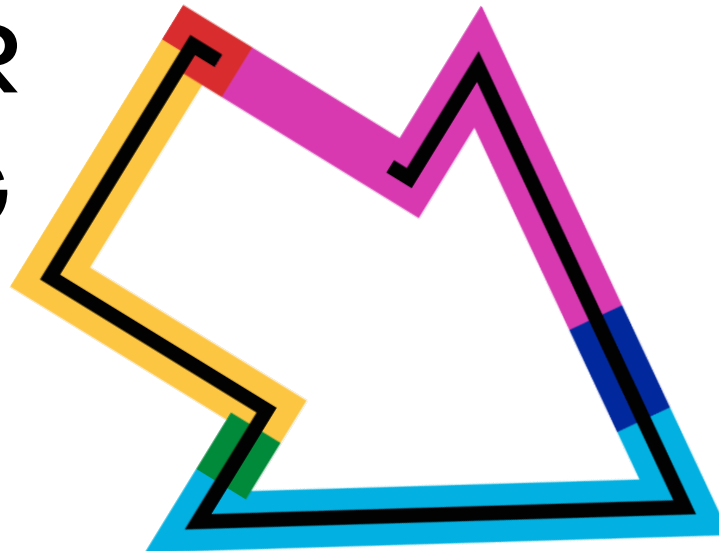
- Trauma-Informed
- Survivor-Centered
- Empowerment-based
- Culturally responsive
- Stages of Change
- Motivational Interviewing



HOUSING BARRIERS AND RECOMMENDATIONS FOR CRISIS PHASE

WHAT IS OFFERED:

- LIMITED EMERGENCY HOTEL
- LIMITED CONFIDENTIAL EMERGENCY SHELTER
- VISPDAT SCREENING



WHAT THE NEED IS/GAPS:

- LONGER TERM EMERGENCY HOUSING OPTIONS
- NOT A HOUSING FIRST MODEL
- VISPDAT DOES NOT PRIORITIZE HOUSING FOR GBV



**RECCOMENDATIONS FOR INCREASING ACCESS TO
EMERGENCY HOUSING FOR SURVIVORS:**

**INCREASE THE CAPACITY ACROSS THE HOUSING CONTINUUM
TO ENSURE SEAMLESS HOUSING AND COMPREHENSIVE CASE
MANAGEMENT SERVICES FOR GBV SURVIVORS FROM
CRISIS TO LONG-TERM HOUSING**

**SCREENING FOR EMERGENCY HOUSING VOUCHERS
SHOULD BE DONE BY CONFIDENTIAL GBV PROVIDERS**

**LOOK AT A GAPS ANALYSIS OF THE NEED FOR
EMERGENCY HOUSING OPTIONS FOR GBV**

TRANSITIONAL SUPPORT

LIFE COACHING + CASE MANGEMENT



STABILIZATION PHASE

Focus

- Increasing self confidence
- Increasing self-sufficiency
- Increasing English proficiency
- Improving emotional, mental, and physical health
- Increasing support networks
- Establish transitional housing
- Linkage to other resources, legal, etc.
- Advocacy and support with court systems and other partners

Tools

- Goal Plan
- Safety Plan
- Self-Sufficiency Matrix
- Pre-VISPDAT
- VI-SPDAT



Approaches

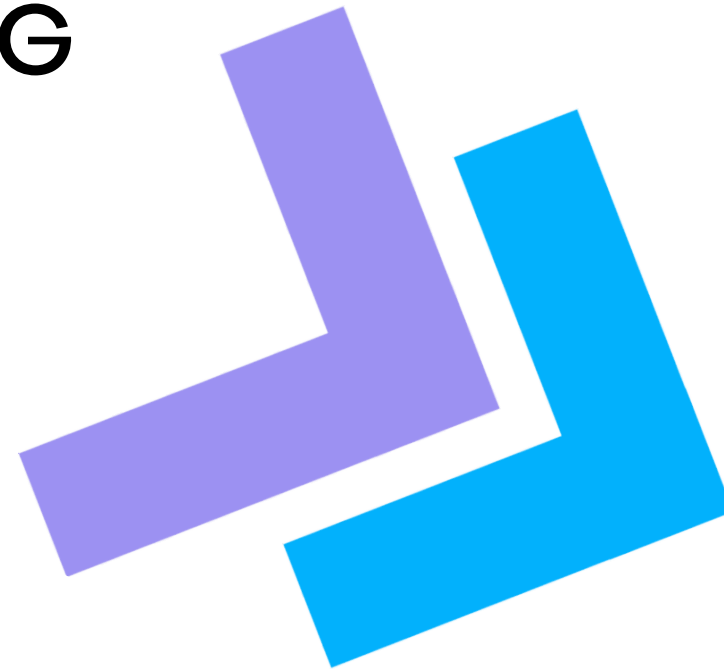
- Trauma-Informed
- Survivor-Centered
- Empowerment-based
- Culturally responsive
- Stages of Change
- Motivational Interviewing



HOUSING BARRIERS AND RECOMMENDATIONS FOR STABILIZATION

WHAT IS OFFERED:

- RAPID REHOUSING
- TRANSITIONAL HOUSING
(EL JARDINS)
- CALOES HOUSING



WHAT THE NEED IS/GAPS:

- MORE BEDS AND SPACES
- LACK OF PREFERENCE
GUIDELINES FOR GBV AT
AFFORDABLE HOUSING COMPLEXES

RECCOMENDATIONS FOR INCREASING ACCESS TO
STABILIZATION HOUSING FOR SURVIVORS:



**FLEXIBILITY TO ALLOW CONFIDENTIAL GBV PROVIDERS TO
ASSESS SURVIVORS ENTRY INTO HOUSING POINTS**

**ESTABLISH PARTNERSHIPS WITH CITIES AND AFFORDABLE
HOUSING DEVELOPERS TO CREATE PREFERENCE GUIDELINES
TO INCREASE HOUSING OPPORTUNITIES FOR GBV SURVIVORS**

SUSTAINABILITY

A red arrow-shaped sign with a silver border pointing to the right, mounted on a grey post. The word "EMPOWERMENT" is written in large, white, bold, sans-serif capital letters with a black outline on a red background.

EMPOWERMENT

EMPOWERMENT/SELF-SUFFICIENCY

Housing stability

Economic Stability

Established supportive systems

Utilization of gained skills

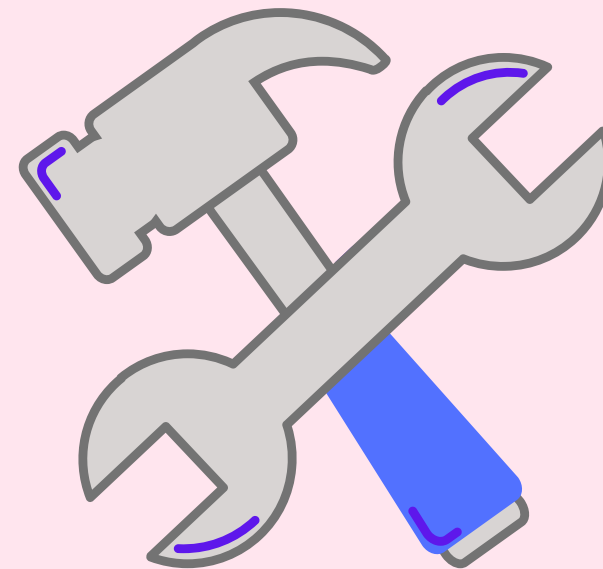
SUSTAINABILITY PHASE

Focus

- Survivor has permanent housing
- Survivor has steady income
- Survivor has means to cover basic needs consistently
- Survivor has reliable transportation, childcare, etc.
- Survivor has access to continued mental health and medical care
- Survivor has ability to pursue academic and professional goals

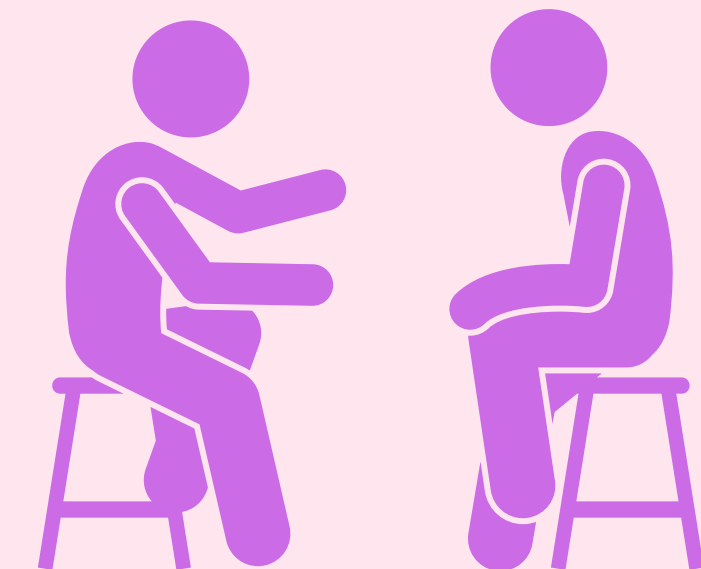
Tools

- Goal Plan
- Safety Plan
- Self-Sufficiency Matrix



Approaches

- Trauma-Informed
- Survivor-Centered
- Empowerment-based
- Culturally responsive
- Stages of Change
- Motivational Interviewing



HOUSING BARRIERS AND RECOMMENDATIONS FOR PERMANENT HOUSING

WHAT IS OFFERED:

- LIMITED SELF-SUFFICIENCY PROGRAMMING
- CASE MANAGEMENT SUPPORT



WHAT THE NEED IS/GAPS:

- NO TRAJECTORY TO PERMANENT HOUSING OPPORTUNITIES
- LACK OF PERMANENT HOUSING OPPORTUNITIES
- LACK OF PREFERENCE GUIDELINES FOR GBV AT AFFORDABLE HOUSING COMPLEXES



**RECCOMENDATIONS FOR INCREASING ACCESS TO
PERMANENT HOUSING FOR SURVIVORS:**

**INCREASE THE CAPACITY ACROSS THE HOUSING CONTINUUM
TO ENSURE SEAMLESS HOUSING AND COMPREHNSIVE CASE
MANAGEMENT SERVICES FOR GBV SURVIVORS FROM
CRISIS TO LONG-TERM HOUSING**

**INCREASE NETWORK FOR PARTICIPATING LANDLORDS
WITH HOUSING PROGRAMS**

**ESTABLISH PARTNERSHIPS WITH CITIES AND AFFORDABLE
HOUSING DEVELOPERS TO CREATE PREFERENCE GUIDELINES
TO INCREASE HOUSING OPPORTUNITIES FOR GBV SURVIVORS**





Solutions to Violence Walk-In Services

16264 Church Street, Morgan Hill, CA 95037

341 Tres Pinos Road, Suite 202 b, Hollister, CA 95023

Monday - Friday 9:00 am - 5:00 pm

Family Justice Center- South County

16264 Church Street, Morgan Hill, CA 95037

Wednesdays 9:00am - 5:00pm

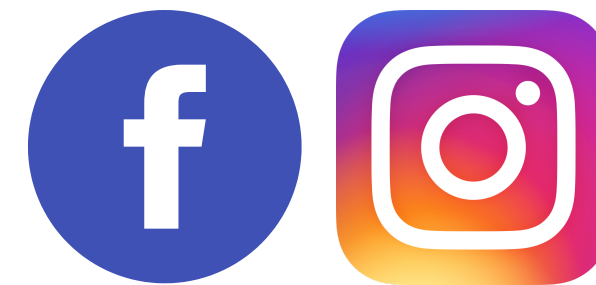
San Benito County Youth Drop-In Center

544 San Benito Street, Hollister, CA 95023

Monday- Wednesdays 3:00 PM to 7:00 PM

SafeChat

www.safechatsv.org



@communitysolutionsSTV



24 Hour Crisis Hotline (877) 363-7238

www.communitysolutions.org

Making a Difference in Our Communities



- Gilroy & Hollister Innovators: youth and adult volunteers creating safer communities through community-led actions
- Promotores: Spanish speaking volunteers who empower their community through education
- School-based prevention programs
- San Benito County Youth Drop-In Center
- Parent Workshops
- Survivor Leadership Opportunities
- Awareness Building Campaigns
- Professional Trainings
- Volunteer Advocate training

