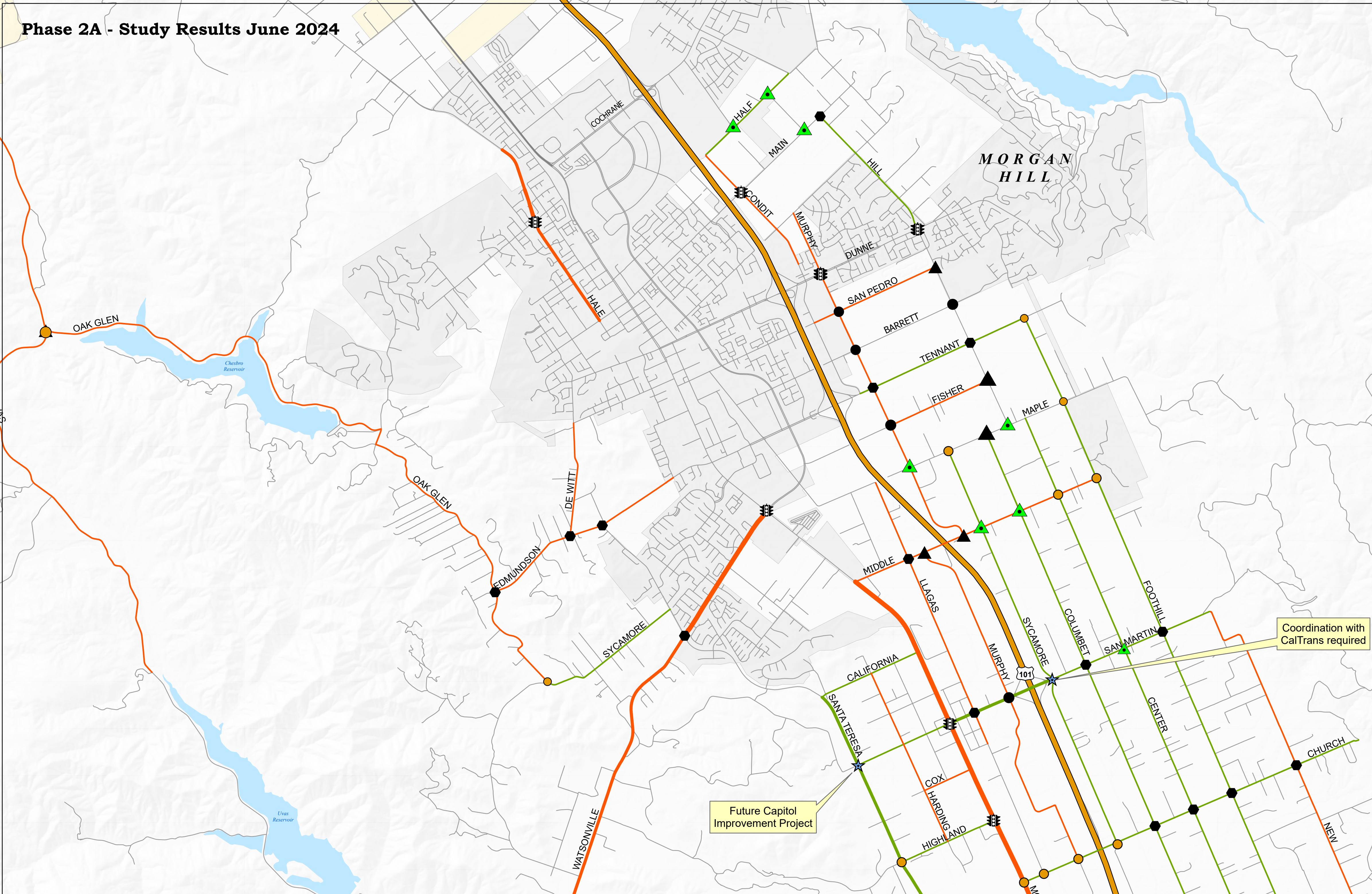




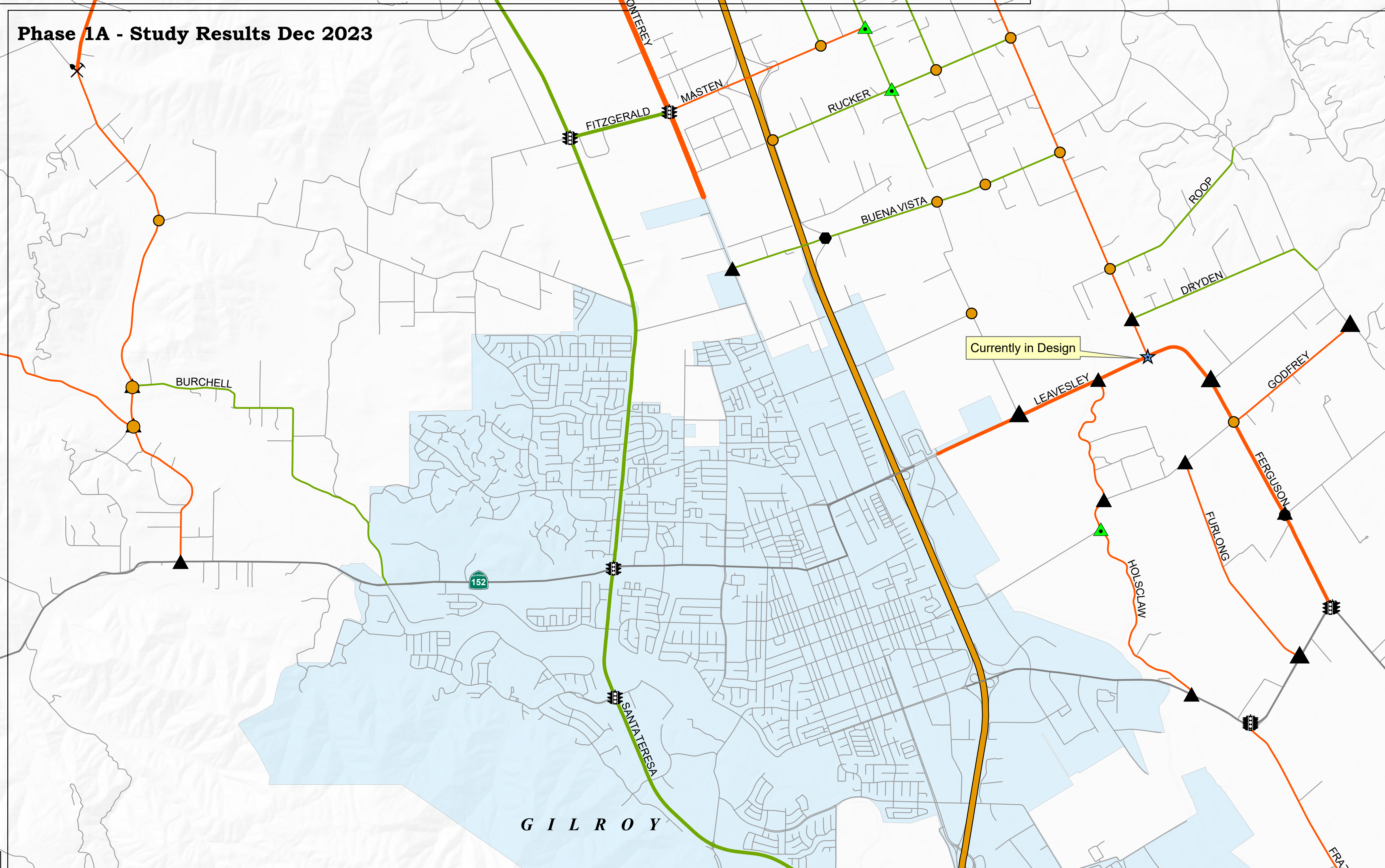
County of Santa Clara Roads & Airports



Phase 2A - Study Results June 2024



Phase 1A - Study Results Dec 2023



Legend

- Status**
- ▲ All Way Stop Control Installed Phases 1-3 Completed (2019-20)
- All Way Stop Warrant Study (In-Progress) Phase 1A-2A
- ★ Signals Warranted
- ✂ Future Capitol Improvement Project
- ⊠ Existing Signals
- Existing Stop Controls**
- All Way
- 2 Way
- ▲ 1 Way
- Speed Studies in Progress Average Daily Traffic (Final Results Available 6/2024)**
- 150 - 5973
- 5974 - 11797
- 11798 - 17620
- Speed Studies Validated Average Daily Traffic (2019)**
- 150 - 5973
- 5974 - 11797
- 11798 - 17620
- State Highway
- All Other Roads