

Santa Clara County Mental Health Department

**Santa Clara County
Preliminary Executive Summary
2009-2012 Suicide Data**

November 8, 2013

Summary of 2009-2012 Santa Clara County Suicide Data

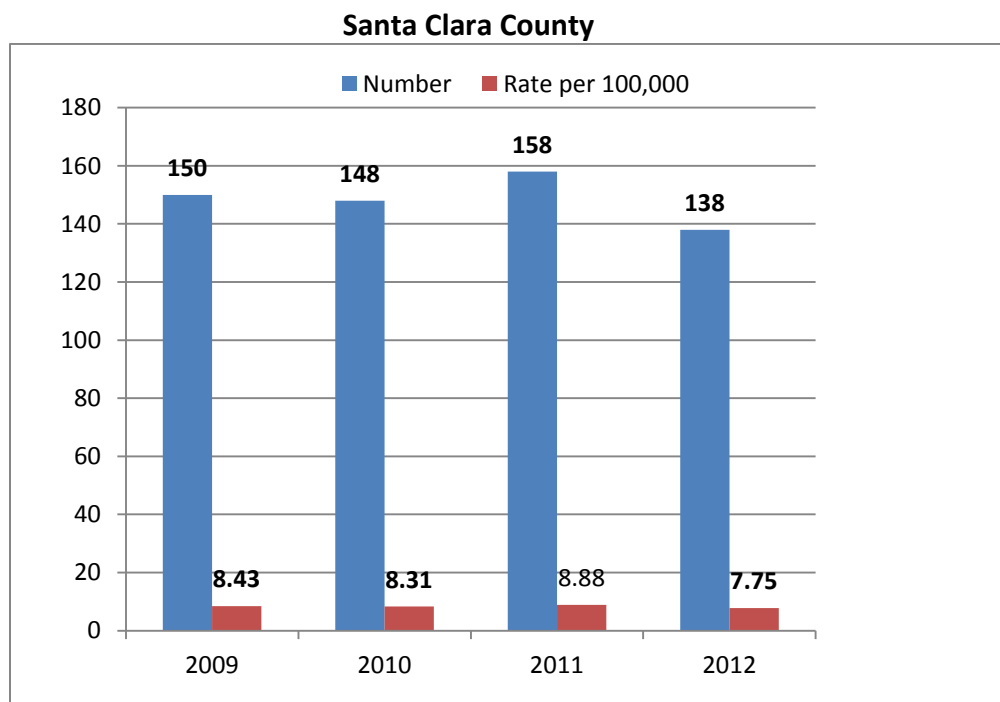
Santa Clara County (SCC) is home to more than 1.78 million people who live in 15 cities and unincorporated areas. SCC is the largest member of the economic region called Silicon Valley and is a world leader in development of new technologies and industries. SCC cities are frequently ranked among the highest in the nation in overall health and safety. However, SCC is faced with the fact that 10% of SCC deaths are the result of someone taking their own life.

This report provides baseline information of completed suicides in Santa Clara County. The information contained in this report is essential in identifying the needs and developing effective suicide intervention and prevention strategies. This data helps the Suicide Prevention Initiative to ask the right questions and guide the community wide efforts. Further, the report offers a foundation to evaluate the Suicide Prevention program effectiveness in attaining the initiative's primary goals: decrease the number of suicide deaths by 40% among adults, and 50% in youth by 2021.

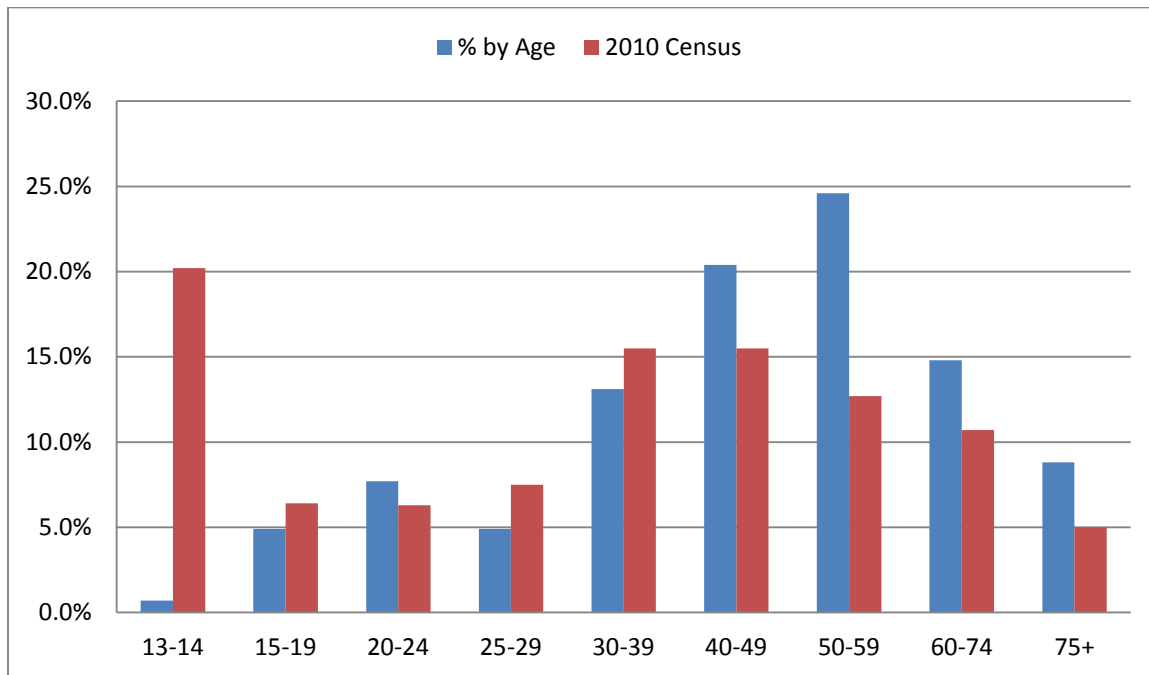
What follows is information on suicides in SCC 2009-2012 based on factors such as age, gender, place of death, and means employed. The report highlights different demographic variables and provides data for each one.

Overview

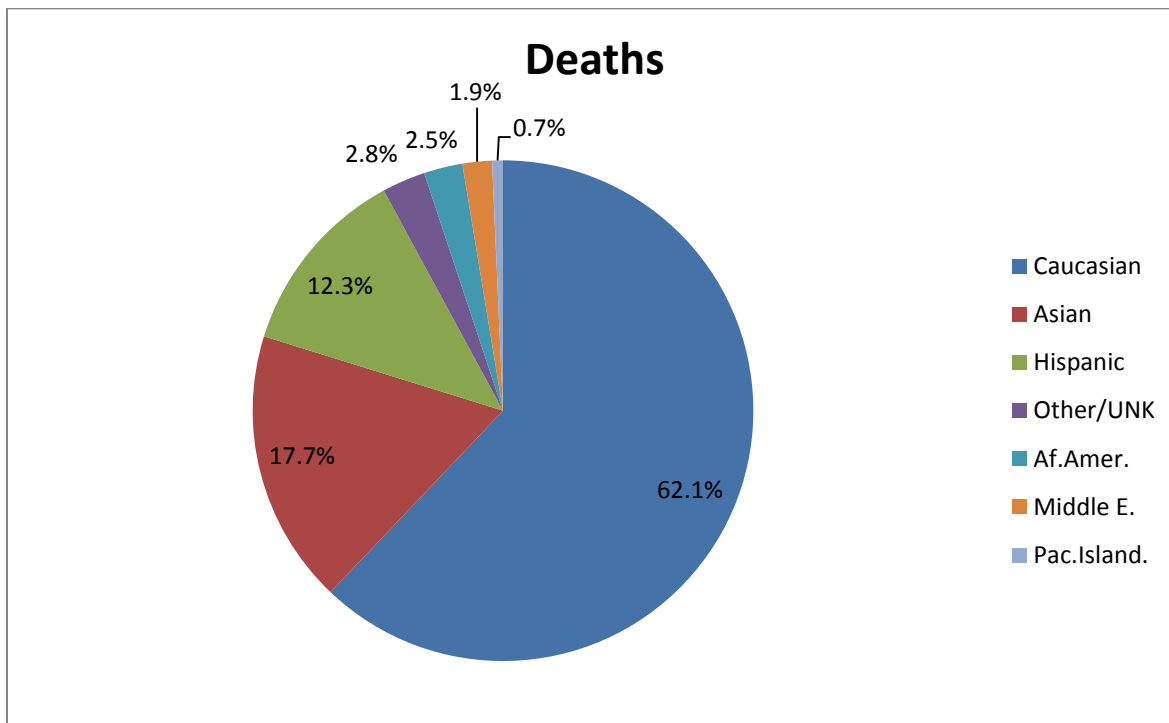
For comparison, in 2009 the rate of suicides per 100,000 was 8.43 for Santa Clara County, 10.3 for California, and 12.0 for the United States. Below are 2009-2012 rates for Santa Clara County.



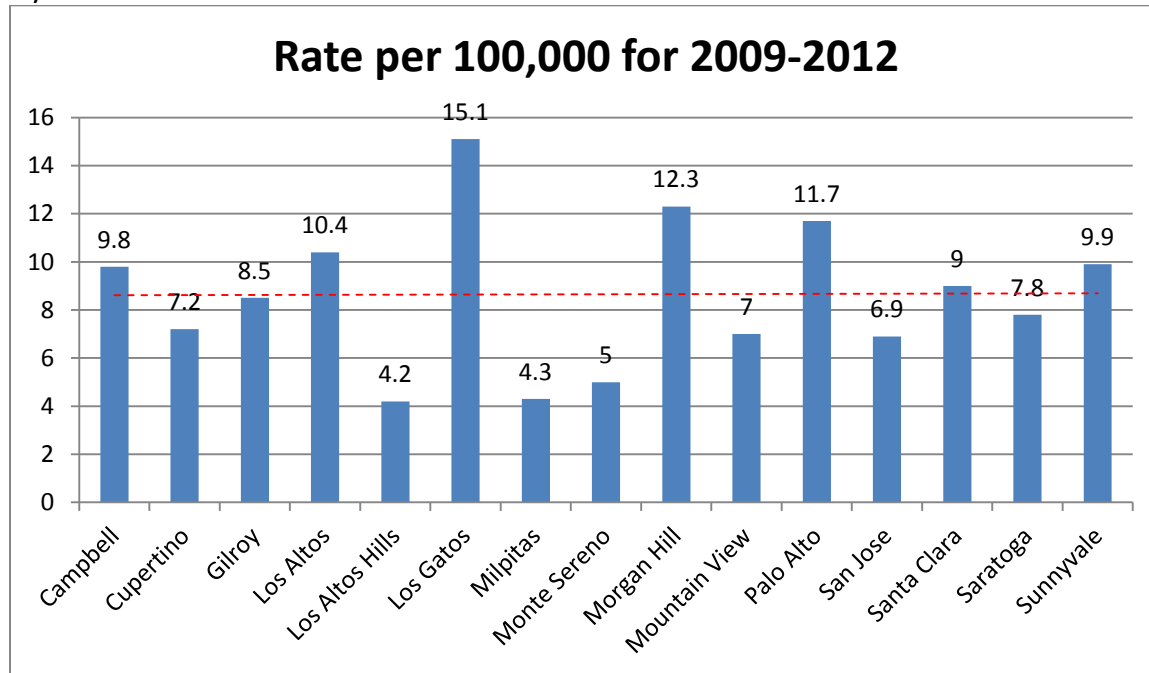
AGE. The youngest deaths were two 13 year old girls, with the oldest being a 96 year old male. The highest risk group by age is 50-59. This group is 12.7% of the population, and has 24.6% of all suicides for 2009-2012.



ETHNICITY. The highest rate of suicide by race/ethnicity is Caucasian, with 62.1% of all suicides, and being 35% of the county population. The second highest is the Asian population with 17.7%, followed by the Hispanic population with 12.3% of the suicides.



PLACE OF RESIDENCE. 8.6 deaths per 100,000 is the baseline for city comparisons. Los Altos Hills has the lowest rate of 4.2, and Los Gatos is the highest with a rate of 15.1 per 100,000. It is premature to attempt to draw conclusions on the disparity of the rates between cities with only 4 years of data.



MEANS. Santa Clara County is very different from the rest of the United States in regards to means used by someone taking their life. 51% of suicides in the United States are completed by use of a firearm. In SCC, 30.8% of suicides are completed using a firearm, and 30.8% are by hanging.

MEANS	2009	2010	2011	2012	TOTAL	%
Asphyxiation	8	6	9	2	25	4.2%
Helium	0	7	2	3	12	2%
Cutting/Stab	5	3	7	5	20	3.7%
Drowning	3	2	0	1	6	1%
Drug/Poison	20	25	36	27	108	18.2%
Firearm	55	40	47	41	183	30.8%
Hanging	42	48	43	50	183	30.8%
Immolation	3	1	1	1	6	1%
Jumping	4	9	2	0	15	2.5%
Train	7	3	9	6	25	4.2%
Other	3	4	2	2	11	1.9%
TOTAL	150	148	158	138	594	100%

LOCATION. 63% of all SCC deaths occur in or around their place of residence.

PLACE OF DEATH	NUMBER	%
Home Bedroom	133	22.4%
Home Garage	54	9.1%
Home Inside	131	22.1%
Home Outside	56	9.4%
Car	26	4.4%
Hotel/Motel	31	5.2%
Train Tracks	25	4.2%
Park/Trail	28	4.7%
Relative/Friend Home	17	2.9%
Work	7	1.2%
Hospital/Nursing Home	7	1.2%
Jail	7	1.2%
Other Public Location	59	9.9%
Unknown	13	2.2%

MENTAL HEALTH CONDITION. In 39% of the cases, it is unknown if there was a mental health condition. However, in almost 38% of the cases clinical depression was listed as a mental health condition that was present at the time of death.

